	SURFACE VEHICLE RECOMMENDED PRACTICE	SAE J1647	REV. SEP2007
		Issued 1995-03 Revised 2007-09	
		Superseding J1647 MAR1995	
Plastic Materials and Coatings for Use In or On Optical Parts Such as Lenses and Reflectors of High-Intensity Discharge Forward Lighting Devices Used in Motor Vehicles			

RATIONALE

This document was reviewed and no requirements were added, deleted or changed.

The references were updated to versions current in September 2006. Also, added was a reference to SAE J2009, "Discharge Forward Lighting System and Subsystems."

A requirement that a new light source be used for each test has been added.

1. SCOPE

This SAE Recommended Practice provides test methods and requirements to evaluate the suitability of plastic optical materials for possible use in discharge forward lighting (DFL) devices in motor vehicles. These materials are typically used for lenses and reflectors.

Separate testing is required for each combination of material, industrial coating, DFL light source, and device focal length. The tests are intended to determine physical and optical characteristics of the materials and coatings. Performance expectations of finished assemblies, including plastic components, are to be based on tests for lighting devices, as specified in SAE Standards and Recommended Practices for motor vehicle lighting equipment. Optical components exposed to weathering should also be subject to SAE J576.

2. REFERENCES

2.1 Applicable Publications

The following publications form a part of this specification to the extent specified herein. Unless otherwise specified, the latest issue of SAE publications shall apply.

2.1.1 SAE Publications

Available from SAE, 400 Commonwealth Drive, Warrendale, PA 15096-0001, Tel: 877-606-7323 (inside USA and Canada) or 724-776-4970 (outside USA), www.sae.org.

SAE J576	Plastic Material or Materials for Use in Optical Parts Such as Lenses and Reflex Reflectors of Motor Vehicle Lighting Devices
SAE J578	Color Specification
SAE J2009	Discharge Forward Lighting System and Subsystems

SAE Technical Standards Board Rules provide that: "This report is published by SAE to advance the state of technical and engineering sciences. The use of this report is entirely voluntary, and its applicability and suitability for any particular use, including any patent infringement arising therefrom, is the sole responsibility of the user."

SAE reviews each technical report at least every five years at which time it may be reaffirmed, revised, or cancelled. SAE invites your written comments and suggestions.

Copyright © 2007 SAE International

All rights reserved. No part of this publication may be reproduced, stored in a retrieval system or transmitted, in any form or by any means, electronic, mechanical, photocopying, recording, or otherwise, without the prior written permission of SAE.

TO PLACE A DOCUMENT ORDER: Tel: 877-606-7323 (inside USA and Canada)
 Tel: 724-776-4970 (outside USA)
 Fax: 724-776-0790
 Email: CustomerService@sae.org

SAE WEB ADDRESS:

<http://www.sae.org>

2.1.2 ASTM Publications

Available from ASTM, 100 Barr Harbor Drive, West Conshohocken, PA 19428-2959, Tel: 610-832-9585, www.astm.org.

ASTM D 1003-00 Standard Test Method for Haze and Luminous Transmittance of Transparent Plastics

ASTM E 308-01 Standard Practice for Computing the Colors of Objects by Using the CIE System

2.1.3 CIE Publication

Available from CIE Central Bureau, Kegelgasse 27, A-1030 Wien, Austria, Tel: +43-1-714-31-87-0, www.cie.co.at/framepublications.html.

CIE 1931 System

2.1.4 ISBN Publication

Available from ACGIH, 6500 Glenway Ave., Bldg. D-7, Cincinnati, OH 45211-4438.

ISBN:0936712-81-3 The Threshold Limit Values for Occupational Exposure to Ultraviolet Radiation Incident Upon Skin or Eye

3. DEFINITIONS

3.1 Material

A type and grade of plastic, distinguished by its composition, manufacturer's designation (number), and color.

3.2 Coated Material

A coated material is a material as defined in 3.1 which has a coating applied to the surface of the finished sample to impart some protective properties. Coating identification includes manufacturer's name, formulation designation (number), and recommendations for application.

3.3 Apparatus

3.3.1 High-intensity Discharge Lamp

A sealed light source that produces light flux by means of an electrical discharge.

3.3.2 Discharge Forward Lighting (DFL) Systems

A lighting system providing forward illumination, comprised of the light discharge source, ballast/ starting system, and interconnecting wiring.

3.3.3 Test Chamber

An aluminum box that provides an alternative to DFL system testing of materials. It is intended to simulate UV intensity and thermal conditions within a DFL device. Refer to Figure 1.

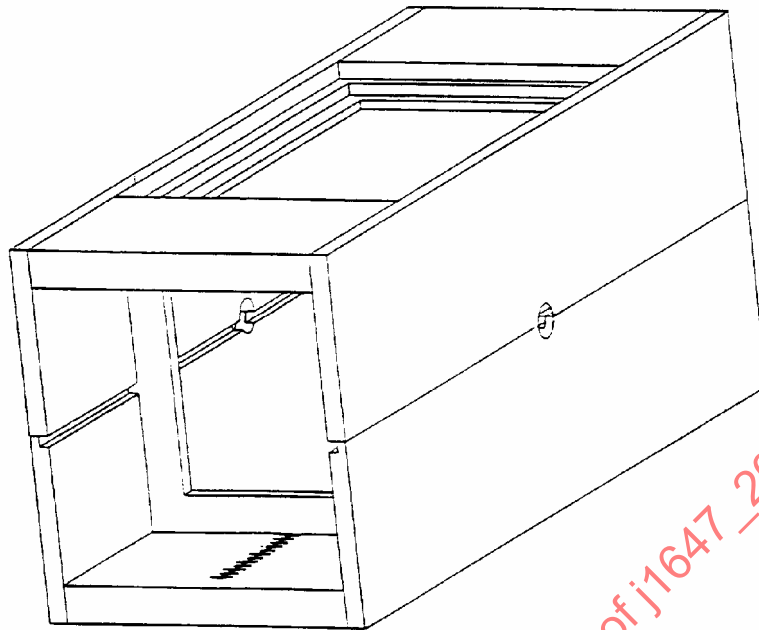


FIGURE 1 - SAE HID TEST CHAMBER - ASSEMBLED - FULL SCALE

3.3.3.1 Test Chamber Design

The test chamber design is given in Figures 2, 3, 4, and 5. The ability of the chamber to simulate device environments is limited to distances "d" of 44 to 64 mm. It is made of clear anodized 3.2 mm thick aluminum. The assembled test chamber is tight fitting, but not hermetically sealed. The lamp is mounted in compliance with the manufacturer's recommendations and positioned so that the arc discharge coincides with the geometric center of the test chamber. Sample holders are placed a distance "d" from center, on opposite sides of the lamp. The distance "d" determines the UV intensity at the sample. It is nominally twice the focal length of the intended DFL system. There are two sample holders. One sample holder contains PYREX and the other contains the material to be tested. A 38 mm x 76 mm PYREX window is built into the top of the test chamber to allow the escape of excess thermal radiation. For $d < 50$ mm, the window should be covered with an aluminum plate. Thermal equilibrium is reached in an open air environment.

At its discretion, the manufacturer may perform the recommended tests using the actual DFL system rather than the test chamber.

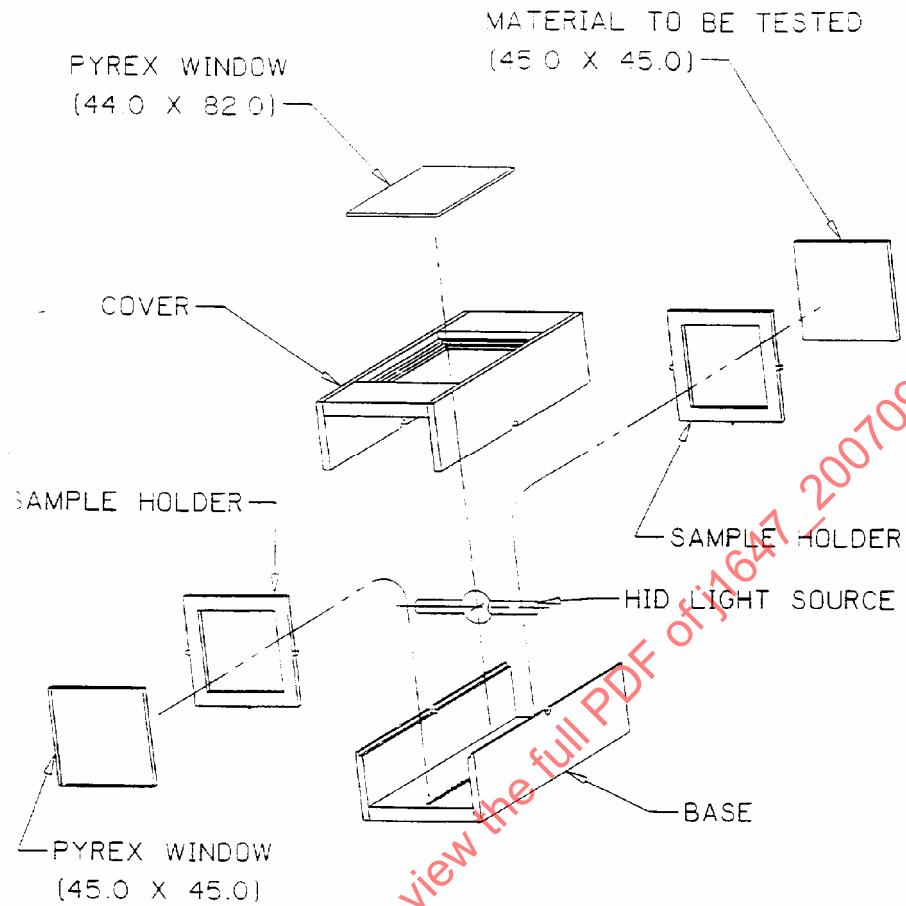


FIGURE 2 - SAE HID TEST CHAMBER - PERSPECTIVE - 1/2 SCALE

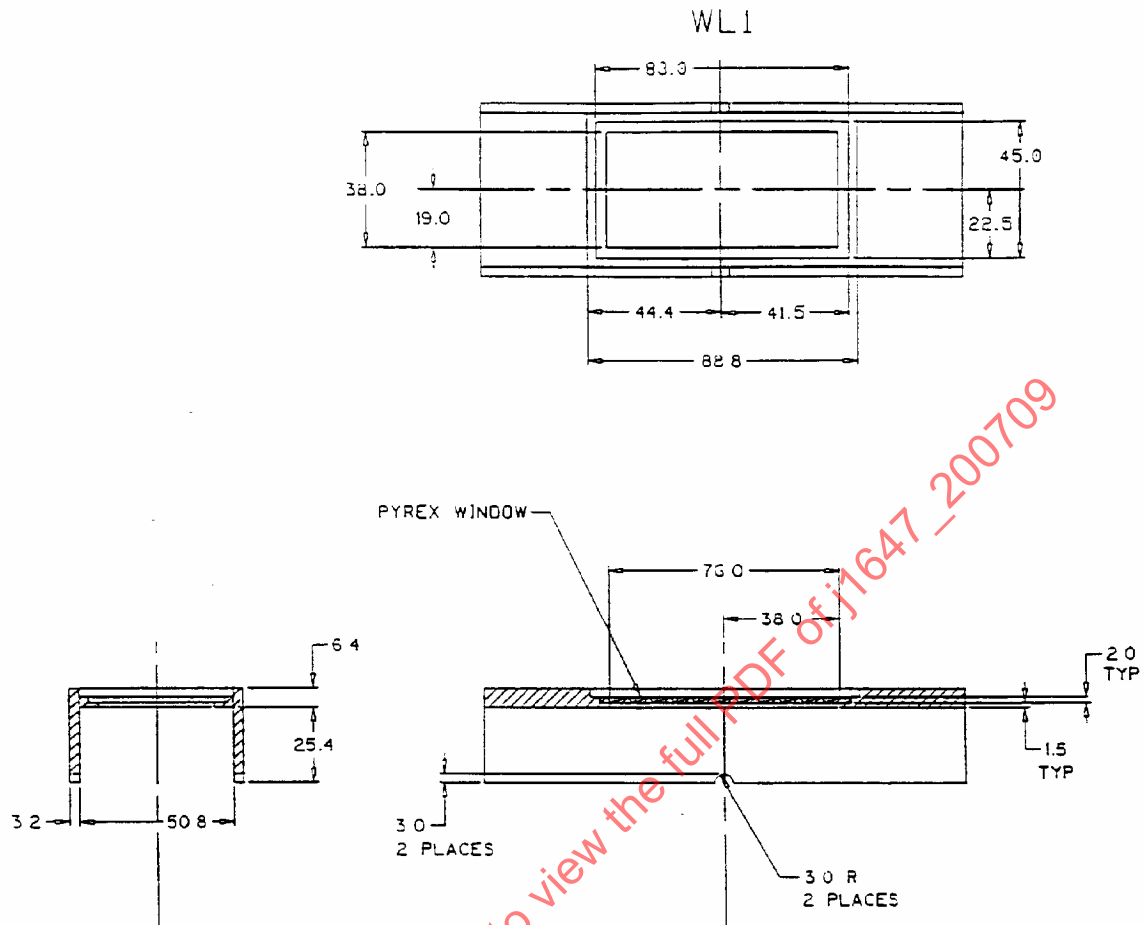


FIGURE 3 - SAE HID TEST CHAMBER - COVER

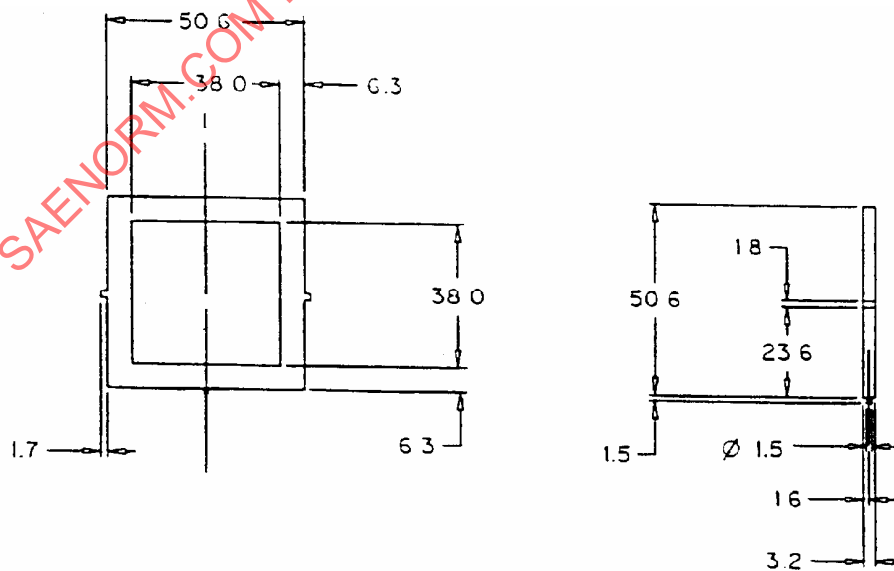


FIGURE 4 - SAE HID TEST CHAMBER - SAMPLE HOLDER - 2 REQUIRED

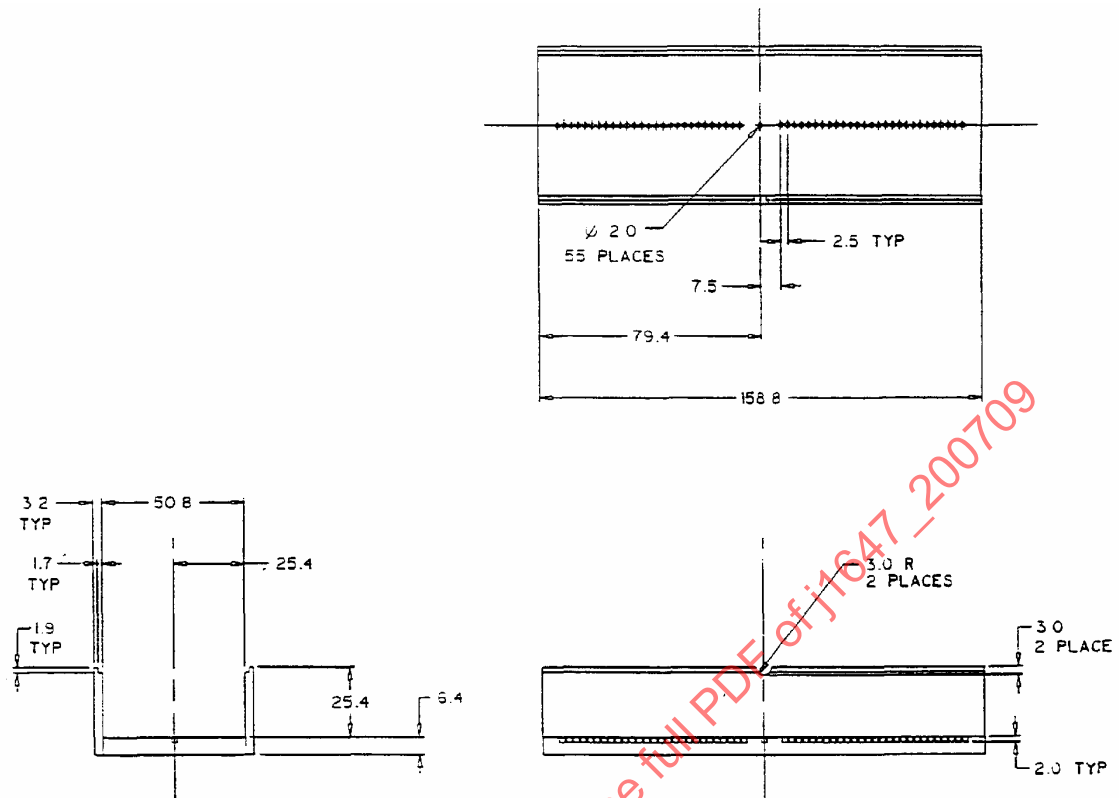


FIGURE 5 - SAE HID TEST CHAMBER - BASE

3.3.3.2 Safety

The threshold limit values for occupational exposure to ultraviolet radiation incident upon skin or eye defined by the American Conference of Governmental Industrial Hygienist should not be exceeded during testing.

The values are found in ISBN:0936712-81-3.

3.4 Surfaces

3.4.1 Exposed Surfaces

Those surfaces of the material, coated or uncoated, exposed to the irradiation of a DFL light source.

3.4.2 Inner Surface

The side of the material, coated or uncoated, closest to the DFL light source.

3.4.3 Outer Surface

The side of the material, coated or uncoated, farthest from the DFL light source.

3.5 Exposure Effects

3.5.1 Color Bleeding

The migration of color out of a plastic part onto the surrounding surface.

3.5.2 Crazing

A network of fine cracks on or beneath the surface of the material with penetration below the surface of the substrate.

3.5.3 Cracking

A separation of adjacent sections of a plastic material with penetration into the specimen.

3.5.4 Haze

The cloudy or turbid appearance of an otherwise transparent specimen caused by light scattered from within the specimen or from its surface.

3.5.5 Delamination

A separation of the layers of a material including coatings.

4. TEST PROCEDURE

4.1 Materials to be Tested

Exposure tests shall be made on each material (as defined in 3.1 and 3.2) used in optical parts employed in DFL motor vehicle lighting devices. Concentrations of polymer components and additives such as plasticizers, lubricants, colorants, weathering stabilizers, and anti-oxidants in plastic materials and/or coatings may be changed without retesting if: the changes are within the limits of composition represented by higher and lower concentrations of these polymer components and additives which have been tested in accordance with Section 4 and found to meet the requirements of Section 5.

4.2 Samples Required

4.2.1 General

Samples of plastic shall be injection molded into polished metal molds to produce test specimens with two flat and parallel faces. Alternative processing techniques may also be used to produce equivalent test specimens. Both inner and outer surfaces shall be prepared as in the intended application.

4.2.2 Number

A minimum of two test samples and one control sample of each material is required, for each thickness to be tested.

4.2.3 Size

Test specimen size shall be 45 mm x 45 mm.

4.2.4 Thickness

The thickness of the sample shall be equal to the minimum thickness of the component in the device. Additionally, the performance limitations of the material can be determined by testing over the thickness range recommended by the manufacturer. Recommended nominal thicknesses are: 1.6 mm, 3.2 mm, 6.4 mm, and 2.3 mm.

4.3 Light Source

A production sample of the DFL light source that will be used in the device, or a representative prototype, shall be used as the light source. The light source used must be new and not operated longer than 10 hours prior to the start of testing.