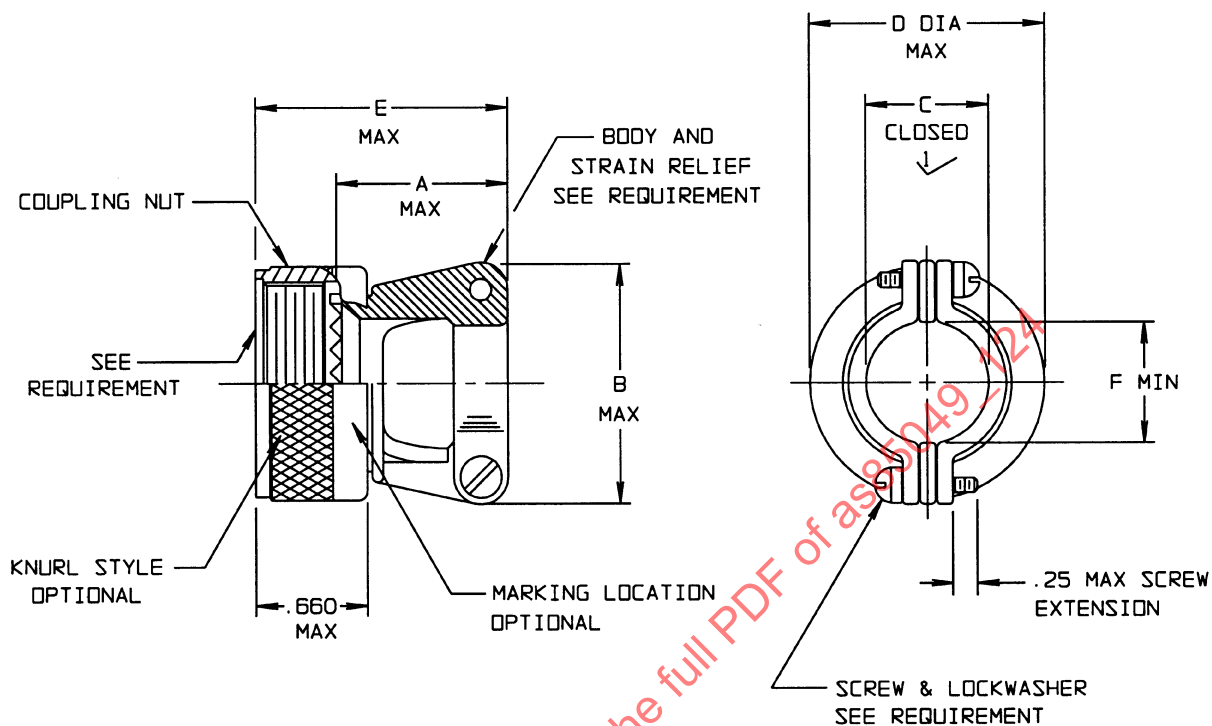


THE REQUIREMENTS FOR ACQUIRING THE ACCESSORIES DESCRIBED HEREIN SHALL CONSIST OF THIS SPECIFICATION AND THE LATEST ISSUE OF SAE AS85049.

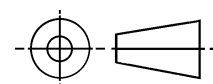
AS85049/124



1/ CABLE ENTRY IS MEASURED WITH SADDLE BARS CLOSED AND BOTTOMED ON CLAMP EARS

FIGURE 1. DIMENSION AND CONFIGURATION

THIRD ANGLE PROJECTION



ISSUED 2003-06

CUSTODIAN: SAE AE-8/AE-8C1

SAE Aerospace
An SAE International Group**AEROSPACE STANDARD**

CONNECTOR ACCESSORIES, ELECTRICAL, STRAIN RELIEF,
STRAIGHT SELF-LOCKING, CATEGORY 4C
(FOR MIL-DTL-38999 SERIES III AND IV CONNECTORS)

AS85049/124
SHEET 1 OF 4

TABLE I. SHELL SIZES AND DIMENSIONS

CONNECTOR SHELL SIZE	SHELL SIZE CODE (REF)	A MAX LENGTH 1	B MAX	C ± .031 DIM 2	D MAX DIA	E MAX OVERALL LENGTH	F MIN	SCREW SIZE (REF)
09	A	.77 (19.6)	.88 (22.4)	.219 (5.56)	.858 (21.79)	1.05 (26.7)	.22 (5.6)	6-32
11	B	.89 (22.6)	.94 (23.9)	.264 (6.71)	.984 (24.99)	1.17 (29.7)	.27 (6.9)	6-32
13	C	1.01 (25.7)	1.12 (28.4)	.344 (8.74)	1.157 (29.39)	1.29 (32.8)	.35 (8.9)	6-32
15	D	1.01 (25.7)	1.19 (30.2)	.460 (11.68)	1.279 (32.49)	1.29 (32.8)	.47 (11.9)	6-32
17	E	1.13 (28.7)	1.44 (36.6)	.545 (13.84)	1.406 (35.71)	1.41 (35.8)	.55 (14.0)	6-32
19	F	1.38 (35.1)	1.56 (39.6)	.615 (15.62)	1.516 (34.50)	1.66 (42.2)	.62 (15.7)	8-32
21	G	1.51 (38.4)	1.69 (42.9)	.698 (17.73)	1.642 (41.70)	1.79 (45.5)	.70 (17.8)	8-32
23	H	1.63 (41.4)	1.75 (44.5)	.780 (19.81)	1.768 (44.91)	1.91 (48.5)	.78 (19.8)	8-32
25	J	1.76 (44.7)	1.88 (47.8)	.850 (21.59)	1.869 (47.98)	2.04 (51.8)	.85 (21.6)	8-32

- 1 THE "A" DIMENSION IS MEASURED FROM THE BOTTOM OF THE ACCESSORY TEETH TO THE END OF THE CLAMP
- 2 CABLE ENTRY IS MEASURED WITH SADDLE BARS CLOSED AND BOTTOMED ON CLAMP EARS.

NOTES:

1. DIMENSIONS ARE IN INCHES.
2. DIMENSIONS APPLY AFTER PLATING.
3. METRIC EQUIVALENTS ARE GIVEN FOR GENERAL INFORMATION ONLY AND ARE BASED ON 25.4 mm = 1 INCH.
4. MILLIMETERS ARE IN PARENTHESES.
5. IF SCREWS WITH WIRE HOLES ARE REQUIRED PROCURER MAY REPLACE WITH MS35275 SCREWS AND MS35338 LOCKWASHERS.

REQUIREMENTS:

CONNECTOR ACCESSORY DESIGN AND CONSTRUCTION:

1. DIMENSIONS AND CONFIGURATION: SEE FIGURE 1 AND TABLE I.
2. INTERFACE DIMENSIONS SHALL CONFORM TO SAE AS85049, FIGURE 3
3. ACCESSORIES CONSIST OF A COUPLING NUT AND STRAIN RELIEF THE COUPLING NUT SHALL BE CAPTIVATED TO, AND ROTABLE ON THE BODY.
4. DETENTED SELF-LOCKING PROVIDES A POSITIVE AUDIBLE DETENTED COUPLING.
5. THE STRAIN RELIEF SHALL ACCOMMODATE SAE AS85049/127 BUSHING STRIP
6. CLAMPS SHALL HAVE NO PROTRUSIONS OR SHARP EDGES WHICH MAY PINCH CABLE.
7. MATERIAL AND FINISH: SEE TABLE II. ACCESSORIES SHALL BE AS SHOWN IN TABLE II.
8. CLAMP, SCREWS AND LOCK WASHERS: 300 SERIES CORROSION-RESISTANT STEEL, PASSIVATE.
9. SELF-LOCKING DEVICE: CORROSION RESISTANT MATERIAL.

TABLE II. MATERIAL AND FINISH

FIGURE	MATERIAL	FINISH
1	ALUMINUM ALLOY IN ACCORDANCE WITH SAE-AS85049	A N 1/ W 2/
	CORROSION RESISTANT STEEL 300 SERIES IN ACCORDANCE WITH SAE-AMS-763	S

- 1/ NOT FOR NAVY USE. AIR FORCE USE IS FOR SPACE APPLICATIONS ONLY. W IS THE PREFERRED FINISH.
- 2/ W IS NOT FOR USE IN SPACE APPLICATION.

SELF-LOCKING DEVICES DESIGN AND CONSTRUCTION:

1. COUPLINGS WITH SELF-LOCKING DEVICES SHALL MEET ALL THE REQUIREMENTS SPECIFIED HEREIN FOR ITS SPECIFIC CATEGORY AND THE FOLLOWING ADDITIONAL TEST:
 - A. LIFE CYCLE: SEE AS85049 PARA 4.6.15
 - B. VIBRATION: SEE AS85049 PARA 3.5.4.1