

## RATIONALE

LIMITED SCOPE REVISION IS REQUIRED TO CLARIFY THE SAFETY WIRE HOLE REQUIREMENTS IN FIGURE 1 FOR THE NON-SELF-LOCKING COUPLING NUT CONFIGURATION AND TO CORRECT METRIC EQUIVALENT VALUES IN TABLE 1.

AS85049/121C HAS BEEN REAFFIRMED TO COMPLY WITH THE SAE FIVE-YEAR REVIEW POLICY.

## NOTICE

THE COMPLETE REQUIREMENTS FOR PROCURING THE PRODUCT DESCRIBED HEREIN SHALL CONSIST OF THIS DOCUMENT AND THE LATEST ISSUE OF AS85049.

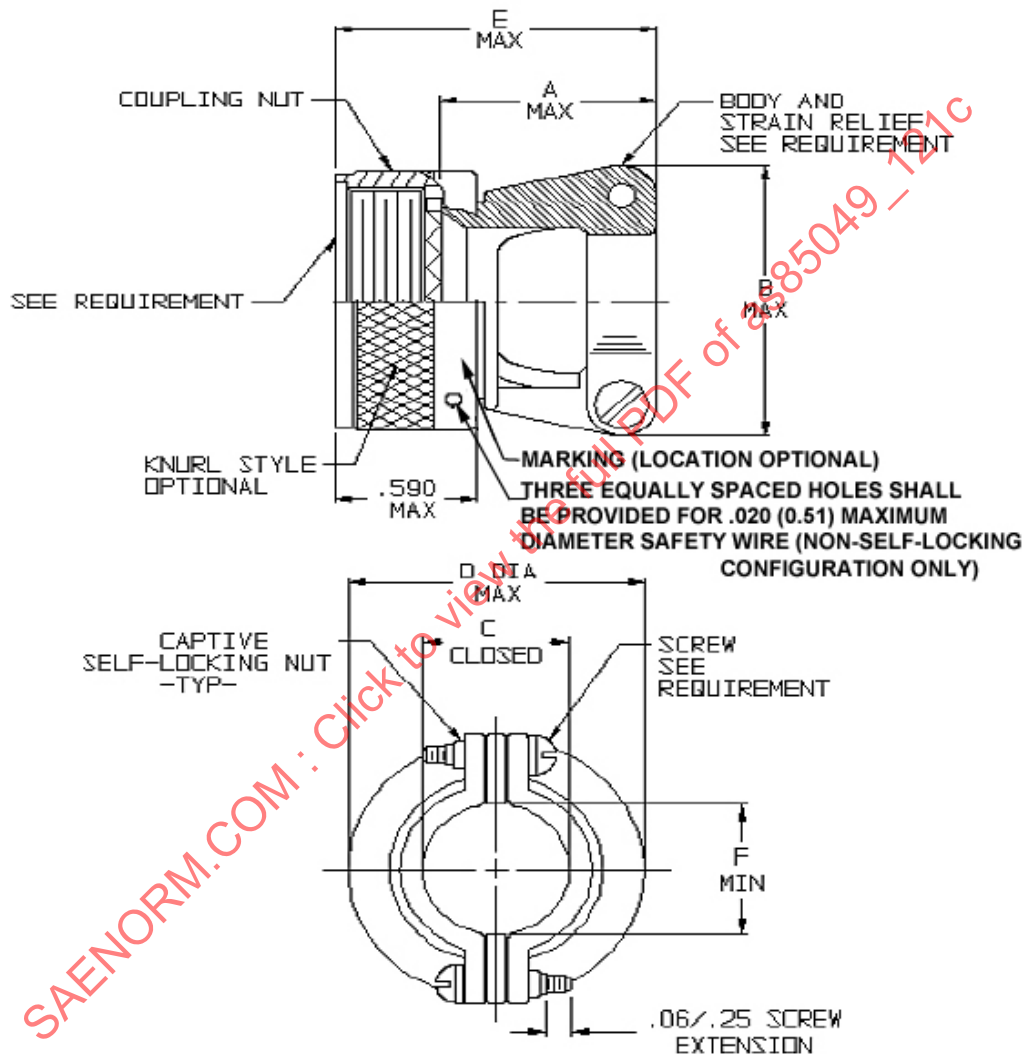
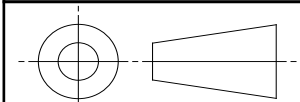


FIGURE 1 - DIMENSION AND CONFIGURATION

For more information on this standard, visit  
<https://www.sae.org/standards/content/AS85049/121C/>

THIRD ANGLE PROJECTION



CUSTODIAN: AE-8C1

PROCUREMENT SPECIFICATION: AS85049

**AEROSPACE STANDARD**

CONNECTOR ACCESSORIES, ELECTRICAL, STRAIN RELIEF,  
STRAIGHT SELF-LOCKING, AND NON-SELF-LOCKING,  
CATEGORY 4C (FOR MIL-DTL-38999 SERIES I AND II  
CONNECTORS)

**AS85049™/121**  
SHEET 1 OF 3

**REV.**  
**C**

Copyright © 2025 SAE International

All rights reserved. No part of this publication may be reproduced, stored in a retrieval system, transmitted, in any form or by any means, electronic, mechanical, photocopying, recording, or otherwise, or used for text and data mining, AI training, or similar technologies, without the prior written permission of SAE.

TO PLACE A DOCUMENT ORDER: Tel: 877-606-7323 (inside USA and Canada)  
Fax: 724-776-0790

Tel: +1 724-776-4970 (outside USA)  
Email: CustomerService@sae.org

SAE WEB ADDRESS: <http://www.sae.org>

**TABLE 1 - SHELL SIZES AND DIMENSIONS**

DASH NO.	CONNECTOR SHELL SIZE		A LENGTH 1/	B MAX	C ±.031 DIM 2/	D MAX DIA	E MAX OVERALL LENGTH	F MIN	SCREW SIZE (REF)
	SERIES II	SERIES I							
08	8	9	.77/.51 (19.6/12.9)	.88 (22.4)	.219 (5.56)	.858 (21.79)	1.01 (25.6)	.22 (5.6)	4-40
10	10	11	.89/.64 (22.6/16.3)	.94 (23.9)	.264 (6.71)	.984 (24.99)	1.13 (28.7)	.27 (6.9)	4-40
12	12	13	1.01/.76 (25.7/19.3)	1.12 (28.4)	.344 (8.74)	1.157 (29.39)	1.25 (31.8)	.35 (8.9)	4-40
14	14	15	1.01/.76 (25.7/19.3)	1.19 (30.2)	.460 (11.68)	1.279 (32.49)	1.25 (31.8)	.47 (11.9)	4-40
16	16	17	1.13/.88 (28.7/22.4)	1.44 (36.6)	.545 (13.84)	1.406 (35.71)	1.37 (34.7)	.55 (14.0)	4-40
18	18	19	1.38/1.13 (35.1/28.7)	1.56 (39.6)	.615 (15.62)	1.516 (34.50)	1.62 (41.0)	.62 (15.7)	6-32
20	20	21	1.51/1.26 (38.4/31.9)	1.69 (42.9)	.698 (17.73)	1.642 (41.70)	1.75 (44.3)	.70 (17.8)	6-32
22	22	23	1.63/1.38 (41.4/35.1)	1.75 (44.5)	.780 (19.81)	1.768 (44.91)	1.87 (47.4)	.78 (19.8)	6-32
24	24	25	1.76/1.51 (44.7/38.4)	1.88 (47.8)	.850 (21.59)	1.869 (47.98)	2.00 (50.7)	.85 (21.6)	8-32

1/ THE "A" DIMENSION IS MEASURED FROM THE BOTTOM OF THE ACCESSORY TEETH TO THE END OF THE STRAIN RELIEF.  
2/ CABLE ENTRY IS MEASURED WITH SADDLE BARS CLOSED AND BOTTOMED ON CLAMP EARS.


**NOTES:**

1. DIMENSIONS ARE IN INCHES.
2. DIMENSIONS APPLY AFTER PLATING.
3. METRIC EQUIVALENTS ARE GIVEN FOR GENERAL INFORMATION ONLY AND ARE BASED ON 25.4 mm = 1 INCH.
4. MILLIMETERS ARE IN PARENTHESES.
5. CLAMP ACCOMMODATES AS85049/127 BUSHING.

**REQUIREMENTS:**

**DESIGN AND CONSTRUCTION:**

1. DIMENSIONS AND CONFIGURATION: SEE FIGURE 1 AND TABLE 1.
2. INTERFACE DIMENSIONS SHALL CONFORM TO AS85049, FIGURE 2.
3. ACCESSORIES CONSIST OF A COUPLING NUT, BODY AND STRAIN RELIEF THE COUPLING NUT SHALL BE CAPTIVATED TO, AND ROTATABLE ON THE BODY.
4. DETENTED SELF-LOCKING PROVIDES A POSITIVE AUDIBLE DETENTED COUPLING. OPTION "N" IS A FREE SPINNING SELF-LOCKING COUPLING.
5. CLAMPS SHALL HAVE NO PROTRUSIONS OR SHARP EDGES WHICH MAY PINCH CABLE.
6. MATERIAL AND FINISH: SEE TABLE 2.
7. LOCKNUTS AND SCREWS: 300 SERIES CORROSION-RESISTANT STEEL, PASSIVATE; SILVER PLATE OPTIONAL.
8. SELF-LOCKING DEVICE: CORROSION RESISTANT MATERIAL.

	<b>AEROSPACE STANDARD</b>	<b>AS85049™/121</b> SHEET 2 OF 3	<b>REV.</b> <b>C</b>
	CONNECTOR ACCESSORIES, ELECTRICAL, STRAIN RELIEF, STRAIGHT SELF-LOCKING, AND NON-SELF-LOCKING, CATEGORY 4C (FOR MIL-DTL-38999 SERIES I AND II CONNECTORS)		