

SAE Executive Standards Committee Rules provide that: "This report is published by SAE to advance the state of technical and engineering sciences. The use of this report is entirely voluntary, and its applicability and suitability for any particular use, including any patent infringement arising therefrom, is the sole responsibility of the user."

SAE reviews each technical report at least every five years at which time it may be revised, reaffirmed, stabilized, or cancelled. SAE invites your written comments and suggestions.

REV.
A

AS81582™/1

FEDERAL SUPPLY CLASS
5935

RATIONALE

AS81582/1A HAS BEEN REAFFIRMED TO COMPLY WITH THE SAE FIVE-YEAR REVIEW POLICY.

NOTICE

THE REQUIREMENTS FOR PROCURING THE PRODUCT DESCRIBED HEREIN SHALL CONSIST OF THIS SPECIFICATION SHEET AND THE LATEST ISSUE OF SAE AS81582.

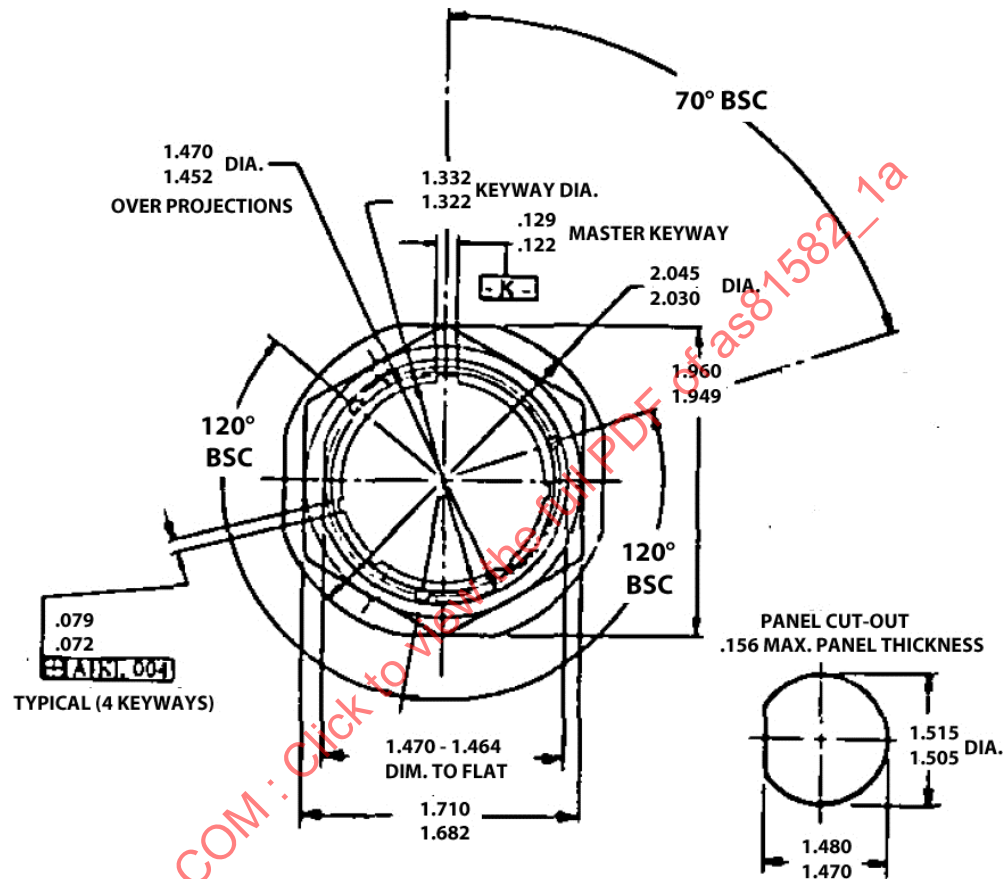
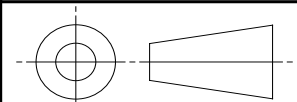


FIGURE 1 – CONNECTOR CONFIGURATION AND DIMENSIONS

For more information on this standard, visit

<https://www.sae.org/standards/content/AS81582/1A/>

THIRD ANGLE PROJECTION



CUSTODIAN: AE-8/AE-8C1

PROCUREMENT SPECIFICATION: AS81582



AEROSPACE STANDARD

CONNECTORS, ELECTRIC, BAYONET, COUPLING,
UMBILICAL RECEPTACLE, JAM NUT MOUNTING,
RFI SHIELDED, CRIMP CONTACT, CLASS E

AS81582™/1
SHEET 1 OF 4

REV.
A

Copyright © 2021 SAE International

All rights reserved. No part of this publication may be reproduced, stored in a retrieval system or transmitted, in any form or by any means, electronic, mechanical, photocopying, recording, or otherwise, without the prior written permission of SAE.

TO PLACE A DOCUMENT ORDER: Tel: 877-606-7323 (inside USA and Canada)
Fax: 724-776-0790

Tel: +1 724-776-4970 (outside USA)
Email: CustomerService@sae.org

SAE WEB ADDRESS: <http://www.sae.org>

ISSUED 2004-04 REVISED 2011-11 REAFFIRMED 2021-10

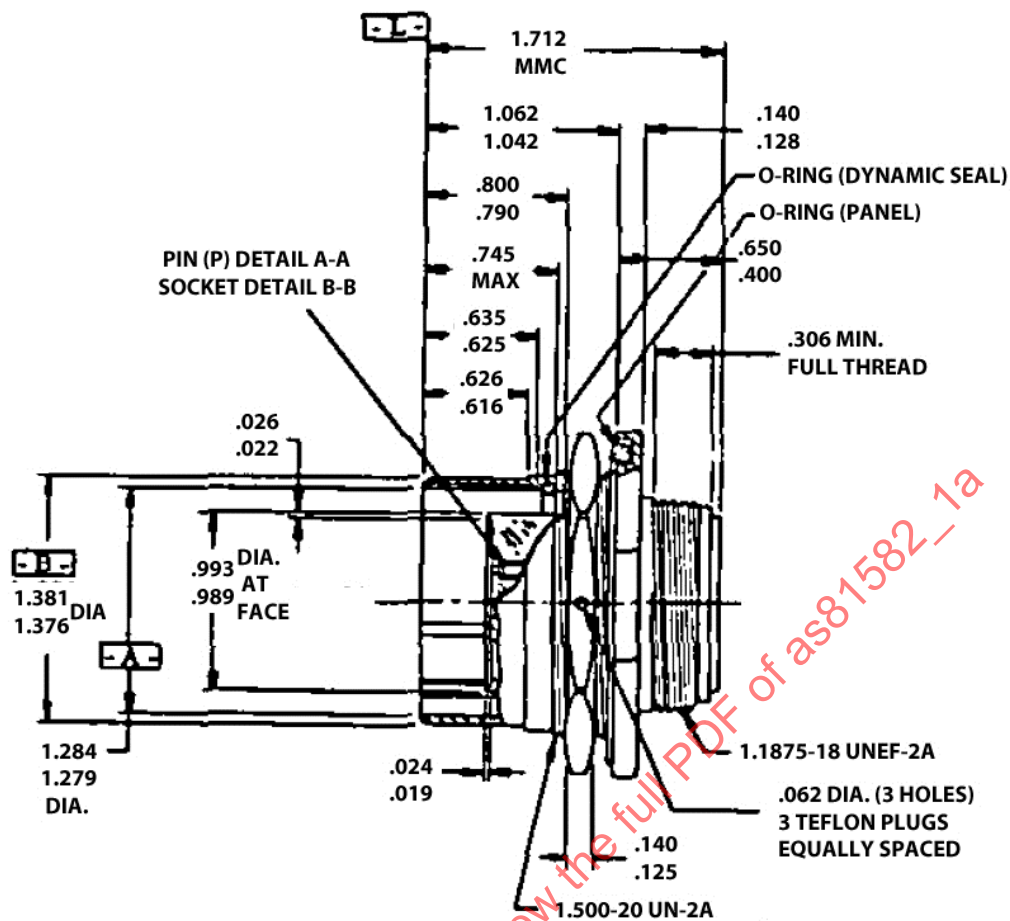


FIGURE 1 – CONNECTOR CONFIGURATION AND DIMENSIONS (CONTINUED)

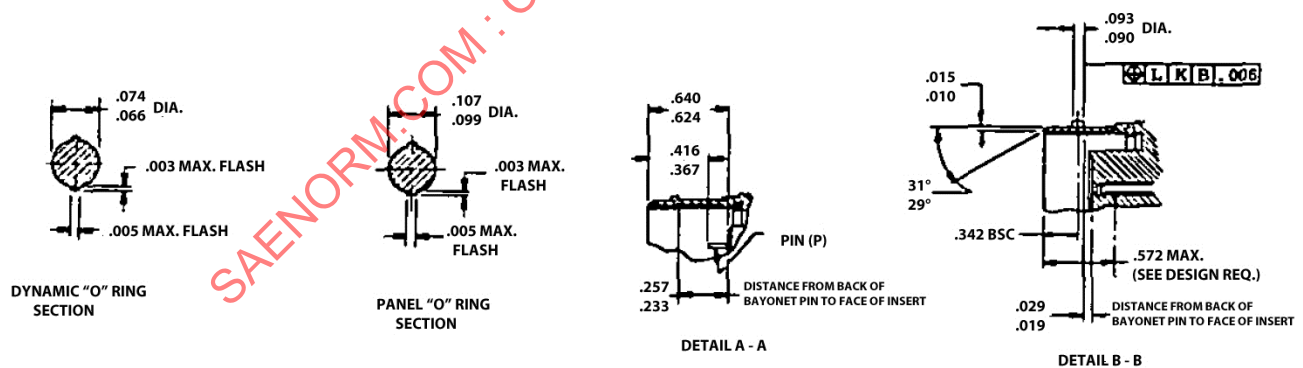


FIGURE 1 – CONNECTOR CONFIGURATION AND DIMENSIONS (CONTINUED)

	<p align="center">AEROSPACE STANDARD CONNECTORS, ELECTRIC, BAYONET, COUPLING, UMBILICAL RECEPTACLE, JAM NUT MOUNTING, RFI SHIELDED, CRIMP CONTACT, CLASS E</p>	<p>AS81582™/1 SHEET 2 OF 4</p>	<p>REV. A</p>
--	---	---	---------------------------------

TABLE 1 – METRIC EQUIVALENT EXAMPLES

INCHES	MM	INCHES	MM	INCHES	MM	INCHES	MM	INCHES	MM
.003	.08	.074	1.88	.306	7.77	.745	18.92	1.452	36.88
.004	.10	.079	2.01	.342	8.70	.790	20.07	1.464	37.19
.005	.13	.090	2.29	.367	9.32	.800	20.32	1.470	37.34
.006	.15	.093	2.36	.400	10.16	.989	25.12	1.480	37.59
.010	.25	.099	2.51	.416	10.57	.993	25.22	1.500	38.10
.015	.38	.107	2.72	.572	14.53	1.042	26.47	1.505	38.23
.019	.48	.122	3.10	.616	15.65	1.062	26.97	1.515	38.48
.022	.56	.125	3.18	.624	15.85	1.1875	30.16	1.682	42.72
.024	.61	.128	3.25	.625	15.88	1.279	32.49	1.710	43.43
.026	.66	.129	3.28	.626	15.90	1.284	32.61	1.712	43.48
.029	.74	.140	3.56	.635	16.13	1.322	33.58	1.949	49.50
.062	1.57	.156	3.96	.640	16.26	1.332	33.83	1.960	49.78
.066	1.68	.233	5.92	.650	16.51	1.376	34.95	2.030	51.56
.072	1.83	.257	6.53			1.381	35.08	2.045	51.94

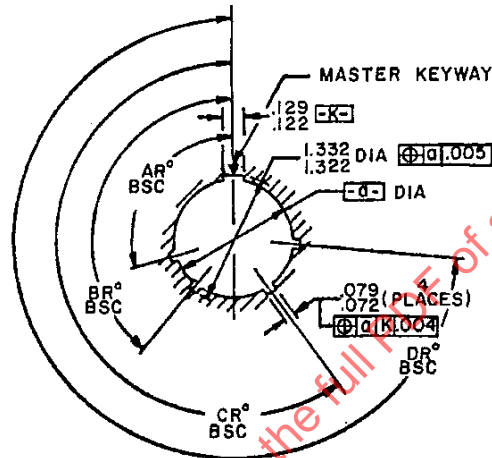
FIGURE 2 - KEYWAY POSITIONS - RECEPTACLE TYPE SHELL
SHELL SIZE 22 - FRONT FACE VIEW

TABLE 2 – KEYWAY POSITIONS

KEY AND KEYWAY POSITION NUMBER	AR°, AP° BASIC	BR°, BP° BASIC	CR°, CP° BASIC	DR°, DP° BASIC
A (NORMAL)	105	140	215	265
B	18	149	192	259
C	92	152	222	342
D	84	152	204	334
E	24	135	199	240
F	98	152	268	330

REQUIREMENTS: ALL REQUIREMENTS SHALL CONSIST OF THIS SPECIFICATION AND THE LATEST ISSUE OF AS81582.

1. DESIGN

DIMENSIONS ARE IN INCHES. METRIC EQUIVALENTS IN TABLE 1 ARE GIVEN FOR INFORMATION PURPOSES ONLY. UNLESS OTHERWISE SPECIFIED, TOLERANCES ARE $\pm .010$ FOR DECIMALS AND $\pm .5$ DEGREES FOR ANGLES. DIMENSIONS SHOWN APPLY AFTER PLATING. NORMAL MATING KEYWAY LOCATION SHOWN. THE .572 MAX. DIMENSION IN DETAIL B-B IS THE DISTANCE FROM THE FRONT OF THE SHELL TO THE POINT AT WHICH A GAGE PIN, HAVING THE SAME BASIC DIAMETER AS THE MATING CONTACT WITH A SQUARE END, ENGAGES THE SOCKET CONTACT SPRING. THIS CONNECTOR IS SHELL SIZE 22.

INSERT ARRANGEMENTS: SHALL BE AS SPECIFIED IN MIL-STD-1672.

SERVICE RATING: I.

SOCKET CONTACTS: SOCKET CONTACTS SHALL CONFORM TO AS39029/32.

	AEROSPACE STANDARD	AS81582™/1 SHEET 3 OF 4	REV. A
	CONNECTORS, ELECTRIC, BAYONET, COUPLING, UMBILICAL RECEPTACLE, JAM NUT MOUNTING, RFI SHIELDED, CRIMP CONTACT, CLASS E		