

SAE Technical Standards Board Rules provide that: "This report is published by SAE to advance the state of technical and engineering sciences. The use of this report is entirely voluntary, and its applicability and suitability for any particular use, including any patent infringement arising therefrom, is the sole responsibility of the user."

SAE reviews each technical report at least every five years at which time it may be reaffirmed, revised, or cancelled. SAE invites your written comments and suggestions.

AS33701

FEDERAL SUPPLY CLASS
5935

NOTICE

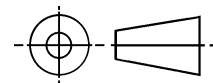
THIS DOCUMENT HAS BEEN TAKEN DIRECTLY FROM U.S. MILITARY SPECIFICATION MS33701G, AMENDMENT 1, NOTICE 1, AND CONTAINS ONLY MINOR EDITORIAL AND FORMAT CHANGES REQUIRED TO BRING IT INTO CONFORMANCE WITH THE PUBLISHING REQUIREMENTS OF SAE TECHNICAL STANDARDS. THE INITIAL RELEASE OF THIS DOCUMENT IS INTENDED TO REPLACE MS33701G, AMENDMENT 1, NOTICE 1,. ANY PART NUMBERS ESTABLISHED BY THE ORIGINAL SPECIFICATION REMAIN UNCHANGED.

THE ORIGINAL MILITARY SPECIFICATION WAS ADOPTED AS AN SAE STANDARD UNDER THE PROVISIONS OF THE SAE TECHNICAL STANDARDS BOARD (TSB) RULES AND REGULATIONS (TSB 001) PERTAINING TO ACCELERATED ADOPTION OF GOVERNMENT SPECIFICATIONS AND STANDARDS. TSB RULES PROVIDE FOR (A) THE PUBLICATION OF PORTIONS OF UNREVISED GOVERNMENT SPECIFICATIONS AND STANDARDS WITHOUT CONSENSUS VOTING AT THE SAE COMMITTEE LEVEL, AND (B) THE USE OF THE EXISTING GOVERNMENT SPECIFICATION OR STANDARD FORMAT.

UNDER DEPARTMENT OF DEFENSE POLICIES AND PROCEDURES, ANY QUALIFICATION REQUIREMENTS AND ASSOCIATED QUALIFIED PRODUCTS LISTS ARE MANDATORY FOR DOD CONTRACTS. ANY REQUIREMENT RELATING TO QUALIFIED PRODUCTS LISTS (QPL'S) HAS NOT BEEN ADOPTED BY SAE AND IS NOT PART OF THIS SAE TECHNICAL DOCUMENT.

SAENORM.COM : Click to view the full PDF of as33701

THIRD ANGLE PROJECTION



ISSUED 2002-02

CUSTODIAN: SAE AE-8/AE-8C1

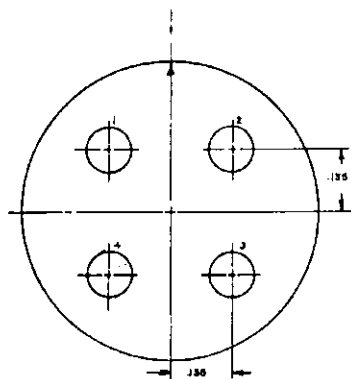
PROCUREMENT SPECIFICATION: MIL-C-81703

SAE The Engineering Society
For Advancing Mobility
Land Sea Air and Space®
INTERNATIONAL
400 Commonwealth Drive, Warrendale, PA 15096-0001

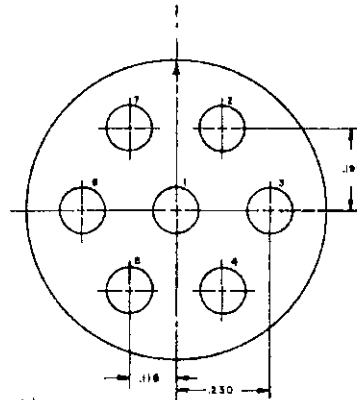
AEROSPACE STANDARD

INSERT ARRANGEMENTS, ELECTRIC
CONNECTOR, SHELL SIZE 19

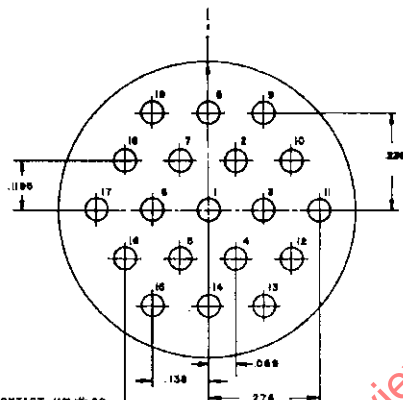
AS33701
SHEET 1 OF 4

CONTACT (4) OF 12
SERVICE RATING: II

INSERT ARR. 19-4

CONTACT (7) OF 12
SERVICE RATING: I

INSERT ARR. 19-7

CONTACT (20) OF 20
SERVICE RATING: I

INSERT ARR. 19-50 (C)




INSERT POSITION FIGURE

INSERT ARR.	INSERT POSITIONS α DEGREES (a)					
	NORMAL	W	X	Y	B	C
(C) 19-50	0°	(a)	(a)	76°	180°	228°
19-4	0°	(a)	(a)	22 1/2°	138°	247 1/2°
19-7	0°	(a)	(a)	70°	180°	225°

- (a) α TO BE WITHIN .005 INCHES OF THE REQUIRED POSITION.
- (b) THESE INSERT POSITIONS ARE NOT TO BE PROVIDED.
- (c) INSERT ARR. 19-50 SUPERSEDES AND IS INTERCHANGEABLE WITH INSERT ARR. 19.

DIMENSIONS AND MARKINGS SHOWN ARE FOR FRONT FACE OF PIN INSERT (SOCKET INSERT OPPOSITE).
UNLESS OTHERWISE INDICATED, DIMENSIONS ARE SYMMETRICAL ABOUT CENTERLINE.

 INDICATES "MASTER KEY OR KEYWAY OF SHELL."

 INDICATES TERMINUS OF INDEXING RADIUS OF INSERT"

IN NORMAL POSITION, THE INDEXING RADIUS COINCIDES WITH ϕ OF THE "MASTER KEY OR KEYWAY OF SHELL."

IN ALTERNATE POSITIONS, THE PIN INSERT IS ROTATED α DEGREES CLOCKWISE RELATIVE TO ϕ OF THE MASTER KEY OR KEYWAY OF SHELL AS INDICATED.

IN ALTERNATE POSITIONS THE SOCKET INSERT IS ROTATED α DEGREES COUNTER-CLOCKWISE RELATIVE TO ϕ OF THE MASTER KEY OR KEYWAY OF SHELL."

AS33701

RECEPTACLES (Ref)

<u>MS3130</u>	<u>PLUGS (Ref)</u>
MS3132	MS3137
MS3134	MS3138
MS3139	MS3147
MS3140	MS3148
MS3143	MS3446
MS3144	MS3467
MS3145	MS3468
MS3149	MS3445
MS3424	
MS3463	
MS3464	
MS3466	
MS3469	

DIMENSIONS IN INCHES. ANGLES IN DEGREES. TOLERANCES: DECIMALS $\pm .005$.

THIS IS A DESIGN STANDARD. NOT TO BE USED AS A PART NUMBER.

FOR DESIGN FEATURE PURPOSES THIS STANDARD TAKES PRECEDENCE OVER PROCUREMENT DOCUMENTS REFERENCED HEREIN.

REFERENCE DOCUMENTS SHALL BE OF THE ISSUE IN EFFECT ON DATE OF INVITATIONS FOR BID.

SAENORM.COM : Click to view the full PDF of as33701