

SAE Technical Standards Board Rules provide that: "This report is published by SAE to advance the state of technical and engineering sciences. The use of this report is entirely voluntary, and its applicability and suitability for any particular use, including any patent infringement arising therefrom, is the sole responsibility of the user."

SAE reviews each technical report at least every five years at which time it may be reaffirmed, revised, or cancelled. SAE invites your written comments and suggestions.

**AS24563**

Submitted for recognition as an American National Standard

FEDERAL SUPPLY CLASS  
5340

# NOTICE

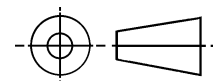
THIS DOCUMENT HAS BEEN TAKEN DIRECTLY FROM U.S. MILITARY SPECIFICATION MS24563F AND CONTAINS ONLY MINOR EDITORIAL AND FORMAT CHANGES REQUIRED TO BRING IT INTO CONFORMANCE WITH THE PUBLISHING REQUIREMENTS OF SAE TECHNICAL STANDARDS. THE INITIAL RELEASE OF THIS DOCUMENT IS INTENDED TO REPLACE MS24563F. ANY PART NUMBERS ESTABLISHED BY THE ORIGINAL SPECIFICATION REMAIN UNCHANGED.

THE ORIGINAL MILITARY SPECIFICATION WAS ADOPTED AS AN SAE STANDARD UNDER THE PROVISIONS OF THE SAE TECHNICAL STANDARDS BOARD (TSB) RULES AND REGULATIONS (TSB 001) PERTAINING TO ACCELERATED ADOPTION OF GOVERNMENT SPECIFICATIONS AND STANDARDS. TSB RULES PROVIDE FOR (A) THE PUBLICATION OF PORTIONS OF UNREVISED GOVERNMENT SPECIFICATIONS AND STANDARDS WITHOUT CONSENSUS VOTING AT THE SAE COMMITTEE LEVEL, AND (B) THE USE OF THE EXISTING GOVERNMENT SPECIFICATION OR STANDARD FORMAT.

UNDER DEPARTMENT OF DEFENSE POLICIES AND PROCEDURES, ANY QUALIFICATION REQUIREMENTS AND ASSOCIATED QUALIFIED PRODUCTS LISTS ARE MANDATORY FOR DOD CONTRACTS. ANY REQUIREMENT RELATING TO QUALIFIED PRODUCTS LISTS (QPL'S) HAS NOT BEEN ADOPTED BY SAE AND IS NOT PART OF THIS TECHNICAL REPORT.

SAENORM.COM : Click to view the full PDF of as24563

THIRD ANGLE PROJECTION



ISSUED 1998-11

PREPARED BY COMMITTEE G-3

PROCUREMENT SPECIFICATION: NONE

**SAE** The Engineering Society  
For Advancing Mobility  
Land Sea Air and Space®  
INTERNATIONAL  
400 Commonwealth Drive, Warrendale, PA 15096-0001

## AEROSPACE STANDARD

COUPLING FLANGERS, V-BAND,  
PROFILE DIMENSIONS FOR

**AS24563**  
SHEET 1 OF 4

Copyright 1998 Society of Automotive Engineers, Inc.  
All rights reserved.

Printed in the U.S.A.

QUESTIONS REGARDING THIS DOCUMENT: (724) 772-8510  
TO PLACE A DOCUMENT ORDER: (724) 776-4070

FAX: (724) 776-0243  
FAX: (724) 776-0700

SAE WEB ADDRESS: <http://www.sae.org>

TABLE I	
"A" TUBE OUTSIDE DIAMETER	"B" FLANGE OUTSIDE DIAMETER ±.010
1.000	1.510
1.250	1.760
1.500	2.010
1.750	2.260
2.000	2.510
2.250	2.760
2.500	3.010
2.750	3.260
3.000	3.510
3.250	3.760
3.500	4.010
4.000	4.510
4.500	5.010

NOTE: GAUGE DIA. = NOMINAL FLANGE  
O.D. -0.200

TABLE II		
"C" TUBE OUTSIDE DIAMETER	"D" FLANGE OUTSIDE DIAMETER ±.010	"E" FLANGE OUTSIDE DIAMETER ±.010
1.000	1.782	1.750
1.250	2.032	2.000
1.500	2.282	2.250
1.750	2.532	2.500
2.000	2.782	2.750
2.250	3.032	3.000
2.500	3.282	3.250
2.750	3.532	3.500
3.000	3.782	3.750
3.250	4.032	4.000
3.500	4.282	4.250
4.000	4.782	4.750
4.500	5.282	5.250
5.000	5.782	5.750
5.500	6.282	6.250
6.000	6.782	6.750
6.500	7.282	7.250
7.000	7.782	7.750
7.500	8.282	8.250
8.000	8.782	8.750

NOTE: GAUGE DIA. = NOMINAL FLANGE  
O.D. -0.200

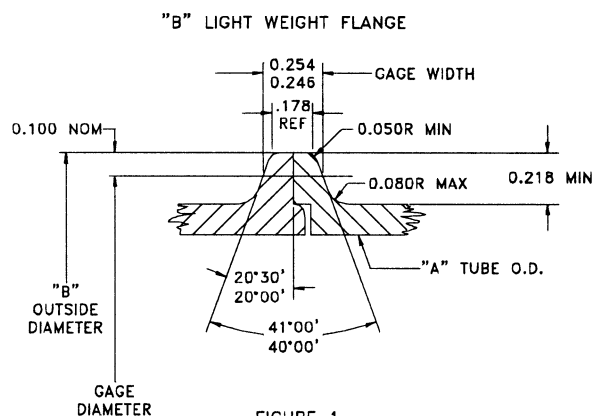


FIGURE 1

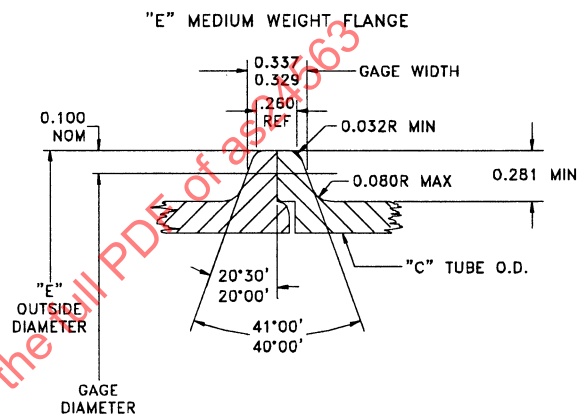


FIGURE 2A

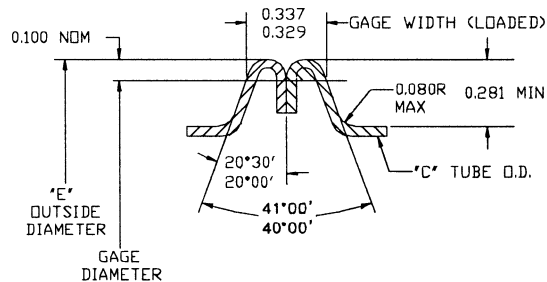


FIGURE 2B

THIS IS A DESIGN STANDARD. NOT TO BE USED AS A PART NUMBER

TABLE III

"F" TUBE OUTSIDE DIAMETER	"G" FLANGE OUTSIDE DIAMETER $\pm 0.010$
1.000	1.552
1.250	1.802
1.500	2.122
1.750	2.362
2.000	2.622
2.250	2.886
2.500	3.136
2.750	3.386
3.000	3.636
3.250	3.886
3.500	4.131
3.750	4.391
4.000	4.641
4.500	5.141
5.000	5.641
5.500	6.141
6.000	6.641
6.500	7.141
7.000	7.641
7.500	8.141
8.000	8.641

NOTE: GUAGE DIA. = NOMINAL FLANGE  
O.D.  $-0.1690$

TABLE IV  
"H" FLANGE

OUTSIDE DIAMETER $\pm 0.010$
9.428
9.928
10.428
10.928
11.428
11.928
12.428
12.928
13.428
13.928
14.428
14.928

NOTE: GAGE DIA. =  
NOMINAL FLANGE  
O.D.  $-0.200$

## "C" ALTERNATE MEDIUM WEIGHT FLANGE

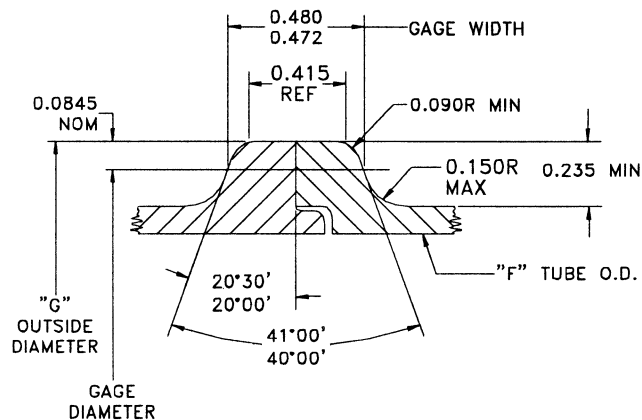


FIGURE 3A

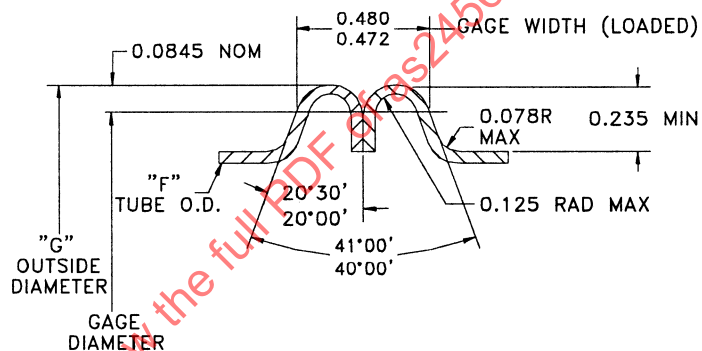


FIGURE 3B

## "H" HEAVY WEIGHT FLANGE

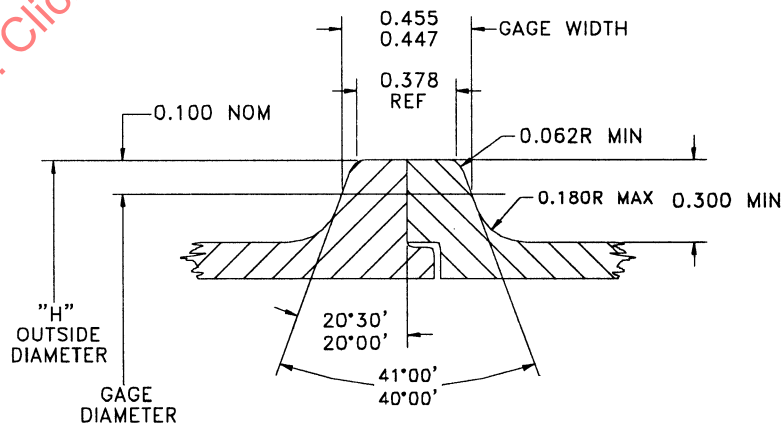


FIGURE 4