

SAE Technical Standards Board Rules provide that: "This report is published by SAE to advance the state of technical and engineering sciences. The use of this report is entirely voluntary, and its applicability and suitability for any particular use, including any patent infringement arising therefrom, is the sole responsibility of the user."

SAE reviews each technical report at least every five years at which time it may be revised, reaffirmed, stabilized, or cancelled. SAE invites your written comments and suggestions.

REV.
A

AS21943

FEDERAL SUPPLY CLASS
4730

RATIONALE

AS21943A HAS BEEN REAFFIRMED TO COMPLY WITH THE SAE FIVE-YEAR REVIEW POLICY.

NOTICE

THE INITIAL SAE PUBLICATION OF THIS DOCUMENT WAS TAKEN DIRECTLY FROM U.S MILITARY STANDARD MS21943C. THIS SAE STANDARD RETAINS THE SAME PART NUMBER ESTABLISHED BY THE ORIGINAL MILITARY DOCUMENT.

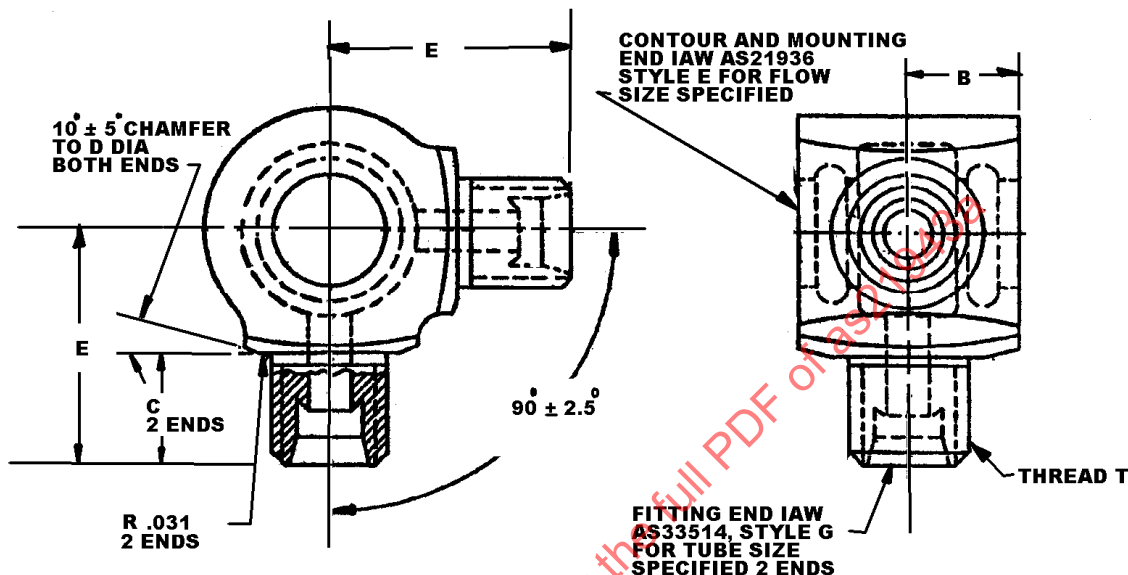


FIGURE 1 - BODY, CLUSTER FITTING, TWO WAY, 90°, FLARELESS, DIMENSIONS AND CONFIGURATION

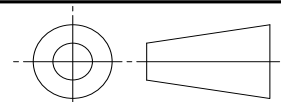
TABLE 1A - BODY, CLUSTER FITTING, TWO-WAY, 90°, FLARELESS, LOW FLOW, DIMENSIONS

LOW FLOW SIZE DASH NO.	TUBE OD	THREAD T AS8879	B	C	D	E	WEIGHT LB EACH APPROX
-3L	.1875	.3750-24 UNJF-3A	.500	.484	.710	1.047	.099
-4L	.2500	.4375-20 UNJF-3A	.500	.531	.710	1.094	.101
-5L	.3125	.5000-20 UNJF-3A	.500	.531	.710	1.094	.102
-6L	.3750	.5625-18 UNJF-3A	.500	.562	.710	1.125	.104

INACTIVE PART /15/

SAE values your input. To provide feedback on this Technical Report, please visit <http://www.sae.org/technical/standards/AS21943A>

THIRD ANGLE PROJECTION



CUSTODIAN: G-3/G-3B

PROCUREMENT SPECIFICATION: AS18280 /10/



AEROSPACE STANDARD

(R) BODY, CLUSTER FITTING,
TWO WAY 90°,
FLARELESS

AS21943
SHEET 1 OF 3

REV.
A

Copyright 2015 SAE International

All rights reserved. No part of this publication may be reproduced, stored in a retrieval system or transmitted, in any form or by any means, electronic, mechanical, photocopying, recording, or otherwise, without the prior written permission of SAE.

TO PLACE A DOCUMENT ORDER: Tel: 877-606-7323 (inside USA and Canada)
Fax: 724-776-0790

Tel: +1 724-776-4970 (outside USA)
Email: CustomerService@sae.org

SAE WEB ADDRESS: <http://www.sae.org>

ISSUED 1999-07 REVISED 2007-11 REAFFIRMED 2015-04

TABLE 1B - BODY, CLUSTER FITTING, TWO-WAY, 90°, FLARELESS,
HIGH FLOW, DIMENSIONS

HIGH FLOW SIZE DASH NO.	TUBE OD	THREAD T AS8879	B	C	D	E	WEIGHT LB EACH APPROX
-4H	.2500	.4375-20 UNJF-3A	.594	.531	.710	1.343	.215
-5H	.3125	.5000-20 UNJF-3A	.594	.531	.710	1.343	.218
-6H	.3750	.5625-18 UNJF-3A	.594	.562	.710	1.375	.220
-8H	.5000	.7500-16 UNJF-3A	.594	.656	.750	1.469	.228

NOTES:

1. MATERIAL: ALUMINUM ALLOY 7075, SEE PROCUREMENT SPECIFICATION.
2. FINISH: SEE PROCUREMENT SPECIFICATION.
3. REMOVE BURRS AND SHARP EDGES.
4. INSTALLATION IN ACCORDANCE WITH MS21931.
5. SURFACE FINISH IN ACCORDANCE WITH ASME B46.1. UNLESS OTHERWISE SPECIFIED ALL OUTSIDE MACHINED SURFACES SHALL BE 125 μ in Ra AND ALL INSIDE SURFACES SHALL BE 250 μ in Ra.
6. DIMENSIONS ARE IN INCHES. UNLESS OTHERWISE SPECIFIED TOLERANCES DECIMALS \pm .010, ANGLES \pm .5°.
7. DIMENSIONING AND TOLERANCING IN ACCORDANCE WITH ASME Y14.5M-1994.
8. PART NUMBERS:

LETTERS "L" AND "H" IN PART NUMBERS INDICATE LOW FLOW AND HIGH FLOW RESPECTIVELY

CODE "W" FOLLOWING BASIC PART NUMBER MS21943 SPECIFIES 7075 ALUMINUM ALLOY

NO CODE LETTER FOR ALUMINUM ALLOY 2014/2024 ARE CANCELLED SUPERSEDED BY CODE "W" 7075 ALUMINUM. 2014/2024 PARTS ARE NO LONGER AVAILABLE FOR PROCUREMENT AFTER 2006

EXAMPLES OF PART NUMBERS:

MS21943W8L - BODY, .5000 TUBING, LOW FLOW, 7075 ALUMINUM ALLOY

MS21943W8H - BODY, .5000 TUBING, HIGH FLOW, 7075 ALUMINUM ALLOY

	AEROSPACE STANDARD	AS21943 SHEET 2 OF 3	REV. A
	(R) BODY, CLUSTER FITTING, TWO WAY 90°, FLARELESS		