

AS1895/2C HAS BEEN REAFFIRMED TO COMPLY WITH THE SAE FIVE-YEAR REVIEW POLICY.

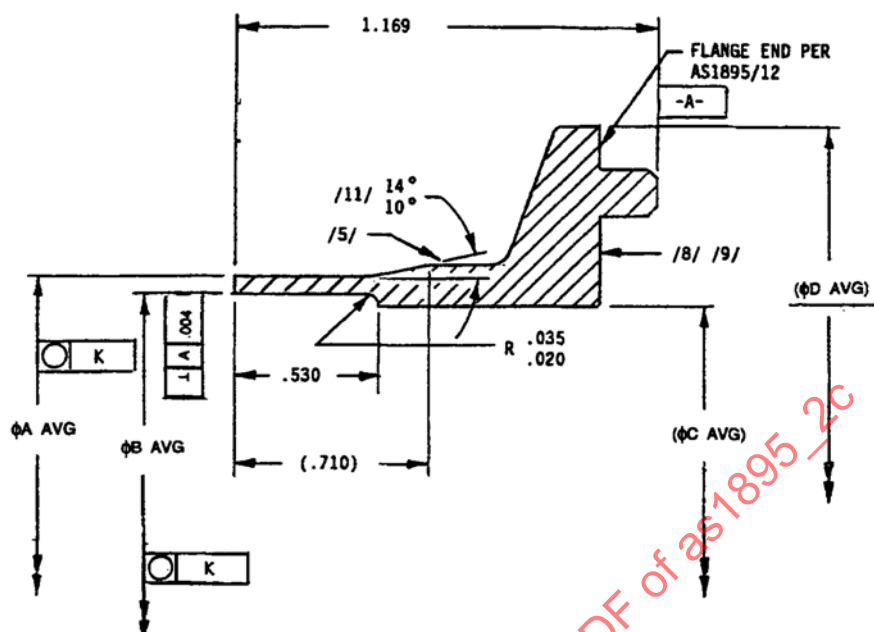


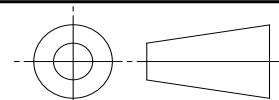
FIGURE 1 - TYPICAL VIEW

(R) TABLE 1 - DIMENSIONS AND WEIGHTS

PART NUMBER	(TUBE SIZE)	A +.000/- .005	B +.005/- .000	C	D	K	MAX WT LB
AS1895/2-150	1.50	1.600	1.505	1.450	2.250	.002	.28
AS1895/2-175	1.75	1.850	1.755	1.700	2.500	.002	.32
AS1895/2-200	2.00	2.100	2.005	1.950	2.750	.002	.36
AS1895/2-225	2.25	2.350	2.255	2.200	3.000	.002	.40
AS1895/2-250	2.50	2.600	2.505	2.440	3.250	.003	.45
AS1895/2-275	2.75	2.850	2.755	2.680	3.500	.003	.48
AS1895/2-300	3.00	3.100	3.005	2.920	3.750	.003	.52
AS1895/2-325	3.25	3.350	3.255	3.170	4.000	.003	.57
AS1895/2-350	3.50	3.687	3.505	3.410	4.250	.004	.72
AS1895/2-400	4.00	4.187	4.005	3.900	4.750	.004	.80
AS1895/2-450	4.50	4.687	4.505	4.380	5.250	.005	.92
AS1895/2-500	5.00	5.187	5.005	4.870	5.750	.005	1.03
AS1895/2-550	5.50	5.687	5.505	5.360	6.250	.006	1.14
AS1895/2-600	6.00	6.187	6.005	5.850	6.750	.006	1.25
AS1895/2-650	6.50	6.687	6.505	6.340	7.250	.007	1.37
AS1895/2-700	7.00	7.187	7.005	6.830	7.750	.007	1.49
AS1895/2-750	7.50	7.687	7.505	7.320	8.250	.008	1.61

SAE values your input. To provide feedback on this Technical Report, please visit <http://www.sae.org/technical/standards/AS1895/2C>

THIRD ANGLE PROJECTION



CUSTODIAN: G-3/G-3A

PROCUREMENT SPECIFICATION: /3/ AS1895

SAE Aerospace
An SAE International Group

AEROSPACE STANDARD

FLANGE, MALE, SEAM WELD
TYPE I STANDARD PROFILE

SAE AS1895/2
SHEET 1 OF 2

REV.
C