

REV.  
B

AS1893

FEDERAL SUPPLY CLASS  
4730

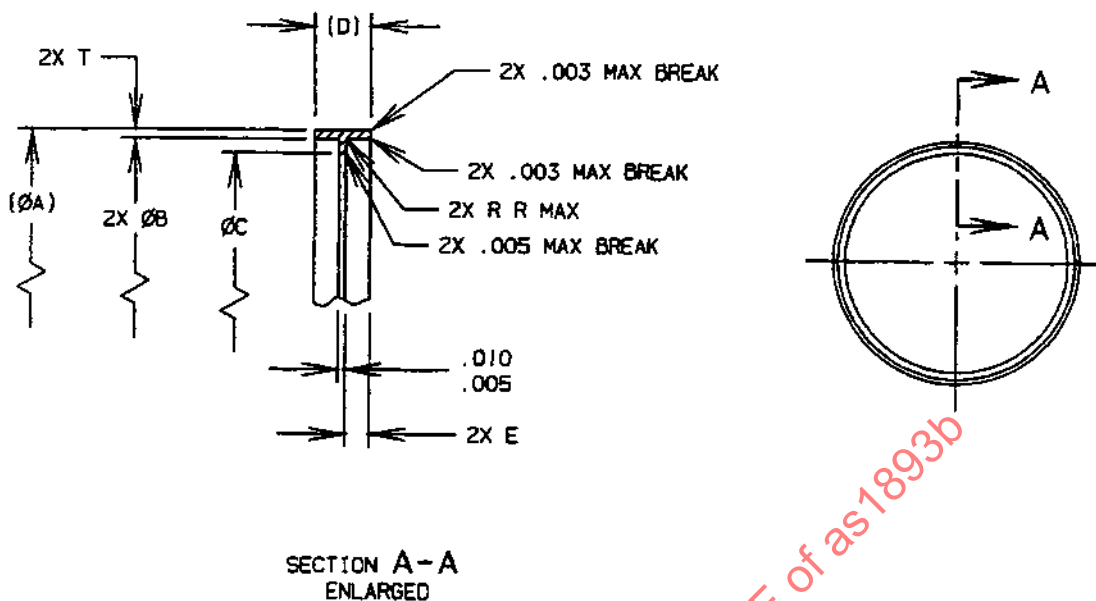
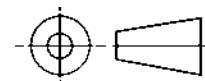


FIGURE 1 - RING

TABLE 1 - DIMENSIONS AND WEIGHTS

BASIC NO. AS1893 /17/ SIZE CODE	(NOMINAL TUBE SIZE)	(NOMINAL TUBE WALL)	A	B + .003 - .002 /7/	C /7/	D	E	R	T ± .002	LB/100 MAX
04	.250	.016	.276	.255	.225	.050	.021	.005	.010	.0161
05	.312	.020	.338	.318	.288	.050	.021	.005	.010	.0192
06	.375	.020	.402	.381	.351	.050	.021	.005	.010	.0239
08	.500	.026	.526	.506	.476	.060	.026	.005	.010	.0353
10	.625	.033	.662	.632	.592	.070	.031	.006	.015	.0746
12	.750	.039	.788	.757	.717	.080	.036	.006	.015	.103
16	1.000	.052	1.048	1.007	.955	.090	.041	.007	.020	.201
20	1.125	.065	1.298	1.257	1.193	.100	.046	.007	.020	.282

THIRD ANGLE PROJECTION



CUSTODIAN: SAE G-3/G-3B

PROCUREMENT SPECIFICATION: /6/ AS1576

**SAE Aerospace**  
An SAE International Group

(R)

**AEROSPACE STANDARD**

RING, WELD,  
3000 psi, CRES

**AS1893**  
SHEET 1 OF 2

**REV.  
B**