

NFPA 1221
Standard for
the Installation,
Maintenance, and Use
of Public Fire Service
Communication
Systems
1994 Edition



NOTICE

All questions or other communications relating to this document should be sent only to NFPA headquarters, addressed to the attention of the Committee responsible for the document.

For information on the procedures for requesting Technical Committees to issue Formal Interpretations, proposing Tentative Interim Amendments, proposing amendments for Committee consideration, and appeals on matters relating to the content of the document, write to the Secretary, Standards Council, National Fire Protection Association, 1 Batterymarch Park, P.O. Box 9101, Quincy, MA 02269-9101.

A statement, written or oral, that is not processed in accordance with Section 16 of the Regulations Governing Committee Projects shall not be considered the official position of NFPA or any of its Committees and shall not be considered to be, nor be relied upon as, a Formal Interpretation.

Users of this document should consult applicable federal, state and local laws and regulations. NFPA does not, by the publication of this document, intend to urge action that is not in compliance with applicable laws, and this document may not be construed as doing so.

Policy Adopted by NFPA Board of Directors on December 3, 1982

The Board of Directors reaffirms that the National Fire Protection Association recognizes that the toxicity of the products of combustion is an important factor in the loss of life from fire. NFPA has dealt with that subject in its technical committee documents for many years.

There is a concern that the growing use of synthetic materials may produce more or additional toxic products of combustion in a fire environment. The Board has, therefore, asked all NFPA technical committees to review the documents for which they are responsible to be sure that the documents respond to this current concern. To assist the committees in meeting this request, the Board has appointed an advisory committee to provide specific guidance to the technical committees on questions relating to assessing the hazards of the products of combustion.

Licensing Provision—This document is copyrighted by the National Fire Protection Association (NFPA).

1. Adoption by Reference—Public authorities and others are urged to reference this document in laws, ordinances, regulations, administrative orders, or similar instruments. Any deletions, additions, and changes desired by the adopting authority must be noted separately. Those using this method are requested to notify the NFPA (Attention: Secretary, Standards Council) in writing of such use. The term "adoption by reference" means the citing of title and publishing information only.

2. Adoption by Transcription—A. Public authorities with lawmaking or rule-making powers only upon written notice to the NFPA (Attention: Secretary, Standards Council), will be granted a royalty-free license to print and republish this document in whole or in part, with changes and additions, if any, noted separately, in laws, ordinances, regulations, administrative orders, or similar instruments having the force of law, provided that: (1) due notice of NFPA's copyright is contained in each law and in each copy thereof; and (2) that such printing and republication is limited to numbers sufficient to satisfy the jurisdiction's lawmaking or rule-making process. B. Once this NFPA Code or Standard has been adopted into law, all printings of this document by public authorities with lawmaking or rule-making powers or any other persons desiring to reproduce this document or its contents as adopted by the jurisdiction in whole or in part, in any form, upon written request to NFPA (Attention: Secretary, Standards Council), will be granted a nonexclusive license to print, republish, and vend this document in whole or in part, with changes and additions, if any, noted separately, provided that due notice of NFPA's copyright is contained in each copy. Such license shall be granted only upon agreement to pay NFPA a royalty. This royalty is required to provide funds for the research and development necessary to continue the work of NFPA and its volunteers in continually updating and revising NFPA standards. Under certain circumstances, public authorities with lawmaking or rule-making powers may apply for and may receive a special royalty where the public interest will be served thereby.

3. Scope of License Grant—The terms and conditions set forth above do not extend to the index to this document.

(For further explanation, see the Policy Concerning the Adoption, Printing, and Publication of NFPA Documents, which is available upon request from the NFPA.)

Statement on NFPA Procedures

This material has been developed under the published procedures of the National Fire Protection Association, which are designed to assure the appointment of technically competent Committees having balanced representation. While these procedures assure the highest degree of care, neither the National Fire Protection Association, its members, nor those participating in its activities accept any liability resulting from compliance or noncompliance with the provisions given herein, for any restrictions imposed on materials or processes, or for the completeness of the text.

NFPA has no power or authority to police or enforce compliance with the contents of this document, and any certification of products stating compliance with requirements of this document is made at the peril of the certifier.

Copyright © 1994 NFPA, All Rights Reserved

NFPA 1221
Standard for the
Installation, Maintenance, and Use of
Public Fire Service Communication Systems
1994 Edition

This edition of NFPA 1221, *Standard for the Installation, Maintenance, and Use of Public Fire Service Communication Systems*, was prepared by the Technical Committee on Public Fire Service Communications and acted on by the National Fire Protection Association, Inc., at its Annual Meeting held May 16–18, 1994, in San Francisco, CA. It was issued by the Standards Council on July 14, 1994, with an effective date of August 5, 1994, and supersedes all previous editions.

The 1994 edition of this document has been approved by the American National Standards Institute.

Origin and Development of NFPA 1221

This standard is the latest in a long series of editions dating back to 1898. Originally, it was part of a general standard on signaling systems, but the material on municipal fire alarm systems was separated from the general standard in 1911. This standard has been revised and reissued in editions dated 1904, 1911, 1926, 1934, 1940, 1941, 1946, 1948, 1949, 1950, 1952, 1954, 1955, 1956, 1962, 1963, 1964, 1967, 1973, 1975, 1978, 1980, 1984, 1988, 1991, and 1994.

Technical Committee on Public Fire Service Communications**Evan E. Stauffer, Chair**

Naval Facilities Engr Command, PA

Sidney M. Earley, TLC Systems, MA**Emerson B. Fisher**, King-Fisher Co., IL**Thomas B. Kochheiser**, Cape Coral City Fire Dept., FL
Rep. Int'l Assn. of Fire Chiefs**Robert E. Lapham**, Signal Communications Corp., MA**James P. Stanton**, Kensington Volunteer Fire Dept., MD**Timothy G. Stillman**, Ft. Lauderdale, FL**Lawrence M. Stoddard**, EG & G Rocky Flats, CO**Edward F. Straw**, ISO Commercial Risk Services Inc., GA**Donald C. Tully**, Buena Park Fire Dept., CA**Richard J. Turgeon**, Nashua Fire Dept., NH

Rep. Int'l Municipal Signal Assn.

Alternates**Douglas M. Aiken**, Manchester Fire Dept., NH

(Alt. to R. J. Turgeon)

Dennis N. Gage, ISO Commercial Risk Services Inc., NJ

(Alt. to E. F. Straw)

George R. Meister, City of Port Orange Fire/Rescue Dept., FL

(Alt. to T. B. Kochheiser)

Stephen Verbil, Town of Fairfield, CT

(Alt. to APCO Rep.)

William J. Baden, NFPA Staff Liaison

This list represents the membership at the time the Committee was balloted on the text of this edition. Since that time, changes in the membership may have occurred.

NOTE: Membership on a Committee shall not in and of itself constitute an endorsement of the Association or any document developed by the Committee on which the member serves.

Committee Scope: This Committee shall have primary responsibility for documents relating to the operation, installation, and maintenance of public fire service communications systems.

Contents

Chapter 1 Fundamentals	1221- 4		
1-1 Scope	1221- 4	3-7 Radio Dispatching — Portable Equipment	1221-21
1-2 Management	1221- 4	3-8 Telephone Dispatch Systems — Communication Center	1221-21
1-3 Definitions	1221- 4	3-9 Telephone Dispatch Systems — Fire Stations	1221-22
Chapter 2 General Requirements — Communication Center and Fire Stations	1221- 6	3-10 Commercial Telephones — Fire Stations	1221-22
2-1 Communication Center (Primary or Subsidiary)	1221- 6	3-11 Other Alerting Facilities — Volunteer and Off-Shift Fire Fighters	1221-22
2-2 Fire Stations	1221-11	3-12 Computer-Aided Dispatching (CAD) Systems	1221-23
Chapter 3 Dispatching Systems	1221-12	Chapter 4 Referenced Publications	1221-27
3-1 Fundamental Requirements of Fire Alarm Dispatching Systems	1221-12	Appendix A Explanatory Material	1221-27
3-2 Wired Dispatch Systems — Communication Center	1221-16	Appendix B	1221-30
3-3 Wired Dispatch Systems — Fire Stations	1221-18	Appendix C Referenced Publications	1221-32
3-4 Radio Dispatch Systems — Communication Center	1221-19	Index	1221-33
3-5 Radio Dispatch Systems — Fire Stations	1221-20		
3-6 Radio Dispatching — Mobile Equipment	1221-20		

NFPA 1221
Standard for the
Installation, Maintenance, and
Use of Public Fire Service
Communication Systems
1994 Edition

NOTICE: An asterisk (*) following the number or letter designating a paragraph indicates explanatory material on that paragraph in Appendix A.

A dagger (†) following the number or letter designating a paragraph indicates explanatory figures for that paragraph in Appendix B.

Information on referenced publications can be found in Chapter 4 and Appendix C.

Chapter 1 Fundamentals

1-1 Scope.

1-1.1 This standard covers the installation, maintenance, and use of public fire service communications systems and facilities. This standard is neither intended as a design specification nor as an instruction manual.

1-1.2 These systems and facilities include, but are not limited to, public reporting, dispatching, telephone, and both two-way and microwave radio systems that fulfill two principal functions: that of receiving fire alarms or other emergency calls from the public and that of retransmitting these alarms and emergency calls to fire companies and other interested agencies.

1-1.3 Fire alarm systems on private premises from which signals are received directly or indirectly by the communication center are covered by NFPA 72, *National Fire Alarm Code*.

1-1.4 If a system or device having materials, methods of operation, or forms different from those detailed in this standard is examined and tested by the authority having jurisdiction according to the intent of the requirements of this standard and is found satisfactory, it shall be judged to be equivalent.

1-2 Management. The system shall be under the control of a responsible jurisdiction employee.

1-3 Definitions. When the words defined in this section are used in this standard, they have the meanings described below.

Alarm. A signal or message from a person or device indicating the existence of a fire, medical emergency, or other situation that requires fire department action.

Approved.* Acceptable to the authority having jurisdiction.

Authority Having Jurisdiction.* The organization, office, or individual responsible for approving equipment, an installation, or a procedure.

Baud. Measurement of data transmission rates expressed as "bits per second" or bps.

CAD (Computer-Aided Dispatching). A dispatching method or process in which a computer and its associated terminal(s) is utilized to provide relative dispatch data (e.g., running assignments, address locations, equipment status, utility locations, special hazards, etc.) to the concerned dispatcher(s)/operator(s).

Certification. A formal program of related instruction and testing as provided by a recognized organization or the authority having jurisdiction.

Channel.

(a) *Electric Communication.*

- (1) A single path for transmitting electric signals, usually as distinct from other parallel paths, or
- (2) A band of frequencies.

NOTE: The word *path* is to be interpreted in a broad sense to include separations by frequency division or time division. The term *channel* can signify either a one-way path, providing transmission in one direction only, or a two-way path, providing transmission in two directions.

(b) *Data Transmission.* In electric communication,

- (1) A single path for transmitting electric signals, usually as distinct from other parallel paths, or
- (2) A band of frequencies.

NOTE: The word *path* is to be interpreted in a broad sense to include separation by frequency division or time division. The term *channel* can signify either a one-way path, providing transmission in one direction only, or a two-way path, providing transmission in two directions. (See duplex operation: radio channel.)

Channel, Radio. See radio channel.

Circuit.* The conductor, or radio channel, and associated equipment used to perform a definite function in connection with an alarm system. Specific types of circuits are defined below.

(a) *Dispatch Circuit.* A circuit over which alarms are retransmitted automatically or manually from the communication center to fire stations (formerly called *alarm circuits*).

(b) *Local Circuit.* A circuit upon which the receipt of alarms over box circuits or retransmission of alarms over dispatch circuits does not depend.

(c) *Tie Circuit.* A circuit connecting a communication center and a subsidiary communication center.

Common Battery. The battery used to power recorders, transmitters, relays, other communication center equipment and, if used, subsidiary communication center equipment. This battery can also be used with Form 4 power supply. *Common battery* is also termed *local* or *master*.

Communication Center. A building or portion of a building specifically configured for the primary purpose of providing emergency communication services to one or more public safety agencies under the authority(ies) having jurisdiction. This facility shall apply to all areas necessary for operation, domicile, and the installation of necessary equipment.

Converter. Any mechanical or electrical device that changes alternating current to direct current or changes

direct current voltage to a higher or lower voltage, the latter commonly referred to as a direct current to direct current converter.

CPU. Central processing unit of the computer system. The CPU contains the main storage, arithmetic unit, and special register groups.

CRT. A general term used to abbreviate "Cathode Ray Tube" but as used in this standard is considered to include other display devices providing comparable functional capabilities.

Duplex Channel. See duplex operation.

Duplex Operation.

(a) *General.* The operation of transmitting and receiving apparatus at one location in conjunction with associated transmitting and receiving equipment at another location, the processes of transmission and reception being concurrent.

(b) *Radio Communication (Two-Way Radio Communication Circuit).* The operation utilizing two radio-frequency channels, one for each direction of transmission, in such a manner that intelligence can be transmitted concurrently in both directions.

Dynamotor. A machine that combines both motor and generator action in one magnetic field, either with no armatures or with one armature having two separate windings.

Emergency. Any condition endangering, or thought to be endangering, life or property.

Engine-Driven Generator. A generator driven by an internal combustion engine.

Fire Station. A building occupied by mobile apparatus of the fire department. It might also include locations where other emergency equipment is housed.

Frequency (Radio). A frequency useful for radio transmission.

NOTE: The present practicable limits of radio frequency are roughly 10 kilohertz to 100,000 megahertz. Within this frequency range, electromagnetic radiation can be detected and amplified as an electric current at the wave frequency.

Frequency Periodic Function (wherein time is the independent variable).

(a) *General.* The number of periods per unit time.

(b) *Radio Wave Propagation.* Of a periodic wave, the number of identical cycles per second.

Inverter. Any mechanical or electrical device that changes direct current to alternating current.

Jurisdiction. Any government unit, such as a federal agency, state, county, city, town, or fire protection district.

Labeled. Equipment or materials to which has been attached a label, symbol, or other identifying mark of an organization that is acceptable to the authority having jurisdiction and concerned with product evaluation that maintains periodic inspection of production of labeled equipment or materials and by whose labeling the manufacturer indicates compliance with appropriate standards or performance in a specified manner.

Listed.* Equipment or materials included in a list published by an organization acceptable to the authority having jurisdiction and concerned with product evaluation that maintains periodic inspection of production of listed equipment or materials and whose listing states either that the equipment or material meets appropriate standards or has been tested and found suitable for use in a specified manner.

Modem (Modulator Demodulator Unit). A device that converts data that is compatible with data-processing equipment to a form that is compatible with transmission facilities, and vice-versa.

Motor-Generator. A machine that consists of a generator driven by an electric motor.

Operations Room. The room in the communication center where alarms are received and retransmitted.

Operator. A person or persons certified to receive or retransmit an alarm.

Power Source. The power obtained from the utility distribution system, an engine-driven generator, or a battery.

Power Supply. A device that receives its input power from a power source and converts the input power to the alternating current or direct current voltage(s) required to operate the system.

Power Supply, Uninterruptible (UPS). A system designed to provide power, without delay or transients, during any period when the normal power supply is incapable of performing acceptably.

Protocol.

(a) *Data Communication.* A formal set of conventions governing the format and relative timing of message exchange between two communications terminals.

(b) *Software.*

(1) A set of conventions or rules that governs the interactions of processes or applications within a computer system or network.

(2) A set of rules that governs the operation of functional units to achieve communication.

Public Reporting System. A system of alarm initiating devices, receiving equipment, and connecting circuits (other than a public telephone network) used to transmit alarms from street locations to the communication center.

(a) *Type A — Public Reporting System.* A system in which an alarm from a fire alarm box is received and is retransmitted to fire stations either manually or automatically.

(b) *Type B — Public Reporting System.* A system in which an alarm from a fire alarm box is automatically transmitted to fire stations and, if used, to outside alerting devices.

Radio Channel. A band of frequencies of a width sufficient to permit its use for radio communication.

NOTE: The width of the channel depends on the type of transmissions and the tolerance for the frequency of emission. Normally allocated for radio transmission in a specified type of service or by a specified transmitter.

Radio Circuit. A means for carrying out one radio communication at a time in either or both directions between two points. (See radio channel.)

Rectifier. A device without moving parts that changes alternating current to direct current.

Repeater. A combination of apparatus for receiving either one-way or two-way communication signals and delivering corresponding signals that are amplified, reshaped, or both.

Shall. Indicates a mandatory requirement.

Should. Indicates a recommendation or that which is advised but not required.

Solar Cell. A device that converts light or other radiant energy into electrical energy.

Structured Programming. A modular approach to program development that emphasizes stepwise refinement, simple control structures, and short one-entry point/one-exit point modules.

Subsidiary Communication Center or "Subsidiary." The building used to house a part of the control equipment of a fire alarm system.

Supervision. The automatic monitoring of circuits and other system components to reveal defects or faults that would interfere with reception or transmission of an alarm.

Supervisor. A person or persons certified to manage all operational aspects of a communication center.

Terminal. Used in this standard in relation to CAD systems/networks, the word *terminal* refers to an electronic device that combines a keyboard and CRT, allowing an interchange of information between a dispatcher/operator and one or more computers in the system/network.

Trouble Signal. A signal that indicates an abnormal condition.

Trunk Line. A telephone line or channel between telephone central offices or switching devices, including lines between communication center.

UPS (Uninterruptible Power System). See power supply, uninterruptible (UPS).

Chapter 2 General Requirements — Communication Center and Fire Stations

2-1 Communication Center (Primary or Subsidiary).

2-1.1 Location.

2-1.1.1 If the building is located within 150 ft (46 m) of another structure, special attention shall be given to guard against damage from such exposure by protecting openings and by constructing the roof to resist damage that might be caused by falling walls.

2-1.1.2 A communication center shall not be located below grade unless the facility is specifically designed for such a location. The lowest floor elevation shall be above the 100-yr flood plain prediction.

2-1.1.3 Each jurisdiction shall maintain an alternate communication facility that is capable, when staffed, of performing the emergency functions provided at the communication center. The facility shall be separated geographically from the primary communication center

at a distance satisfactory to ensure the viability of the alternate facility concept.

2-1.2 Construction.

2-1.2.1 Buildings housing communication centers shall be Type I, Type II, or Type III construction as defined by NFPA 220, *Standard on Types of Building Construction*. The building shall have a Class A roof as defined by NFPA 256, *Standard Methods of Fire Tests of Roof Coverings*.

2-1.2.2 When the building is also occupied for purposes other than fire communication, the communication center shall be separated from the other portions of the building by vertical and horizontal separations having a fire resistance rating of at least 2 hours. Openings shall be protected by listed, self-closing fire doors or other assemblies having a fire resistance rating at least equal to that of the construction but with not less than a 1½-hour fire rating. If spaces adjoining the communication center are occupied by Ordinary Hazard Occupancies, as defined in NFPA 13, *Standard for the Installation of Sprinkler Systems*, they shall be provided with an automatic fire detection and modification system conforming to NFPA 72, *National Fire Alarm Code*, and NFPA 75, *Standard for the Protection of Electronic Computer/Data Processing Equipment*. If the adjoining spaces are occupied by Extra Hazard Occupancies as defined in NFPA 13, *Standard for the Installation of Sprinkler Systems*, they shall be provided with an automatic sprinkler system that shall be completely supervised at the communication center. The sprinkler system and its supervisory service shall conform to NFPA 13, *Standard for the Installation of Sprinkler Systems*.

2-1.2.3 Communication center interior finish material, as defined by NFPA 101®, *Life Safety Code*®, shall have a flame spread rating of 25 or less and a smoke development rating of 50 or less, when tested in accordance with NFPA 255, *Standard Method of Test of Surface Burning Characteristics of Building Materials*.

2-1.2.4 When the design of a new communication center or a major remodeling of an existing center requires one or more full-time, on-duty operators, the center shall be equipped with a toilet and lunch area directly accessible to the operations room.

2-1.2.5 The communication center and other buildings housing essential operating equipment shall be protected against damage due to vandalism and civil disturbances. In communication centers constructed on the first floor of a building, with the floor at exterior grade level, direct exterior windows shall not be permitted. The door opening shall be protected by not less than a 1-hour listed, self-closing fire door assembly.

2-1.2.6 Entry to the communication center shall be restricted to authorized persons only. Entryways leading directly from the exterior shall be protected by two doors and a vestibule.

2-1.2.7 Entry to the communication center shall be restricted to authorized persons only. Entryways leading directly from the exterior shall be protected by two doors and a vestibule.

2-1.3 Utilities.

2-1.3.1 Warm air heating, ventilating, and air conditioning shall be by independent systems serving only the communication center.

2-1.3.2 No main utility services shall pass through those portions of the communication center where essential equipment is installed or operational functions are performed.

2-1.4 Fire Protection.

2-1.4.1 The communication center shall be provided with fire extinguishers meeting the requirements of NFPA 10, *Standard for Portable Fire Extinguishers*, and not less than two such extinguishers shall be required.

2-1.4.2 The communication center shall be provided with an automatic fire detection, alarm, and notification system in accordance with NFPA 72, *National Fire Alarm Code*. Evacuation signals shall not interfere with communications operations. The alarm system shall be monitored in the operations room.

2-1.4.3 The building housing the communication center and the communication center shall be protected throughout with an approved, automatic fire sprinkler system complying with NFPA 13, *Standard for the Installation of Sprinkler Systems*. The sprinkler system shall be supervised in accordance with NFPA 72, *National Fire Alarm Code*, and monitored in the operations room.

2-1.4.3.1 Where applicable, electronic computer/data processing equipment shall be protected in accordance with NFPA 75, *Standard for the Protection of Electronic Computer/Data Processing Equipment*.

2-1.4.4* In the event of a fire in the communication center, the facility shall be capable of continuous operation for sufficient time to enable transfer of operations to any alternate communication center capable of continuous operation.

2-1.5 Emergency Lighting.

2-1.5.1 The communication center shall be equipped with emergency lighting that shall be immediately placed in service upon a power failure and shall be independent of the power source normally used for lighting purposes. Illuminations shall be great enough to permit all necessary operations. [See Section 700-12(b)(f), NFPA 70, *National Electrical Code*[®].]

2-1.5.2 In addition to the requirement of 2-1.5.1, the communication center shall be equipped with not less than one self-charging battery pack lantern that lights automatically when power is interrupted.

2-1.6 Power.

2-1.6.1 General.

2-1.6.1.1 Under all conditions, two sources of power shall be provided for the operation of the communication network and its supporting related systems and equipment.

2-1.6.1.2 Power circuits, together with their associated motors, generators, rectifiers, transformers, fuses, and controlling devices, shall be installed in accordance with the requirements of NFPA 70, *National Electrical Code*.

2-1.6.1.3 The conductors of the power supply circuit shall be connected to the line side of the main service of a commercial light or power supply circuit, or to the main conductors of an isolated power plant located on the premises, except as permitted in 2-1.6.1.4. The circuit disconnecting means shall be installed so that it is accessible only to authorized personnel.

2-1.6.1.4 Power shall be permitted to be obtained from the load side of the main disconnect switch only where buildings are used exclusively for the housing of fire alarm and other emergency facilities.

2-1.6.1.5 Circuit protection, enclosed in a locked or sealed cabinet located immediately adjacent to the point of connection to the light and power conductors, shall be provided in series with each ungrounded conductor.

2-1.6.1.6 Power supply circuit conductors shall be installed in independent conduits not used for any other circuit conductors, from the disconnect switches to the current-consuming devices. The conductors of this section shall not be routed over any heat-producing equipment, including a distribution transformer or an engine-driven generator set.

2-1.6.2 Power Source. The following methods of obtaining two sources of power for the communication center shall be considered acceptable:

(a)† One circuit from a utility distribution system and a second from an engine-driven generator and a standby storage battery having a 4-hour capacity. All standby storage batteries incorporated into a power source network shall be equipped with suitable chargers (float or trickle).

(b)† Two circuits from separate utility distribution systems, so serviced or connected that normal supply to one will not be affected by trouble that would put the other out of service. This would require supply from two building services on entirely separate distribution networks from independent generating stations.

(c)† Two engine-driven generators with one unit supplying normal system power and the other unit serving as standby with facilities to apply its power to the line within 30 seconds. A standby storage battery having a 4-hour capacity shall be provided. All standby storage batteries incorporated into a power source network shall be equipped with suitable chargers (float or trickle). If two engine-driven generators are used as a second source of power, the fire alarm system 4-hour battery shall be permitted to be omitted.

2-1.6.3 Power Supply.

2-1.6.3.1 Local circuits at the communication center shall be supplied either in common with box circuits or dispatch circuits or by a separate power source. The source of power for local circuits required to operate the essential features of the system shall be supervised.

2-1.6.3.2 Visual and audible means of indicating a 15 percent or greater reduction of normal power supply (rated voltage) shall be provided.

2-1.6.4 Rectifiers, Converters, Inverters, and Motor-Generators.

2-1.6.4.1 Rectifiers shall be supplied through an isolating transformer taking energy from a circuit not exceeding 250 volts.

2-1.6.4.2 Complete, ready-to-use spare units and spare parts shall be available in reserve.

2-1.6.4.3 One spare rectifier shall be provided for each 10 required for operation but in no case shall less than one be provided.

2-1.6.4.4 Leads from rectifiers or motor-generators, with storage battery floating, shall have fuses rated at not less than 1 ampere and not more than 200 percent of maximum connected load. Where not provided with battery floating, the fuse shall be not less than 3 amperes.

2-1.6.5 Engine-Driven Generator Sets.

2-1.6.5.1 The provisions of this section shall apply to generators driven by internal combustion engines.

2-1.6.5.2 The installation of engine-driven generator sets shall conform to the provisions of NFPA 37, *Standard for the Installation and Use of Stationary Combustion Engines and Gas Turbines*, and NFPA 110, *Standard for Emergency and Standby Power Systems*, except as restricted by the provisions of this section.

2-1.6.5.3 The engine-driven generator set shall be located in an adequately ventilated cutoff area of the building housing the communication center equipment. The area housing the unit shall be used for no other purpose except storage of spare parts or equipment. Exhaust fumes shall be discharged directly outside the building.

2-1.6.5.4 Liquid fuel shall be stored outside the communication center in accordance with NFPA 37, *Standard for the Installation and Use of Stationary Combustion Engines and Gas Turbines*, and gravity feed shall not be used. Sufficient fuel shall be available for 24 hours of operation at full load.

2-1.6.5.5 Liquefied petroleum gas and natural gas installations shall meet the requirements of NFPA 54, *National Fuel Gas Code*, and NFPA 58, *Standard for the Storage and Handling of Liquefied Petroleum Gases*.

2-1.6.5.6 The unit, as a minimum, shall be of sufficient capacity to supply power to operate all fire alarm facilities and emergency lighting of the operating rooms or communication building.

2-1.6.5.7 A separate storage battery on automatic float charger shall be provided for starting the engine-driven generator.

2-1.6.6 Batteries.

2-1.6.6.1 Batteries shall be of the storage type; primary batteries (dry cells) shall not be used. All cells shall be of the spillproof type, adequately vented and, as applicable, equipped with explosion-inhibiting caps. Lead-acid batteries shall be in jars of glass or other suitable transparent material; other types of batteries shall be in containers suitable for the purpose.

2-1.6.6.2 Batteries shall be located in the same building as the operating equipment, preferably on the same floor, and shall be readily accessible for maintenance and inspection. The battery space shall not be located below grade unless the structure is specifically designed for such a location and shall be ventilated to prevent accumulation of explosive gas mixtures.

2-1.6.6.3 Batteries shall be mounted to provide effective insulation from the ground and from other batteries. The mounting shall be suitably protected against deterioration, and consideration shall be given to stability, especially in geographic areas subject to seismic disturbance.

2-1.6.6.4 Battery leads of both polarities shall not be in the same conduit, tubing, or cable between the battery terminals and fuses.

2-1.7 Electrical Wiring.

2-1.7.1 Circuit Conductors — General.

2-1.7.1.1 Wires shall be terminated to provide good electrical conductivity and to prevent breaking from vibration or stress.

2-1.7.1.2 Circuit conductors on terminal racks shall be identified and isolated from conductors of other systems wherever possible and shall be suitably protected from mechanical damage.

2-1.7.1.3 All conduits or ducts entering buildings from underground duct systems shall be through an approved weatherhead or suitable sleeves slanting upward and inward. Drip loops shall be formed on wires outside of buildings.

2-1.7.2 Wiring inside Buildings.

2-1.7.2.1 At the communication center, conductors shall extend as directly as possible to the operations room in conduits, ducts, shafts, raceways, or overhead racks and troughs of a type of construction providing protection against fire and mechanical damage.

2-1.7.2.2 All conductors inside buildings shall be in conduit, electrical metallic tubing, metal molding, or raceways. Installation shall be in accordance with NFPA 70, *National Electrical Code*.

2-1.7.2.3 Conductors shall have an approved insulation; the insulation or other outer covering shall be flame retardant and moisture resistant.

2-1.7.2.4 Conductors shall be installed as far as possible without joints. Splices shall be permitted only in junction or terminal boxes. Wire terminals, splices, and joints shall conform with NFPA 70, *National Electrical Code*.

2-1.7.2.5 Conductors bunched together in a vertical run connecting two or more floors shall have a flame-retardant covering sufficient to prevent the carrying of fire from floor to floor. This requirement shall not apply if the conductors are encased in a metallic conduit or located in a fire-resistive shaft having stops at each floor.

2-1.7.2.6 Where cables or wirings are exposed to unusual fire hazards, they shall be properly protected.

2-1.7.2.7 Cable terminals and cross-connecting facilities shall be located either in or adjacent to the operations room.

2-1.7.2.8 Where signal conductors and electrical light and power wires are run in the same shaft, they shall be separated by at least 2 in. (50 mm), or either system shall be encased in a noncombustible enclosure.

2-1.8 Staffing.

2-1.8.1 Number of Operators.

2-1.8.1.1 The number of operators shall be as follows:

(a) For jurisdictions receiving 600 or more alarms per year, at least one operator shall be on duty in the communication center. The number of operators shall be sufficient to affect the prompt receipt and processing of and other request for fire department services as follows:

(1) Ninety-five percent of alarms shall be answered within 30 seconds, and in no case shall the initial operator's response to an alarm exceed 60 seconds.

(2) The dispatch of the appropriate fire services shall be made within 60 seconds after the completed receipt of an emergency alarm.

(3) When three or four operators are required to be on duty to meet the performance criteria of 2-1.8.1.1(a)(1) and (2), at least one supervisor shall be on duty in the communication center.

(4) When five or more operators are required to be on duty to meet the performance criteria of 2-1.8.1.1(a)(1) and (2), then the supervisor on duty shall be in the operations room.

(b) For jurisdictions receiving fewer than 600 alarms per year, alarms not retransmitted automatically shall be received and transmitted to the fire force by an operator on duty for the purpose as follows:

(1) A specifically designated operator, an employee of the local telephone company; or

(2) A member of another jurisdictional agency; or

(3) The house watch at a fire station, with facilities for transfer of service to another jurisdictional agency if the house watch responds to fires.

(4) In all cases, the performance requirements of 2-1.8.1.1(a)(1) and (2) shall apply.

2-1.8.1.2 The operators shall be at the communication center and shall be capable of operating and testing the system unless other qualified persons are on duty and assigned to test the system.

2-1.8.2 Qualifications.

2-1.8.2.1 Operators shall be in good health and free from disabling physical and mental defects that would affect their ability to efficiently handle the duties assigned. They shall be temperamentally suited to the position, including being able to remain calm and take decisive action during emergencies, to remain alert during periods of inactivity and when carrying out normal repetitive operations, and to work harmoniously with other persons.

2-1.8.2.2 Operators shall be familiar with general fire department operations and shall have access to information regarding the locations of streets; important structures, including schools, hospitals, and other buildings with a high life hazard; and congested or hazardous areas.

2-1.8.2.3 Operators shall have a working knowledge of the fire alarm system and any 9-1-1 system and shall be capable of making the prescribed tests. They shall be familiar with rules and regulations relating to equipment use, including those of the Federal Communications Commission pertaining to emergency services' use of radio.

2-1.9 Operating Practices.

2-1.9.1* Emergency calls, however received, shall be appropriately recorded and tabulated to indicate the origin of the call.

2-1.9.2 In cases where the communication center is not the primary answering agency for fire calls, the answering agency shall transfer the call directly to the fire alarm operator and remain on the line until assured that the transfer is effected. This transfer procedure shall be used instead of relaying the information to the operator.

2-1.9.3 All emergency alarms, including requests for multiple alarms, shall be transmitted to the proper fire department companies over the required dispatch circuit or circuits conforming to Chapter 3.

2-1.9.4 An accurate indication of the status of all fire companies (e.g., in the station available for response, out of service at a fire, out of service due to other reasons) shall be readily available to the operators at all times.

2-1.9.5 Dispatch of apparatus in response to emergency calls shall be recorded. Records shall indicate companies and supervisory officers for fires and subsequent alarms, time of acknowledgment by companies, time of arrival at scene, and time back in service.

2-1.9.6 An audible warning or alerting signal, typically a distinctive tone(s), shall precede any alarm transmitted by voice.

2-1.9.7 The first fire company arriving at the location of the alarm shall give a brief preliminary report on conditions observed to the communication center.

2-1.9.8 Fire communication equipment shall be restored to normal condition as promptly as possible after each alarm for which the equipment functioned.

2-1.9.9 A report of operations summarizing important statistics shall be prepared annually.

2-1.10 Equipment Testing.

2-1.10.1 General.

2-1.10.1.1 Testing facilities shall be installed at the communication center and each subsidiary communication center, if used.

Exception: If satisfactory to the authority having jurisdiction, those facilities for systems leased from a nonmunicipal organization that might be located elsewhere.

2-1.10.1.2 Tests and inspections shall be made at intervals not less frequent than those specified in this standard.

2-1.10.2 Power.

2-1.10.2.1 An emergency power source other than batteries shall be operated to supply the system for a continuous period of 1 hour at least weekly. This test shall require simulated failure of the normal power source.

2-1.10.2.2 Periodic tests shall be performed to ensure that the batteries are capable of supplying the system with power when required to do so. The required tests and the maximum intervals at which they are to be performed shall be as follows:

Table 2-1.10.2.2(a) Required Tests For Lead-Acid Batteries

Test	Maximum Interval
Measure Float Voltage	
Of entire battery or a pilot cell	1 week
Of each cell	3 months
Measure Specific Gravity	
Of a pilot cell	6 weeks
Of each cell	6 months
Discharge for 2 hours	1 year
Clean and Inspect	3 months
Calibrate Meters	1 year

To maximize battery life, the battery voltage for lead-acid cells shall be maintained within the limits shown in the table below:

Float Voltage	High Gravity Battery (Lead Calcium)	Low Gravity Battery (Lead Antimony)
Maximum	2.25 volts/cell	2.17 volts/cell
Minimum	2.20 volts/cell	2.13 volts/cell
High Rate Voltage	2.33 volts/cell	

NOTE: High and low gravity voltages are (+)0.07 volts and (-)0.03 volts, respectively.

Table 2-1.10.2.2(b)* Required Tests for Nickel Cadmium Batteries

Test	Maximum Interval
Measure Float Voltage (1.42 volts per cell nominal)	
Of entire battery	3 months
Of each cell	1 year
Check State of Charge	6 months
Discharge for 2 hours	1 year
Clean and Inspect	3 months
Calibrate Meters	1 year

To maximize battery life, the battery shall be charged as follows:

Float Voltage	1.42 volts/cell \pm 0.01 volts
High Rate Voltage	1.58 volts/cell + 0.07 - 0.00 volts

2-1.11 Management and Maintenance.

2-1.11.1 All systems shall be under the control of a responsible jurisdictional employee. When maintenance is provided by an organization or person other than the municipality or its employees, complete written records of the installation, maintenance, test, and extension of the system shall be forwarded to the responsible employee as soon as possible.

2-1.11.2 A complete record shall be kept by the municipality of all test and alarm signals, all circuit interruptions and observations or reports of apparatus failure or derangements, and all seriously abnormal or defective circuit conditions indicated by test or inspection; these records shall include the date and time of occurrence. Notice of failure and restoration of service shall be made immediately to the responsible municipal employee.

2-1.11.3 Maintenance by an organization or person other than the jurisdiction or a jurisdiction employee shall be by written contract, guaranteeing performance acceptable to the authority having jurisdiction.

2-1.11.4 All equipment shall be accessible to the authority having jurisdiction for the purpose of maintenance.

2-1.12 Records.

2-1.12.1 Complete records, sufficient to ensure reliable operation of all alarm system functions, shall be maintained in a satisfactory manner.

2-1.12.2 Complete records of test and alarm and dispatch signals, all circuit interruptions and observations or reports of apparatus failures or derangements, and all seriously

abnormal or defective circuit conditions indicated by test or inspection shall be kept by the jurisdiction; these records shall include the date and time of all occurrences.

2-1.12.3 Where a combination of leased/owned facilities exists, resources required to be maintained by the lessor for the jurisdiction shall be specified.

2-1.12.4* A report of operations summarizing important statistics shall be prepared annually.

2-1.12.5 Records of wired circuits (box and dispatch) shall include outline plans showing terminals and box sequence; diagrams of office wiring; materials used, including trade name, manufacturer, and year of purchase or installation.

2-1.12.6 Emergency generating equipment periodic test records shall include date and time; fuel, electrical, coolant, and exhaust system conditions; and operating time.

2-1.13 Telephone Receiving Equipment.

2-1.13.1 Commercial Telephone.

2-1.13.1.1 General.

(a) The provisions of this section apply to the facilities necessary to receive alarms transmitted by citizens using the commercial telephone system.

(b) The provisions of this section shall apply regardless of whether other reporting systems are provided.

2-1.13.1.2 Directory Listing.

(a) A specific telephone number shall be assigned for fire alarm emergency service with a separate number assigned for normal fire department business. Telephone directory listings shall be as follows:

(1) On the inside front cover of the white pages directory:

FIRE (Symbol optional) (FIRE NUMBER)

In the white pages directory:

FIRE DEPARTMENT

To report a fire (FIRE NUMBER)

Nonfire purposes (business number)

(2) The fire department listing shall also appear in the directory under the name of the municipality.

(3) If the directory covers an area that is protected by more than one fire department or fire protection district, each such department or district shall be listed as outlined above.

(4) Telephones installed in fire stations shall not be listed in the telephone directory.

(b) Where suitable arrangements have been made for the receipt and handling of all emergency calls for fire, police, ambulance, etc., at a single communication center, such as through the use of the national emergency number 9-1-1, the directory listing shall be appropriate.

2-1.13.1.3 Equipment and Operations.

(a) At the communication center, at least one telephone line shall be assigned for fire alarm emergency calls; in larger municipalities additional lines shall be assigned. The number of lines shall depend on the traffic handled. Additional telephone lines shall be provided for the business number as required.

(b) In addition to the above, at least one unlisted line shall be provided.

(c) For manual switching-type telephone systems, connections to assigned lines shall be made only for reporting. Where dial system service is used, provisions shall be made for automatic selection of the assigned emergency lines first, and progressing to the general business lines when the emergency number is dialed, but the assigned lines shall not be made responsive to a dialing of the general business numbers.

(d) In cases where the communication center is not the primary answering agency for fire calls, the answering agency shall transfer the call directly to the fire alarm operator and remain on the line until assured that the transfer is effected. This transfer procedure shall be used instead of relaying the information to the operator.

(e) Fire calls received by telephone shall be recorded automatically, and the receiving equipment shall be provided with capability of instant playback. Nonvoice alarms shall be graphically recorded.

(f) A voice recording facility shall be provided for each operator handling incoming alarms in order to eliminate the possibility of interference.

(g) Facilities shall be provided that will automatically record the time of receipt of each alarm.

(h) If an incoming telephone call is not answered within 60 seconds, when only one operator is on duty, a trouble indication shall be automatically transmitted to a location acceptable to the authority having jurisdiction.

(i) Where private fire alarm equipment, arranged to automatically transmit a signal to the fire department over commercial telephone facilities, is in use, a separate unlisted telephone line(s) shall be used to receive such signals. The private equipment shall not be permitted to automatically connect to the telephone lines required by 2-1.13.1.2(a), 2-1.13.1.3(a), or 2-1.13.1.3(b).

2-1.13.1.4 Supervision. Where the service is available, no less than 50 percent but at least one of the fire reporting trunk lines between the telephone company central office and the communication center shall be supervised. Supervision shall be in accordance with the provisions of 3-2.6.

2-1.13.2* Universal Emergency Number 9-1-1 Service.

2-1.13.2.1 General. Universal emergency number 9-1-1 service, where provided, shall meet the minimum requirements as specified in this section.

2-1.13.2.2 Circuits. At least two incoming 9-1-1 circuits shall be provided to each communication center or Public Safety Answering Point (PSAP) location, as applicable. These circuits shall have diverse routes.

If the communication center and PSAP are not located in a common facility, there shall be at least two circuits provided between the PSAP and each fire communication center served by said PSAP. Supervision of the tie circuits, where utilized, shall be consistent with the provision of 2-1.13.1.4.

2-1.13.2.3 Circuit Protection. All conductors entering the PSAP shall be protected with devices, in the order named, starting from the exterior, as follows:

(a) A fuse rated at 3 amp minimum to 7 amp maximum and not less than 2000 volts;

(b) A lightning arrester; and

(c) A fuse or other device, such as a heat coil, rated at not more than 1/2 ampere; or

(d) Where the design of the equipment is such that other type protection is necessary, the recommendation of the manufacturer shall be followed.

2-1.13.2.4 Power Source. The PSAP location shall be powered by:

(a) A source not susceptible to variations in the utility distribution system.

(b) A source backed up by an emergency power source.

NOTE: Form 2B, a rectifier or motor-generator powered from two sources of alternating current, with a floating storage battery having a 4-hour standby capacity, shall be acceptable for this application.

2-1.13.2.5 PSAP Equipment.

(a) The PSAP equipment shall be capable of operating for 4 hours in the event of temporary primary power source outages.

(b) Voice recording interfaces shall be provided on all incoming circuits.

(c) The PSAP equipment shall be designed such that an equipment failure shall not prevent calls from being answered. Under failure conditions, the full feature complement does not have to be maintained; however, the calling party must be able to communicate with an attendant.

(d) The PSAP equipment shall be designed so that it can be manually forced (at the PSAP location by simulating a component failure) to operate in the failsafe mode.

2-1.13.2.6 Testing.

(a) *Power Source.* The power source shall be tested in accordance with 2-1.10.2.

(b) *Incoming Circuits.* Each incoming circuit shall be given an operational test at least weekly.

(c) *PSAP Equipment.* The PSAP equipment shall be operated in the failsafe mode at least weekly.

2-2 Fire Stations.

2-2.1 Power. Power for operating the necessary alarm receiving equipment shall meet the provisions of 2-1.6.

2-2.2 Electrical Wiring. Electrical wiring shall meet the provisions of 2-1.7.

2-2.3 Equipment Testing. Testing shall be conducted in accordance with the provisions of 2-1.10.

2-2.4 Telephones.

2-2.4.1 There shall be a telephone at each fire station.

2-2.4.2 Where there is no other means of voice communications with fire stations, the telephones at fire stations shall be arranged so that they cannot be called by the public except:

(a) Through a common switching point in the communication center, and

- (b) Where there is only one fire station in the community.

NOTE: This is not meant to apply to the office of the chief and other executive officers or to the communication center, which might be housed in a fire station.

2-2.5 Public Reporting at Fire Stations. A publicly accessible means of communication conforming to this standard shall be provided at fire stations for the reporting of emergencies at such times when the station is unoccupied.

Chapter 3 Dispatching Systems

3-1 Fundamental Requirements of Fire Alarm Dispatching Systems.

3-1.1 General.

3-1.1.1 A fire alarm dispatching system shall be designed, installed, operated, and maintained to provide the maximum practicable reliability for transmission and receipt of fire alarms.

3-1.1.2 Transmission of Other Signals.

3-1.1.2.1 Use of a fire alarm dispatching system for the transmission of other signals or calls of a public emergency nature is permissible provided such transmission does not interfere with the transmission and receipt of fire alarms.

3-1.1.2.2 Where the system is used as a communication network for other agencies of the jurisdiction, the fire alarm operator shall not be required to take action or responsibility for routine calls when the number of routine calls interferes with the proper handling of fire alarms.

3-1.2 Equipment and Installation.

3-1.2.1 All devices and equipment constructed and installed under this standard shall be suitable for the purposes for which they are intended.

3-1.2.2 All systems shall be installed in accordance with established practices and the applicable requirements of this standard.

3-1.2.3 All the devices shall be designed to function satisfactorily under the climatic conditions to which they are exposed.

3-1.2.4 Upon completion of system installation, a satisfactory test of the entire equipment shall be made in the presence of the authorized representative of the purchaser and, if required by the authority having jurisdiction, in the presence of its representative.

3-1.2.5 All apparatus shall be restored to normal condition as promptly as possible after each test or alarm for which the apparatus functioned.

3-1.3 Dispatch Circuits — General.

3-1.3.1 Two separate dispatch circuits shall be provided for transmitting alarms, except as permitted in 3-1.3.3 and 3-2.3.2. A circuit terminating at a telephone instrument only shall not be considered as either of the required dispatch circuits.

3-1.3.2*† One dispatch circuit shall consist of one of the following:

- (a) A supervised wired circuit; or

(b) A radio channel with duplicate base transmitters, receivers, microphones, and antennas; or

(c) A microwave supervised carrier channel; or

(d) A polling or self-interrogating radio or microwave radio system with duplicate base transmitters, and equipment necessary for redundancy; or

(e) A properly arranged, supervised telephone circuit.

3-1.3.3† The second dispatch circuit need not be supervised and shall be either a wired circuit or a radio channel. If radio is used as the second dispatch circuit, it need not have duplicate facilities. In those jurisdictions that receive fewer than 600 alarms per year, the second dispatch circuit shall not be required.

3-1.3.4 If voice transmission is used as a dispatch method, the transmission of an alarm over the circuit used shall be preceded by an audible warning or alerting signal [typically a distinctive tone(s)] to differentiate the alarm from routine traffic.

3-1.3.5 Facilities for retransmitting alarms to fire stations shall be installed at the place where telephone alarms are received.

3-1.3.6 Two separate facilities shall be provided, one of which shall be connected to a supervised dispatch circuit, except as outlined in 3-1.3.3 and 3-2.3.2.

3-1.3.7 The facilities shall include automatic recording of alarms transmitted over the required dispatch circuit(s). Provisions shall be made to automatically record the date and time of transmission.

NOTE 1: Alarms shall be permitted to be transmitted by coded signals or by signals for graphic or facsimile reproduction.

NOTE 2: Manual entry of date and time by the operator shall be satisfactory when graphic or facsimile transmission is used.

3-1.3.8 Automatic recording facilities shall be provided for alarms transmitted by voice, separate from those used for recording incoming voice alarms.

NOTE: When only one operator is required, a single recording facility shall be permitted to be used for the receipt and transmission of voice alarms.

3-1.3.9 Devices for transmitting coded or other types of signals shall be arranged for manual setting and operations.

3-1.4 Power.

3-1.4.1 General.

3-1.4.1.1 Power circuits, together with their associated motors, generators, rectifiers, transformers, fuses, and controlling devices, shall be in accordance with the requirements of NFPA 70, *National Electrical Code*.

3-1.4.1.2 The conductors of the power supply circuit shall be connected to the line side of the main service of a commercial light or power supply circuit or to the main conductors of an isolated power plant located on the premises, except as permitted in 3-1.4.1.3. The circuit disconnecting means shall be installed so that it is accessible only to authorized personnel.

NOTE: Power shall be permitted to be obtained from the load side of the main disconnect switch only where buildings house fire alarm and other emergency facilities.

3-1.4.1.3 Circuit protection, enclosed in a locked or sealed cabinet located immediately adjacent to the point of connection to the light and power conductors, shall be provided in series with each ungrounded conductor.

3-1.4.2 Power Source. Each dispatch circuit or radio dispatch channel, and related alarm transmitting or receiving devices, including equipment at stations needing local power for operation, shall be provided with two sources of power. The following methods of obtaining two sources of power shall be considered acceptable:

(a)† One circuit from a utility distribution system and a second from an engine-driven generator and a standby battery having a 4-hour capacity.

(b)† Two circuits from separate utility distribution systems, serviced or connected, so that normal supply to one will not be affected by trouble that would put the other out of service. This would require supply from two building services on entirely separate distribution networks from independent generating stations.

(c)† Two engine-driven generators with one unit supplying normal system power and the other unit serving as standby with facilities to apply its power to the line within 30 seconds. A standby storage battery having a 4-hour capacity shall be provided. If two engine-driven generators are used as a second source of power, the fire alarm system 4-hour battery shall be permitted to be omitted.

3-1.4.3 Power Supply.

3-1.4.3.1 The forms and arrangements of power supply shall be classified as described in 3-1.4.3.2 through 3-1.4.3.5.

NOTE: If the electrical service/capacity of the equipment required under 2-1.6 is adequate to satisfy the needs of the equipment in this section, said equipment need not be duplicated.

3-1.4.3.2 Form 2. Permissible for Type A systems only. Dispatch circuits served in multiple by:

(a)† *Form 2A.* A rectifier or motor-generator powered from a single source of alternating current, with a floating storage battery having a 24-hour standby capacity.

(b)† *Form 2B.* A rectifier or motor-generator powered from two sources of alternating current, with a floating storage battery having a 4-hour standby capacity.

(c)† *Form 2C.* Duplicate rectifier or motor-generator powered from two sources of alternating current with transfer facilities to apply power from the secondary source to the system within 30 seconds (*see 3-1.4.2*). Each rectifier or motor-generator shall be capable of powering the entire system.

NOTE: For Forms 2A, 2B, and 2C, these arrangements shall be permitted but are not recommended where circuits are wholly or partly open wire because of the possibility of trouble from multiple grounds.

3-1.4.3.2.1 Batteries, motor-generators, or rectifiers shall be sufficient to supply all connected circuits without exceeding the capacity of any battery or overloading any generator or rectifier, so that circuits developing grounds or crosses with other circuits can be supplied each by an independent source to the extent required by 3-1.4.3.2.2.

3-1.4.3.2.2 Provisions shall be made in the operations room for supplying any circuit from any battery, generator, or rectifier. Enclosed fuses shall be provided at points where supplies for individual circuits are taken from common leads. Necessary switches, testing, and signal transmitting and receiving devices shall be provided to permit the isolation, control, and test of each circuit to at least 10 percent of the total number of dispatch circuits but never less than 2.

3-1.4.3.2.3 If common-current source systems are grounded, the ground shall not exceed 10 percent of the resistance of any connected circuit and shall be located at one side of the battery. Visual and audible indicating devices shall be provided for each dispatch circuit to give immediate warning of ground leakage endangering operability.

3-1.4.3.3 Form 3. Each dispatch circuit served by:

(a)† *Form 3A.* A rectifier or motor-generator powered from a single source of alternating current with a floating storage battery having a 60-hour standby capacity.

(b)† *Form 3B.* A rectifier or motor-generator powered from two sources of alternating current with a floating storage battery having a 24-hour standby capacity.

3-1.4.3.4 Form 4. Each dispatch circuit served by:

(a)† *Form 4A.* An inverter powered from a common rectifier powered by a single source of alternating current, with a floating storage battery having a 24-hour standby capacity.

(b)† *Form 4B.* An inverter powered from a common rectifier receiving power from two sources of alternating current, with a floating storage battery having a 4-hour standby capacity.

NOTE: For Form 4A and Form 4B, it shall be permissible to distribute the system load between two or more common rectifiers and batteries.

(c)† *Form 4C.* A rectifier, converter, or motor-generator receiving power from two sources of alternating current with transfer facilities to apply power from the secondary source to the system within 30 seconds (*see 3-1.4.2*).

3-1.4.3.5 Local circuits at the communication center shall be supplied either in common with dispatch circuits or by a separate power source. The source of power for local circuits required to operate the essential features of the system shall be supervised.

3-1.4.3.6 Visual and audible means of indicating a 15 percent or greater reduction of normal power supply (rated voltage) shall be provided.

3-1.4.4 Rectifiers, Converters, Inverters, and Motor-Generators.

3-1.4.4.1 Rectifiers shall be supplied through an isolating transformer taking energy from a circuit not to exceed 250 volts.

3-1.4.4.2 Complete, ready-to-use spare units, or spare parts, shall be available in reserve.

3-1.4.4.3 One spare rectifier shall be provided for each 10 required for operation but in no case shall less than one be provided.

3-1.4.4.4 Leads from rectifiers or motor-generators, with storage battery floating, shall have fuses rated at not less than 1 ampere and not more than 200 percent of maximum connected load. Where not provided with battery floating, the fuse shall be not less than 3 amperes.

3-1.4.5 Engine-Driven Generator Sets.

3-1.4.5.1 The provisions of this section shall apply to generators driven by internal combustion engines.

3-1.4.5.2 The installation of such units shall conform to the provisions of NFPA 37, *Standard for the Installation and Use of Stationary Combustion Engines and Gas Turbines*, and NFPA 110, *Standard for Emergency and Standby Power Systems*, except as restricted by the provisions of this section.

3-1.4.5.3 The engine-driven generator set shall be located in an adequately ventilated cutoff area of the building housing the communication center equipment. The area housing the unit shall be used for no other purpose except storage of spare parts or equipment. Exhaust fumes shall be discharged directly outside the building.

3-1.4.5.4 Liquid fuel shall be stored outside the communication center in accordance with NFPA 37, *Standard for the Installation and Use of Stationary Combustion Engines and Gas Turbines*, and gravity feed shall not be used. Sufficient fuel shall be available for 24 hours of operation at full load.

3-1.4.5.5 Liquefied petroleum gas and natural gas installations shall meet the requirements of NFPA 54, *National Fuel Gas Code*, and NFPA 58, *Standard for the Storage and Handling of Liquefied Petroleum Gases*.

3-1.4.5.6 The unit, as a minimum, shall be of sufficient capacity to supply power to operate all fire alarm facilities and emergency lighting of the operations rooms or communication center.

3-1.4.5.7 When more than one engine-driven generator is provided, each shall be provided with a separate fuel line and transfer pump.

3-1.4.5.8 A separate storage battery on automatic float charger shall be provided for starting the engine-driven generator.

3-1.4.6 Batteries.

3-1.4.6.1 Batteries shall be of the storage type; primary batteries (dry cells) shall not be used. All cells shall be of the spill-proof type, adequately vented, and, as applicable, equipped with explosion-inhibiting caps. Lead-acid batteries shall be in jars of glass or other suitable transparent material; other types of batteries shall be in containers suitable for the purpose.

3-1.4.6.2 Batteries shall be located in the same building as the operating equipment, preferably on the same floor, and shall be readily accessible for maintenance and inspection. The battery space shall not be located below grade unless the structure is specifically designed for such a location and shall be ventilated to prevent accumulation of explosive gas mixtures.

3-1.4.6.3 Batteries shall be mounted to provide effective insulation from the ground and from other batteries. The mounting shall be suitably protected against deterioration, and consideration shall be given to stability, especially in geographic areas subject to seismic disturbance.

3-1.4.6.4 Battery leads of both polarities shall not be in the same conduit, tubing, or cable between battery terminals and fuses.

3-1.5 Testing.

3-1.5.1 General.

3-1.5.1.1 Tests and inspections shall be made at intervals not less frequent than those specified in this standard.

3-1.5.1.2 Testing facilities shall be installed at the communication center and the subsidiary communication center, if used.

Exception: If satisfactory to the authority having jurisdiction, those facilities for systems leased from a nonmunicipal organization that might be located elsewhere.

3-1.5.1.3 All apparatus shall be restored to normal condition as promptly as possible after each test or alarm for which the apparatus functioned.

3-1.5.1.4 Where supervisory devices or tests indicate that trouble has occurred anywhere on the system, the operator shall take appropriate steps to repair the fault or, if this is not possible, isolate the fault and notify the official responsible for maintenance.

3-1.5.2 Dispatching Systems.

3-1.5.2.1 Manual test of dispatch circuit instruments shall be made and recorded at least once every 24 hours. Circuits for transmission of graphic signals shall be tested by a message transmission.

3-1.5.2.2 Outside devices, radio, telephone, or other means for alerting volunteer and off-duty fire fighters shall be tested daily.

3-1.5.2.3 All wired radio and voice amplification circuits shall be subjected to a talking test at least twice daily.

3-1.5.3 Power.

3-1.5.3.1 Emergency power sources other than batteries shall be operated to supply the system for a continuous period of 1 hour at least weekly. This test shall require simulated failure of the normal power source.

3-1.5.3.2 Periodic tests shall be performed to ensure that the batteries are capable of supplying the system with power when required to do so. See Table 3-1.5.3.2(a) for the required tests and the maximum intervals at which they are to be performed.

Table 3-1.5.3.2(a) Required Tests For Lead-Acid Batteries

Test	Maximum Interval
Measure Float Voltage	
Of entire battery or a pilot cell	1 week
Of each cell	3 months
Measure Specific Gravity	
Of a pilot cell	6 weeks
Of each cell	6 months
Discharge for 2 hours	1 year
Clean and Inspect	3 months
Calibrate Meters	1 year

To maximize battery life, the battery voltage for lead-acid cells shall be maintained within the limits shown in the table below:

Float Voltage	High Gravity Battery (Lead Calcium)	Low Gravity Battery (Lead Antimony)
Maximum	2.25 volts/cell	2.17 volts/cell
Minimum	2.20 volts/cell	2.13 volts/cell
High Rate Voltage	2.33 volts/cell	

NOTE: High and low gravity voltages are (+)0.07 volts and (-)0.03 volts, respectively.

Table 3-1.5.3.2(b)* Required Tests For Nickel Cadmium Batteries

Test	Maximum Interval
Measure Float Voltage (1.42 volts per cell nominal)	
Of entire battery	3 months
Of each cell	1 year
Check State of Charge	6 months
Discharge for 2 hours	1 year
Clean and Inspect	3 months
Calibrate Meters	1 year

To maximize battery life, the battery shall be charged as follows:

Float Voltage	1.42 volts/cell \pm .01 volts
High Rate Voltage	1.58 volts/cell + .07 - 0.00 volts

3-1.6 Records.

3-1.6.1 General.

3-1.6.1.1 Complete records, sufficient to ensure reliable operation of all dispatching system functions, shall be maintained in a satisfactory manner.

3-1.6.1.2 Where a combination of leased/owned facilities exists, records required to be maintained by the lessor for the jurisdiction shall be specified.

3-1.6.1.3 A report of operations summarizing important statistics shall be prepared annually.

3-1.6.2 Circuits. Records of wired dispatch circuits shall include outline plans showing terminals and fire station sequence; diagrams of office wiring; materials used, including trade name, manufacturer, and year of purchase or installation.

3-1.6.3 Operating Practices.

3-1.6.3.1 Emergency calls, however received, shall be appropriately recorded and tabulated to indicate the source of origin.

3-1.6.3.2 Dispatch of mobile units in response to emergency calls shall be recorded. Records shall indicate units responding to all alarms, time of acknowledgment by units, time of arrival of first unit at scene, and time back in service of all units.

3-1.6.4 Emergency Generating Equipment. Emergency generating equipment periodic test records shall include date and time; fuel, electrical, coolant, and exhaust system conditions; and operating time.

3-1.7 Circuit Construction and Arrangement.

3-1.7.1 ANSI/IEEE C2, *National Electrical Safety Code*, shall be used for the installation of outdoor circuitry.

3-1.7.2 All installations shall be protected against damage due to mechanical injury, fire, falling walls, floods, corrosive vapors, or other causes.

3-1.7.3 Open local circuits within single buildings shall be permitted for the operation of alerting devices and alarm equipment additional to that required by this standard.

3-1.7.4 All circuits shall be routed to permit ready tracing of circuits for trouble.

3-1.7.5 Circuits shall not pass over, under, through, or be attached to buildings or property that is not owned by, or under the control of, the municipality or the agency responsible for maintaining the system.

3-1.7.6 Alarm instruments installed in private buildings shall be on separate dedicated circuits.

3-1.8 Circuit Conductors — General.

3-1.8.1 Wires shall be terminated to provide good electrical conductivity and to prevent breaking from vibration or stress.

3-1.8.2 Circuit conductors on terminal racks shall be identified and isolated from conductors of other systems wherever possible and shall be suitably protected from mechanical damage.

3-1.8.3 Exterior cable and wire shall conform to International Municipal Signal Association specifications or their equivalent.

Exception: Where circuit conductors are provided by a public utility on a lease basis, International Municipal Signal Association (IMSA) specifications shall not apply.

3-1.9 Cables.

3-1.9.1 General.

3-1.9.1.1 Cables that meet the requirements of Article 310, NFPA 70, *National Electrical Code*, for installation in wet locations shall be satisfactory for overhead or underground installation except that direct-burial cable shall be specifically approved for the purpose.

3-1.9.1.2 Paper or pressed pulp insulation shall not be considered satisfactory for emergency service such as a fire alarm system, except that cables containing conductors with such insulation shall be permitted be acceptable if pressurized with dry air or nitrogen. Loss of pressure in cables shall be indicated by a visual or audible warning system located where someone is in constant attendance who can interpret the pressure readings and who has the authority to have the indicated abnormal condition corrected.

3-1.9.1.3 Natural rubber-sheathed cable shall not be used where it can be exposed to oil, grease, or other substances or conditions that might tend to deteriorate the cable sheath. Braided-sheathed cable shall be used only inside of buildings where run in conduit or metal raceways.

3-1.9.1.4 Other municipally controlled signal wires shall be permitted to be installed in the same cable with fire alarm wires. Cables controlled by, or containing wires of, private signaling organizations can be used for fire alarm purposes only, with permission of the authority having jurisdiction.

3-1.9.1.5 Signaling wires that, because of the source of current supply, might introduce a hazard shall be protected and supplied as required for lighting circuits.

3-1.9.1.6 All cables, when installed with all taps and splices made, but before connection to terminals, shall be tested for insulation resistance. Such tests shall indicate an insulation resistance of at least 200 megohms per mile between any one conductor and all others, the sheath, and ground.

3-1.9.2 Underground Cables.

3-1.9.2.1 Underground cables in duct or direct burial cable shall be brought aboveground only at points where liability of mechanical damage, or disablement from heat incident to fires in adjacent buildings, is minimized.

3-1.9.2.2 Cables shall be in duct systems and manholes containing only low-tension signaling system conductors, low-tension secondary power cables, or both. If in duct systems or manholes containing power circuit conductors in excess of 250 volts to ground, fire alarm cables shall be located as far as possible from such power cables and shall be separated from them by a noncombustible barrier or by such other means as might be practicable to protect the fire alarm cables from damage.

3-1.9.2.3 All cables installed in manholes shall be properly racked and marked for identification.

3-1.9.2.4 All conduits or ducts entering buildings from underground duct systems shall be effectively sealed against moisture or gases entering the building.

3-1.9.2.5 Cable joints shall be located only in manholes, fire stations, and other locations where proper accessibility is provided and where there is little liability of damage to the cable by falling walls or by operations in the buildings. Cable joints shall be made to provide and maintain conductivity, insulation, and protection at least equal to that afforded by the cables that are joined. Cable ends shall be sealed against moisture.

3-1.9.2.6 Direct-burial cable, not enclosed in ducts, shall be laid in grass plots, under sidewalks, or in other places where the ground is not apt to be opened for other underground construction. If splices are made, such splices shall be accessible, where practicable, for inspection and tests. Such cables shall be buried at least 18 in. (0.5 m) deep and, where crossing streets or other areas likely to be opened for other underground construction, shall be in duct or conduit or be covered by properly protected planking of at least 2-in. × 4-in. (50-mm × 100-mm) planks with half-round grooves, spiked or banded together after the cable is installed.

3-1.10 Aerial Construction.

3-1.10.1 Fire alarm wires shall be run under all other wires except communication wires. Suitable precautions shall be provided where passing through trees, under bridges, over railroads, and at other places where damage or deterioration is possible. Wires and cables shall not be attached to a crossarm carrying electric light and power wires, except circuits carrying up to 220 volts for public communication use. Such 220-volt circuits shall be tagged or otherwise identified.

3-1.10.2 Aerial cable shall be supported by messenger wire of adequate tensile strength, except as permitted in 3-1.10.3.

3-1.10.3 Two-conductor cable shall be messenger supported unless it has conductors of size No. 20 AWG or larger and has mechanical strength equivalent to No. 10 AWG hard-drawn copper.

3-1.10.4 Single wire shall meet International Municipal Signal Association specifications and shall not be smaller than No. 10 Roebling gauge if of galvanized iron or steel, No. 10 AWG if of hard-drawn copper, No. 12 AWG if of approved copper-covered steel, or No. 6 AWG aluminum. Span lengths shall not exceed manufacturers' recommendations.

3-1.10.5 Aerial wires to buildings shall contact only intended supports and shall enter through an approved weatherhead or suitable sleeves slanting upward and inward. Drip loops shall be formed on wires outside of buildings.

3-1.11 Leads Down Poles.

3-1.11.1 Leads down poles shall be protected against mechanical damage. Any metallic covering shall form a continuous conducting path to ground. In all cases, installation shall prevent water from entering the conduit.

3-1.11.2 Leads shall have 600-volt insulation approved for wet locations, as defined in NFPA 70, *National Electrical Code*.

3-1.12 Wiring inside Buildings.

3-1.12.1 At the communication center, conductors shall extend as directly as possible to the operating room in conduits, ducts, shafts, raceways, or overhead racks and troughs of a type of construction affording protection against fire and mechanical damage.

3-1.12.2 All conductors inside buildings shall be in conduit, electrical metallic tubing, metal molding, or raceways. Installation shall be in accordance with NFPA 70, *National Electrical Code*.

3-1.12.3 Conductors shall have an approved insulation; the insulation or other outer covering shall be flame retardant and moisture resistant.

3-1.12.4 Conductors shall be installed as far as possible without joints. Splices shall be permitted only in junction or terminal boxes. Wire terminals, splices, and joints shall conform with NFPA 70, *National Electrical Code*.

3-1.12.5 Conductors bunched together in a vertical run connecting two or more floors shall have a flame-retardant covering sufficient to prevent the carrying of fire from floor to floor. This requirement shall not apply if the conductors are encased in a metallic conduit or located in a fire-resistive shaft having fire stops at each floor.

3-1.12.6 Where cables or wirings are exposed to unusual fire hazards, they shall be properly protected.

3-1.12.7 Cable terminals and cross-connecting facilities shall be located either in or adjacent to the operations room.

3-1.12.8 Where signal conductors and electric light and power conductors are run in the same shaft, the light and power conductors shall be in conduit.

3-2 Wired Dispatch Systems — Communication Center.

3-2.1 General. Dispatch circuits shall be provided in accordance with the provisions of 3-1.3.

3-2.1.1 A metallic dispatch circuit shall not be connected to alarm instruments in more than five fire stations.

3-2.1.2 Where a wired graphic or voice amplification circuit is used as one of the required dispatch circuits, such circuit shall be individual to each fire station or the instruments shall be connected in parallel in the circuit.

3-2.1.3 Coded signals shall be transmitted not slower than two strokes per second. If outside alerting devices are employed, transmission shall be over separate circuits but shall be at a speed suitable for such devices.

3-2.1.4 A separate tie circuit shall be provided from the communication center to each subsidiary communication center.

NOTE: In a Type B system, where all boxes in the system are of succession type, it shall be permissible to use the tie circuit as a dispatch circuit.

3-2.2 Requirements for Constant-Current Systems.

3-2.2.1 Means shall be provided for manually regulating current in dispatch circuits so that operating current is maintained within 10 percent of normal throughout changes in external circuit resistance from 20 percent above to 50 percent below normal.

3-2.2.2 The voltage supplied to maintain normal line current on dispatch circuits shall not exceed 150 volts, measured under "no load" conditions, and where box circuits are used as dispatch circuits, the line current shall not be reduced below safe operating value by the simultaneous operation of four boxes.

3-2.2.3 Visual and audible means to indicate a 20 percent or greater reduction in the normal current in any dispatch circuit shall be provided. All devices connected in series with any dispatch circuit shall function properly when the dispatch circuit current is reduced to 70 percent of normal.

3-2.2.4 Sufficient meters shall be provided to indicate the current in any dispatch circuit and the voltage of any power source. Meters used in common for several circuits shall be provided with cut-in devices designed to reduce the probability of cross-connecting circuits.

3-2.3 Type B System.

3-2.3.1 A box circuit entering a fire station and connected there to automatic recording and sounding facilities shall be permitted as one of the two required dispatch circuits.

3-2.3.2 In those jurisdictions where fewer than 600 alarms per year are received, or where all stations have recording and sounding devices responsive to each box circuit, the second dispatch circuit shall not be required; only the supervised dispatch circuit facility need be provided.

3-2.3.3 In a Type B system, the following requirements shall also apply.

(a) Facilities shall be installed to automatically transmit alarms received from any box to all fire stations and, where employed, to outside sounding devices.

(b) Control facilities shall permit any or all circuits to be individually connected to or disconnected from the repeating mechanism.

(c) Code transmitting devices using metallic conductors shall be provided with means for transferring the facilities from one dispatch circuit to another.

3-2.4 Circuit Protection.

3-2.4.1 General.

3-2.4.1.1 The protective devices shall be located close to, or shall be combined with, the cable terminals.

3-2.4.1.2 Lightning arresters suitable for the purpose shall be provided. Lightning arresters shall be marked with the name of the manufacturer and model designation.

3-2.4.1.3 All lightning arresters shall be connected to a suitable ground in accordance with NFPA 70, *National Electrical Code*.

3-2.4.1.4 All fuses shall be plainly marked with their rated ampere capacity. All fuses rated over 2 amps shall be of the enclosed type.

3-2.4.1.5 Circuit protection required at the communication center shall be provided in every building housing communication center equipment.

3-2.4.1.6 Each conductor entering a fire station from partially or entirely aerial lines shall be protected by a lightning arrester.

3-2.4.1.7 All conductors entering the communication center shall be protected by the following devices, in the order named, starting from the exterior circuit:

(a) A fuse rated at 3 amps minimum to 7 amps maximum and not less than 2000 volts;

(b) A lightning arrester;

(c) A fuse or circuit breaker, rated at 1/2 amp.

3-2.4.1.8 The 1/2-amp protection on tie-line circuits shall be omitted at subsidiary communication center.

3-2.4.2 Protection on Aerial Construction.

3-2.4.2.1 At junction points of open aerial conductors and cable, each conductor shall be protected by a weatherproof lightning arrester or suitably protected from the weather. There shall also be a connection between the lightning arrester ground and any metallic sheath and messenger wire.

3-2.4.2.2 Aerial open wire and nonmessenger-supported two-conductor cable circuits shall be protected by lightning arresters at intervals of approximately 2000 ft (610 m).

3-2.4.2.3 All protective devices shall be accessible for maintenance and inspection.

3-2.5 Wired Dispatch Equipment — General.

3-2.5.1 All wired dispatch devices and instruments, the failure of which would adversely affect the operation of the system, shall be mounted upon noncombustible bases, pedestals, switchboards, panels, or cabinets. All mounting shall be of such design and construction that all components are readily accessible.

3-2.5.2 Wires on switchboards shall be not smaller than No. 24 AWG. Unsupported wires and wires subject to vibration shall be not smaller than No. 18 AWG. The outer covering over the insulation of such wires, or the insulation itself if no outer covering is present, shall be flame retardant and moisture resistant.

3-2.5.3 Equipment shall be designed and installed so that it shall be capable of performing its intended function at 85 percent and at 110 percent of the rated voltage.

3-2.5.4 The normal operation of the system shall not require the use of a ground return to secure any essential function. Circuits extending outside the communication center shall normally test free of ground. This shall not prohibit the use of the ground to secure functioning under abnormal line conditions, provided such use would not prevent reception or transmission of a signal under normal conditions if the circuit were accidentally grounded.

3-2.5.5 Means for transmission of alarms by the public shall be conspicuous and readily accessible for easy operation.

3-2.6 Supervision.

3-2.6.1 To ensure operability, wired circuits and devices upon which transmission and receipt of alarms depend shall be under constant electrical supervision to give prompt warning of electrical conditions adversely affecting operability.

3-2.6.2 The power supplied to all required circuits and devices of the system shall be supervised.

3-2.6.3 Trouble signals shall actuate a sounding device located where there is always a responsible person on duty.

3-2.6.4 Trouble signals shall be distinct from alarm signals and shall be indicated by both a visual light and an audible signal.

NOTE 1: The audible signal shall be permitted to be common to several supervised circuits and devices.

NOTE 2: A switch for silencing the audible trouble signal shall be permitted if the visual signal remains operated until the silencing switch is restored to its normal position.

3-2.6.5 The audible signal shall be responsive to faults on any other circuits that might occur prior to restoration of the silencing switch to normal.

3-2.7 Testing — General. Tests and inspections shall be conducted in accordance with the requirements of 3-1.5. In addition, the requirements of 3-2.7.1 through 3-2.7.2 shall apply.

3-2.7.1 Manual tests of the power supply for dispatch circuits shall be made and recorded at least once during each 24-hour period. Such tests shall include:

(a) Current strength of each circuit. Changes in current of any circuit amounting to 10 percent of normal current shall be investigated immediately.

(b) Voltage across terminals of each circuit, inside of terminals of protective devices. Changes in voltage of any circuit, amounting to 10 percent of normal voltage, shall be investigated immediately.

(c) Voltage between ground and circuits. When this test shows a reading in excess of 50 percent of that shown in the test mentioned in 3-2.7.1(b), the trouble shall be located immediately and cleared; readings in excess of 25 percent shall be given early attention. These readings shall be taken with a voltmeter of not more than 100 ohms resistance per volt.

NOTE 1: The voltmeter sensitivity has been changed from 1000 ohms per volt to 100 ohms per volt so that false ground readings (caused by induced voltages) are minimized.

NOTE 2: Systems in which each circuit is supplied by an independent current source (Forms 3 and 4) shall require tests between ground and each side of each circuit. Common current source systems (Form 2) shall require voltage tests between ground and each terminal of each battery and other current source.

(d) A ground current reading shall be acceptable in lieu of 3-2.7.1(c). When this method of testing is used, all grounds showing a current reading in excess of 5 percent of the normal line current shall be given immediate attention.

(e) Voltage across terminals of common battery, on switchboard side of fuses.

(f) Voltage between common battery terminals and ground. Abnormal ground readings shall be investigated immediately.

NOTE: Tests (e) and (f) shall apply only to those systems using a common battery. If more than one common battery is used, each common battery shall be tested.

3-2.7.2 Manual tests of dispatch circuit instruments shall be made and recorded at least once during each 24-hour period.

3-3 Wired Dispatch Systems — Fire Stations.

3-3.1 General.

3-3.1.1 A metallic dispatch circuit shall not be connected to alarm instruments in more than five fire stations.

3-3.1.2 Where a wired graphic or voice amplification circuit is used as one of the required dispatch circuits, either such circuit shall be individual to each fire station, or the instruments shall be connected in parallel in the circuit.

3-3.1.3 A separate tie circuit shall be provided from the communication center to each subsidiary communication center.

NOTE: In a Type B system, where all boxes in the system are of succession type, it shall be permissible to use the tie circuit as a dispatch circuit.

3-3.2 Equipment in Fire Stations.

3-3.2.1 As required in 3-1.3, each fire station shall have two separate and distinct facilities for receiving notification from the communication center that response of the apparatus and personnel is expected.

Exception: Except as permitted in 3-1.3.3 and 3-2.3.2.

3-3.2.2 An audible signal device shall be connected to each of the two dispatch circuits. When coded signals are used for the supervised circuit, the signals also shall be visually recorded.

3-3.2.3 Where watch is maintained at all times, instruments on all dispatch circuits shall be located in the vicinity of the watch desk. Alarm instruments need not be located elsewhere in the fire station, except as necessary to alert all fire fighters.

3-3.2.4 Means of acknowledging receipt of an alarm from the fire station to the operator shall be provided. The acknowledgment shall be permitted to be made by radio (including that on apparatus when responding) or by metallic circuits, including departmental telephone facilities.

3-3.2.5 Alarms from the communication center shall be automatically received at each fire station.

3-3.2.6 An audible warning or alerting signal [typically a distinctive tone(s)] shall precede any alarm transmitted by voice.

3-3.2.7 For coded and graphic systems, a permanent record and an audible signal are required to indicate the receipt of an alarm. The permanent record shall indicate the exact location from which the alarm is being received.

3-3.2.8 Facilities for reception of alarms from the communication center shall be installed where a house watch is constantly on duty or shall be arranged to alert all personnel within the fire station premises.

3-3.2.9 Where watch is not maintained, sufficient audible devices shall be installed throughout the fire station to ensure that all members are alerted to alarms at any hour.

3-3.2.10 Coded signals shall be received not slower than 2 strokes per second. If outside alerting devices are employed, reception shall be over separate circuits but shall be at a speed suitable for such devices.

3-3.3 Type B System. In a Type B system, the following requirements shall also apply:

(a) Facilities shall be installed to automatically receive alarms from any box at all fire stations.

(b) In those municipalities that receive fewer than 600 alarms per year or where all stations have recording and sounding devices responsive to each box circuit, only the supervised dispatch circuit facility need be provided.

3-3.4 Testing.

3-3.4.1 Manual tests of the power supply for dispatch circuits shall be made and recorded at least once during each 30-day period. Such tests shall include:

(a) Voltage across terminals of power source on receiving device side of fuses.

(b) Voltage between power source terminals and ground. Abnormal ground readings shall be investigated immediately.

3-3.4.2 Emergency generator equipment shall be operated to supply the system for a continuous period of 1 hour at least weekly.

NOTE: This test requires simulated failure of normal power source.

3-3.4.3 Batteries supplying dispatch equipment shall be tested in accordance with 3-1.5.3.2.

3-3.5 Records. Emergency generating equipment periodic test records shall include date and time; fuel, electrical, coolant, and exhaust system conditions; and operating time.

3-3.6 Wiring in Fire Stations. At fire stations, conductors shall extend as directly as possible to alarm equipment in conduits, ducts, shafts, raceways or overhead racks, and troughs of a type of construction providing protection against fire and mechanical damage.

3-3.7 Circuit Protection.

3-3.7.1 Each conductor entering a fire station from partially or entirely aerial lines shall be protected by a lightning arrester.

3-3.7.2 The protective devices shall be located close to, or be combined with, the cable terminals.

3-3.7.3 Lightning arresters suitable for the purpose shall be provided. Lightning arresters shall be marked with the name of the manufacturer and model designation.

3-3.7.4 All lightning arresters shall be connected to a suitable ground in accordance with NFPA 70, *National Electrical Code*.

3-3.7.5 All fuses shall be plainly marked with their rated ampere capacity. All fuses rated over 2 amps shall be of the enclosed type.

NOTE: Fuses are not recommended for conductors entering a fire station. If fuses are used, they must be rated at least 5 amps.

3-3.8 Power.

3-3.8.1 Receiving devices at fire stations needing local power for operation shall be provided with two sources of power.

3-3.8.2 Power arrangements and facilities shall be in accordance with 3-1.4.

3-4 Radio Dispatch Systems — Communication Center.

3-4.1 General.

3-4.1.1 Radio dispatch circuits, where used, shall be provided in accordance with 3-1.3.

3-4.1.2 If the primary transmitter fails upon operation, switchover to the second transmitter shall be automatic, with audible and visual indications to the operator. However, if the transmitter controls are located where someone is always on duty, switchover facilities shall be permitted to be manually operated if manual operation is possible within 30 seconds.

3-4.1.3 If both of the dispatch circuits are radio, separate radio frequencies shall be provided.

3-4.1.4 Jurisdictions shall be permitted to share the same fire frequency(ies), provided that a Continuous Tone Coded Squelch System (CTCSS) or a Continuous Digital Coded Squelch System (CDCSS) is used.

3-4.1.5 Radio dispatch channels shall be separate from radio channels used for routine or fireground communications.

3-4.1.6 For each frequency used, two separate receiving networks, each including an antenna, audio alerting device, receiver, power supply, signal processing equipment, a means of providing a permanent graphic recording of the incoming message that is both timed and dated, and other associated equipment shall be provided and shall be installed at the communication center. Facilities shall be arranged so that a failure of either receiving network will not affect the receipt of messages from boxes.

3-4.2 Fusing — Circuit Protection. For wired portions of a radio dispatch circuit (i.e., antenna networks, etc.), circuit protection shall be provided in a manner consistent with the provisions of 3-2.4.

3-4.3 Radio Dispatch Equipment — General.

3-4.3.1 All radio dispatch devices and instruments, the failure of which would adversely affect the operation of the

system, shall be mounted upon noncombustible bases, pedestals, switchboards, panels, or cabinets. All mounting shall be of such design and construction that all components are readily accessible.

3-4.3.2 The outer covering over wires, or the insulation itself if no outer covering is present, shall be flame retardant and moisture resistant.

3-4.3.3 Equipment shall be designed and installed so that it shall be capable of performing its intended functions in a range of 85 percent through 110 percent of rated voltage.

3-4.4 Supervision.

3-4.4.1 To ensure reliability, wired circuits and devices upon which transmission and receipt of alarms depend, where required, shall be under constant electrical supervision to give prompt warning of conditions adversely affecting reliability. Supervised radio channels upon which transmission and receipt of alarms depend shall meet the requirements of 3-1.3.2 and 3-4.1.2.

3-4.4.2 The power supplied to all required circuits and devices of the system shall be supervised.

3-4.4.3 Trouble signals shall actuate a sounding device and visual signal located where there is always a responsible person on duty.

3-4.4.4 Trouble signals shall be distinct from alarm signals and shall be indicated by both a visual light and an audible signal.

NOTE 1: The audible signal can be common to several supervised circuits and devices.

NOTE 2: A switch for silencing the audible trouble signal shall be permitted if the visual signal continues to operate until the silencing switch is restored to its normal position.

3-4.4.5 The audible signal shall be responsive to faults on any other circuits that might occur prior to restoration of the silencing switch to normal.

3-4.4.6 When a single-wired circuit is used to connect the base radio transmitters with remote control units in compliance with 3-1.3.2(b) and (c), or (d), the wired circuit shall be supervised.

3-4.5 Testing. Tests and inspections shall be conducted in accordance with the applicable requirements of 3-1.5.

3-4.6 Records.

3-4.6.1 General. Records shall be maintained in accordance with the applicable requirements of 3-1.6.

3-4.6.2 Channels. Records of radio dispatch channels, and any associated wired circuits, shall include outline plans showing transmitters and receivers; diagrams of interconnecting office wiring; materials used, including trade name and manufacturer; and year of purchase or installation.

3-4.7 Electrical Wiring. Metallic interconnections and other electrical wiring shall meet the provisions of 3-1.7 through 3-1.12.

3-5 Radio Dispatch Systems — Fire Stations.

3-5.1 Each fire station shall have two independent facilities for receiving notification from the communication

center that response of the apparatus and personnel is expected, except as permitted in 3-2.3.2.

3-5.2 Visual indication shall be provided to indicate that radio facilities are in the "on" position.

3-5.3 An audible signal device shall be connected to the dispatch channel. When coded signals are transmitted over the radio channel, the signals shall also be graphically recorded.

3-5.4 Where watch is maintained at all times, instruments on all dispatch circuits shall be located in the vicinity of the watch desk. Alarm instruments need not be located elsewhere in the fire station, except as necessary to alert all fire fighters.

3-5.5 Means of acknowledging receipt of an alarm from the fire station to the operator shall be provided. The acknowledgment shall be permitted to be by radio (including that on apparatus when responding) or by metallic circuits, including departmental telephone facilities.

3-5.6 Alarms from the communication center shall be automatically received at fire stations.

NOTE: Voice alarms shall be recorded only at the communication center.

3-5.7 An audible warning or alerting signal [typically a distinctive tone(s)] shall precede any alarm transmitted by voice.

3-5.8 For coded and graphic systems, a permanent record and an audible signal shall be required to indicate the receipt of an alarm. The permanent record shall indicate the exact location from which the alarm is received.

3-5.9 Facilities for reception of alarms from the communication center shall be installed where a house watch is constantly on duty or shall be arranged to alert all personnel within the fire station premises.

3-5.10 Where watch is not maintained, sufficient audible devices shall be installed throughout the fire station to ensure that all members are alerted to alarms at any hour.

3-6 Radio Dispatching — Mobile Equipment.

3-6.1 The communication center shall be equipped for radio communication with fire apparatus.

3-6.2* All fire apparatus and other fire department emergency vehicles shall be equipped with two-way radios that conform to FCC Rules and Regulations.

3-6.3 A separate frequency shall be provided for fire-ground communications for jurisdictions or multiple jurisdictions on the same channel receiving 2500 or more alarms per year or where multiple jurisdictions share a common radio frequency.

3-6.4 Mobile radios shall be equipped with a transmitting lamp.

3-6.5 Spare mobile radio units shall be provided for radio-equipped fire-fighting apparatus as follows:

(a) A minimum of one spare unit for each model not directly interchangeable.

(b) A minimum of one spare unit for each 20 units in service.

3-6.6 All base stations and mobile radio transmitters shall be equipped with a carrier control timer to disable the transmitter in the event of a malfunction causing it to remain inadvertently on the air.

3-6.7 The jurisdiction shall adopt a uniform code for radio dispatching. When more than one jurisdiction is dispatched from a single communication center, or is involved in routine mutual aid operations with other jurisdictions, the code shall be common for all jurisdictions.

3-6.8 There shall be qualified technical assistance available for trouble analysis and repair either by in-house personnel or by an outside contract maintenance service with a maximum response time of 2 hours from time of notification.

3-6.9 All fire vehicles assigned to aircraft emergency responses shall also be equipped with radios capable of operating on the aircraft ground control emergency channels.

3-6.10 Mobile radios and associated equipment shall be manufactured for the environment in which it will be used.

3-6.11 When a data transmission function is utilized, mobile radios shall have the ability to transmit data without distortion, and the equipment shall be designed to ensure full data stream transmission at full power.

3-6.12 If scanning devices are used, they shall have an automatic priority feature whereby the radio will revert automatically to its primary channel when the channel is being used. Scanning devices shall have a manual lock position to lock the receiver on its primary channel. No other lock position shall be permitted.

3-6.13 Mobile radios shall be capable of Continuous Tone Coded Squelch System (CTCSS) or Continuous Digital Coded Squelch System (CDCSS) operation to reduce the interference/annoyance level.

NOTE: If operating in standard squelch systems, coded squelch circuitry shall be permitted to be partially or completely disabled.

3-7 Radio Dispatching — Portable Equipment.

3-7.1 This section applies to fire-portable radio devices utilized as a part of a primary dispatch network. The criteria for similar devices used in miscellaneous services, including fireground operations, are found in 3-11.3.

3-7.1.1 Portable radios shall conform to FCC Rules and Regulations.

3-7.1.2 Fire-portable equipment shall be manufactured for the environment in which it will be used with size and construction making it capable of one-handed operation.

3-7.1.3 Fire-portable radio transceivers shall not be placed into transmit mode except by operator action on a mechanically guarded switch.

3-7.1.4 Fire-portable radio transmitters shall have a carrier-controlled timer to disable the transmitter in the event of a malfunction that causes the transmitter to remain inadvertently on the air.

3-7.1.5 Multiple-frequency fire-radio transceivers shall be capable of changing channels while operators are wearing gloves.

3-7.1.6 Single unit chargers for fire-portable radios shall be capable of charging fully while the radio is in the receiving mode.

3-7.1.7 Battery chargers for portable radios shall automatically revert to maintenance charge when the battery is fully charged.

3-7.1.8 Battery chargers shall be capable of charging batteries independently and externally of the portable radio unit.

3-7.1.9 Spare batteries shall be maintained in sufficient quantities to permit reliable operation of fire-portable radios.

NOTE: Rapid-charge batteries and chargers shall be permitted to be utilized to reduce the quantity of spare batteries needed.

3-7.1.10 Fire-portable transceivers shall be capable of multiple-frequency operation to enable a fireground radio network to be organized independently of normal dispatch channels.

3-7.1.11 Fire-portable radios shall be capable of Continuous Tone Coded Squelch System (CTCSS) or Continuous Digital Coded Squelch System (CDCSS).

NOTE: If operating in standard squelch systems, continuous coded squelch circuitry can be partially or completely disabled.

3-7.1.12 When a data transmission function is utilized from fire-portable transceivers, the radio shall be capable of transmitting data without distortion, and the equipment shall be designed to ensure full data stream transmission at full power.

3-7.1.13 When utilizing fire-portable transceivers in a fire dispatch system, system design shall be such that a portable transceiver will be capable of operating properly within the dispatch area without the use of mobile RF amplifiers.

NOTE: These requirements shall not apply to equipment used for biomedical operations.

3-7.1.14 If scanning devices are used, they shall have an automatic priority feature whereby the radio will revert automatically to its primary channel whenever the channel is being used. Scanning devices shall have a manual lock position to lock the receiver on its primary channel. No other lock position shall be permitted.

3-7.1.15 Radio pocket pagers shall indicate audibly before the battery is incapable of operating the pager for alerting purposes.

3-8 Telephone Dispatch Systems — Communication Center.

3-8.1 General. This section applies to a telephone dispatch circuit when it is used as one of the dispatch circuits and satisfies the requirement in 3-1.3.2(e).

3-8.2 Circuit Protection.

3-8.2.1 General.

3-8.2.1.1 The protective devices shall be located close to, or be combined with, the cable terminals.

3-8.2.1.2 Lightning arresters suitable for the purpose shall be provided. Lightning arresters shall be marked with the name of the manufacturer and model designation.

3-8.2.1.3 All lightning arresters shall be connected to a suitable ground in accordance with NFPA 70, *National Electrical Code*.

3-8.2.1.4 All fuses shall be plainly marked with their rated ampere capacity. All fuses rated over 2 amps shall be of the enclosed type.

3-8.2.1.5 Circuit protection required at the communication center shall be provided in every building housing communication center equipment.

3-8.2.1.6 Each conductor entering a fire station from partially or entirely aerial lines shall be protected by a lightning arrester.

3-8.2.2 Communication Center. All conductors entering the communication center shall be protected with devices, in the order named, starting from the exterior circuit, as follows:

- (a) A fuse rated at 3 amps minimum to 7 amps maximum and not less than 2000 volts;
- (b) A lightning arrester;
- (c) A fuse or other device, such as a heat coil, rated at not more than 1/2 ampere; or
- (d) Where the design of the system is such that another type of protection is necessary, the recommendation of the manufacturer shall be followed.

3-8.2.3 Protection on Aerial Construction.

3-8.2.3.1 At junction points of open aerial conductors and cable, each conductor shall be protected by a lightning arrester of weatherproof type or shall be suitably protected from the weather. There shall also be a connection between the lightning arrester ground and any metallic sheath and messenger wire.

3-8.2.3.2 Aerial open-wire and nonmessenger-supported two-conductor cable circuits shall be protected by a lightning arrester at intervals of approximately 2000 ft (610 m).

3-8.2.3.3 All protective devices shall be accessible for maintenance inspection.

3-8.3 Supervision.

3-8.3.1 To ensure operability, wired circuits and devices upon which transmission and receipt of alarms depend shall be, where required, under constant electrical supervision to give prompt warning of conditions adversely affecting operability.

3-8.3.2 The power supplied to all required circuits and devices of the system shall be supervised.

3-8.3.3 Trouble signals shall actuate a sounding device located where there is always a responsible person on duty.

3-8.3.4 Trouble signals shall be distinct from alarm signals and shall be indicated by both a visual light and an audible signal.

NOTE 1: The audible signal shall be permitted to be common to several supervised circuits and devices.

NOTE 2: A switch for silencing the audible trouble signal shall be permitted if the visual signal continues to operate until the silencing switch is restored to its normal position.

3-8.3.5 The audible signal shall be responsive to faults on any other circuits that might occur prior to restoration of the silencing switch to normal.

3-8.4 Testing. Tests and inspections shall be conducted in accordance with the applicable requirements of 3-1.5.

3-8.5 Circuit Construction and Arrangement.

3-8.5.1 Circuits shall be constructed and arranged in accordance with the provisions of 3-1.7.

Exception: These provisions shall not apply when circuitry is provided by a public utility on a lease basis.

3-8.5.2 Other signal wires under control of the utility as the agency responsible for maintenance of the system shall be permitted to be installed in the same cable with fire alarm wires. The dispatch circuits shall be well identified as emergency circuits at all points that might be exposed to maintenance personnel.

3-9 Telephone Dispatch Systems — Fire Stations.

3-9.1 Equipment in Stations. Each fire station shall have facilities for receiving notification from the communication center that response of the apparatus and personnel is expected.

3-9.2 Voice Amplification. The telephone dispatch circuit shall be equipped with a loudspeaker(s) at the fire station for receipt of fire alarm messages.

3-9.2.1 The dispatch circuit shall be arranged to automatically provide an audible warning or alerting signal [typically a distinctive tone(s)] over the loudspeaker prior to transmission of an alarm message.

3-9.2.2 The dispatch circuit shall be arranged for acknowledgment of messages by removing the handset in the fire station, which automatically removes the loudspeaker(s) from the circuit.

3-10 Commercial Telephones — Fire Stations.

3-10.1 General. In addition to the required dispatch circuits and receiving equipment, commercial telephone facilities shall be provided and shall meet the requirements of this section.

3-10.2 There shall be a telephone at each fire station.

3-10.3 Where there is no other means of voice communications with fire stations, the telephones at fire stations shall be arranged so that they cannot be called by the public.

Exception: (a) Through a common switching point in the communication center, or (b) where there is only one fire station in the community.

NOTE: This is not meant to apply to the office of the chief and other executive officers or to the communication center, which can be housed in a fire station.

3-11 Other Alerting Facilities — Volunteer and Off-Shift Fire Fighters.

3-11.1 Telephone Circuits. A separate tie circuit shall be provided from the communication center to the telephone central office for a telephone group alerting system.

3-11.1.1 The tie circuit shall not be used for any other purpose or function than its intended purposes in a telephone group alerting system.

3-11.1.2 The tie circuit shall be supervised with visual and audible alarms in accordance with 3-2.6.

3-11.2 Alerting Facilities.

3-11.2.1 Where outside alerting devices are used to indicate a fire alarm, they shall be suitably located for alerting all available fire department members.

3-11.2.2 Where coded alerting devices are not operable at speeds of at least one actuation per second, a special operating circuit shall be provided. Three or four rounds of coded signals shall be required where outside alerting devices are operated for summoning fire fighters.

3-11.2.3 Telephone or other alerting facilities shall be provided for alerting all available fire department members. Where radio alerting receivers are employed, a secondary power supply shall be provided for each unit.

NOTE: Such facilities need not actuate an outside alerting device.

3-11.2.4 Electrical power essential for operation of alerting devices shall meet the requirement of 3-1.4. This shall include power for control equipment such as relays, timers, coders, etc., and, where required, for operation of the alerting device itself.

3-11.2.5 Compressed air alerting devices shall have a distinctive tone; if coded, the duration of the blast shall be neither less than $\frac{1}{2}$ second nor longer than $1\frac{1}{2}$ seconds, with silent intervals of 1 to $1\frac{1}{2}$ times the blast.

3-11.2.6 Storage tanks shall comply with ASME specifications for unfired pressure vessels and shall be equipped with a safety relief valve. Size shall be such that, at 85 percent of normal pressure, eight times the largest number of blasts assigned to any signal can be sounded but not less than 50 blasts.

3-11.2.7* Compressors shall have sufficient capacity to fill storage tanks to normal pressure within 30 min. Piping of ferrous materials shall be provided with adequate scale traps, accessible for ready cleaning. All piping shall be arranged to permit inspection and repair.

3-11.3 Miscellaneous Radio Devices.

3-11.3.1 Where radio home alerting receivers, hand-held units, pocket pagers, and similar radio devices are used to receive fire alarms, or are used on the fireground, they shall conform to the requirements of 3-11.3.2 through 3-11.3.6.

3-11.3.2 Fire-portable radio equipment shall be manufactured for the environment in which it will be used, with size and construction making it capable of one-handed operation.

3-11.3.3 Fire-portable radio transceivers shall not be placed into transmit mode except by operator action on a mechanically guarded switch.

3-11.3.4 Multiple-frequency fire-radio transceivers shall be capable of changing channels while operators are wearing gloves.

3-11.3.5 Single unit chargers for fire-portable radios shall be capable of charging fully while the radio is in the receiving mode.

3-11.3.6 Radio pocket pagers shall indicate audibly before the battery is incapable of operating the pager for alerting purposes.

3-12 Computer-Aided Dispatching (CAD) Systems.

3-12.1 General.

3-12.1.1 Fire service dispatching entities employing Computer-Aided Dispatching (CAD) systems shall have qualified technical assistance available for trouble analysis and repair by in-house personnel or by authorized outside contract maintenance services.

3-12.1.2 Where a CAD system is used for fire service dispatch operations, manual back-up facilities shall be provided and shall be readily available for use in the event of problems with, or failure of, the CAD system.

3-12.1.3 Support Dispatch Information. There shall be an up-to-date hard copy file of stored information located on the premises to support the dispatching system should the CAD system fail.

3-12.1.4 Dispatch Capabilities. The installation of a CAD system in fire service dispatching shall not negate the requirements for a second dispatch system. The requirements associated with the type of secondary system selected for use, such as radio, teletype, or wire, shall continue to be met.

3-12.1.5 The CAD systems shall be dedicated pieces of equipment whose use serves only to enhance fire services dispatching operations. The use of these computer systems to serve unrelated services or other departments shall be prohibited.

Exception: When dispatching operations are of a combined public service nature, the computer system shall be permitted to be used jointly, provided that an automatic control function is installed in the dispatching control console positions allowing the operator control override of all agency dispatching for the purpose of dispatching priority traffic. Any emergency that, in the judgment of the operator in charge, is categorized to be life-threatening shall take precedence over all other traffic in a combined dispatch communication center using a shared computer system.

3-12.2 Classification of Systems. CAD systems in fire communication services shall be categorized as Class 1, Class 2, or Class 3.

3-12.2.1 A Class 1 CAD system shall be one in which computer technology and equipment selects and recommends to the operator appropriate units to dispatch. The system shall be redundant and shall provide automatic switchover in case of failure of the primary operating Central Processing Unit (CPU) and shall transmit and receive data transmissions from fire stations, other administrative sites, and mobile vehicles operated by the fire department.

3-12.2.2 A Class 2 CAD system shall be one in which computer technology and equipment are used in the communication center in support of dispatching operations. The system shall be redundant and shall transmit and receive data transmissions from fire stations, other administrative sites, and mobile vehicles operated by the fire department.

3-12.2.3 A Class 3 CAD system shall be one in which computer technology is used as a support function to fire service dispatching and is limited primarily to status and logging information.

3-12.3 Class 1 CAD System.

3-12.3.1 General. The CAD system shall be an integrated system of computers, consoles, CRT/keyboard terminals, monitor displays, printers, local and remote administrative terminals, data bases, and computer software. The CAD system shall be capable of interfacing with other related systems (i.e., telephone, 9-1-1, fire alarm, etc.).

The function of the Class 1 CAD system shall be to:

(a) Process emergency calls for service, handle peak call loads, select units for assignment to calls and ensure that the optimum units are selected, provide the initial alerting and dispatch communications to assigned units and provide them with all necessary information, provide unit status monitoring, and support direct entry of status information from the field.

(b) Provide automated support to the monitoring and management of in-process incidents.

(c) Provide detailed and accurate records of all operations in a format suitable for computer analysis.

3-12.3.2 Auxiliary Power. Computer hardware equipment located at the communication center shall have installed and operational an on-line uninterruptable power supply (UPS) system of sufficient output to provide constant operating power for the computer equipment being used for a period of time sufficient to allow for manual or automatic transfer from the public service ac power to localized auxiliary ac power. Capacity of the UPS system during emergencies shall be consistent with the requirements detailed in 3-1.4. However, in no case shall the capacity be less than 4 hours.

3-12.3.3 Computer Systems Requirements.

3-12.3.3.1 The following performance requirements are provided as a minimum in equipment selection and system design.

(a) The system shall accommodate the call volumes and other sizing parameters required by the authority having jurisdiction.

(b) The system shall provide the operational capabilities required by the authority having jurisdiction.

(c) The system response time, full load, measured from the time a console operator completes a keyboard entry to the completion of the return of the system response to the CRT screen, shall not exceed five 5 seconds.

(d) Reliability of the CAD system shall be such that the probability that the system is fully functional shall be not less than 98 percent of the time and that the probability of the system being partially operational shall be not less than 99.9 percent of the time.

(e) The CAD system hardware shall be configured so that failure of any single device shall not disable the system.

3-12.3.3.2 Computers shall meet the following applicable approved Electronics Industries Association (EIA) code requirements and other such requirements associated with good engineering and manufacturing practices:

- (a) RS-152-C, *Land Mobile Communications*
- (b) RS-316-O, *Land Mobile Communications*
- (c) RS-316-C, *Portable Land Mobile Communications*
- (d) RS-374-A, *Land Mobile Signaling Standard*.

3-12.3.4 Applications Software and Data Base Support.

3-12.3.4.1 The CAD system applications shall be written in a structured programming language. The software shall be modular, fully documented in the source code, and designed and implemented in accordance with the accepted standard of software engineering.

3-12.3.4.2 The CAD system applications shall run under the overall control of a standard operating system. The operating system shall include support functions and features as established by the authority having jurisdiction.

3-12.3.4.3 The data files shall be maintained and updated in an on-line interactive mode, generally using administrative CRT terminals. A set of operator commands, data entry screens, and related software shall be provided to support the on-line update transactions for all user-modified files.

3-12.3.5 Computers.

3-12.3.5.1 The CAD system shall be based on two identical CPUs, designated A and B.

3-12.3.5.2 The mass storage configuration of CPUs A and B shall maintain redundant copies (mirror images) of all critical CAD on-line files and shall provide protection from detrimental effect from failure or maintenance outage of any single disk, tape drive, or device controller; shall permit connection of any device to the CPU independently of the other devices; and shall be automatically reconfigurable under software control.

3-12.3.5.3 Central Processing Units (CPUs).

3-12.3.5.4 The two CPUs shall be identical processors. Each processor shall be initially equipped with sufficient real main memory and I/O (input and output) capacity to support all of the software functions and meet the performance requirements. The processors shall include the following features:

- (a) Automatic bootstrap loader,
- (b) Time and date capability,
- (c) Programmable interval timer, and
- (d) Power-fail recovery capability.

3-12.3.5.5 The on-line CAD system CPU shall continuously monitor its peripheral devices and interfaces for equipment failures, device exceptions, and timeouts. Upon detection of a failure, the CPU shall perform any appropriate reconfiguration (i.e., bring the back-up disk on-line or transfer control to the back-up CPU) and shall queue notification messages to the supervisor and CPU console terminal.

3-12.3.5.6 The back-up CPU shall continuously monitor the operation of the on-line CPU by means of periodic inquiries requiring positive acknowledgments. In the event of a negative acknowledgment or timeout, the back-up CPU shall immediately seize the on-line disk(s) and peripherals and assume the operation of the on-line CAD applications.

3-12.3.5.7 In addition to the requirements of 3-12.4.1, the operator shall have the capability to manually initiate CPU switchovers and peripheral device reconfigurations and reassignments by means of operating system commands at the CPU console terminal(s).

3-12.3.5.8 Console Terminal. Each CPU shall have its own dedicated console terminal. The terminal shall include an operator keyboard and a printer for a hardcopy log of computer-operator messages and transactions.

3-12.3.5.9 Storage Network.

(a) *Disk Units.* The CAD systems shall provide on-line storage for programs and data to meet all of the functional and performance requirements, but in no case shall there be less than one disk unit per CPU.

(b) *Mass Storage Unit.* Sufficient capacity shall be provided for storage of a minimum of 100 days of history log data.

3-12.3.6 Dispatch Screens and Function Keyboards.

3-12.3.6.1 There shall be not less than one CRT screen and keyboard for each CPU installed.

3-12.3.6.2 There shall be not less than one CRT screen and keyboard for each call taker/dispatch position.

3-12.3.6.3 There shall be not less than one spare CRT screen and keyboard available on the premises for immediate change out for every three operator positions, or portion thereof, up to a maximum of three spare CRT screens and keyboards. For the purpose of this section, any additional administrative CRT screens and keyboards over and above those required for dispatching positions and not considered essential to the dispatching of emergencies can be considered as spares.

3-12.3.6.4 CRT Screens.

(a) The CRT display shall have graphics capability suitable for at least the partitioning of the screen with boundary lines and the display of simple map and floor plan line drawings.

(b) The CRT screen size shall have the capacity to display the information required by the authority having jurisdiction.

(c) Characters shall be displayed in a manner acceptable to the authority having jurisdiction (i.e., bright and dim intensities, blinking, blanking, reverse video, or color). Display intensities shall be operator adjustable from completely dark to maximum CRT brightness. All characters shall be easily visible in a normally lighted room. The CRT display shall be stable and jitter-free. Characters shall have a uniform appearance on all parts of the screen.

3-12.3.6.5 Keyboards.

(a) A keyboard shall be provided at each operation position. The keyboard shall be capable of controlling all CAD operational functions as well as all CRT displays associated with the specific operating position.

(b) The keyboard design shall prevent malfunction due to key "bounce," simultaneous closure of multiple keys, or spillage of consumable liquids. The keys shall be formed to prevent dirt and dust from obliterating the legends.

3-12.3.7 Printers.

3-12.3.7.1 The CAD system shall include printers for dispatching, logging, and administrative utility functions.

3-12.3.7.2 All printers shall be interchangeable, and logging or utility functions shall be assignable to any printer under system control.

3-12.3.7.3 The authority having jurisdiction shall determine the following minimum characteristics:

- (a) Print speed,
- (b) Maximum adjustable form size,
- (c) Total number of copies, and
- (d) Weight of paper stock.

3-12.3.8 Information Transmittal. Data communications systems, interfaced with the CAD system, shall provide digital communications between the CAD system remote fire stations, administrative sites, and mobile fire department vehicles, at a rate not less than 600 baud.

3-12.3.8.1 Where radio frequency, wired circuitry, or a combination thereof is used, each method used shall meet all applicable requirements in this standard for the use of radio frequency transmission or wired circuitry as a primary method of fire service dispatching.

3-12.3.8.2 The transmission of computer information to mobile equipment or fixed locations associated with fire and rescue operations shall be in accordance with Federal Communications Commission (FCC) approved radio frequency channel use for the particular type of service being used.

3-12.3.8.3 The message formats shall be defined by the authority having jurisdiction.

3-12.3.9 Time Synchronization. The CAD system CPU clocks shall be synchronized continuously.

3-12.3.10 Remote Data Terminals (RDTs).

3-12.3.10.1 General.

(a) The CAD system shall initialize the data communications by means of an "all-call" message (or series of messages). The "all-call" shall accomplish at least the following functions:

- (1) Display a "system is up" message.
 - (2) Download forms not permanently stored at all RDTs.
 - (3) Poll terminals to request current status and update CAD status files and displays accordingly.
- (b) CAD system transmissions to RDTs shall be as follows:

- (1) Emergency messages shall take priority and shall be immediately indicated and printed if printers are included in the system.
- (2) After transmission of a message, the RDT shall acknowledge by both automatic and manual means. The RDT shall transmit automatic acknowledgment indicating that it has received and stored the message. A manual acknowledgment shall indicate that the field personnel have viewed the message and are taking appropriate action.

(3) Failure to receive an automatic or manual acknowledgment from the RDT shall cause a notification on the originating operator CRT screen in the communication center.

(4) RDT display shall not be automatically updated. Displays shall be configured to indicate that a message is waiting. (See 3-12.3.)

3-12.3.10.2 The RDT terminals shall meet all requirements set forth in EIA RS-374-A, *Land Mobile Signaling Standard*, March 1981.

(a) The RDTs shall be interchangeable, such that any RDT can be installed in any vehicle or fixed location. The RDT shall connect to its associated radio transceiver by a plug-in locking-cable assembly.

(b) The RDT keyboard shall provide the ability to perform all functions as required by the authority having jurisdiction, while keeping keystrokes to a minimum. The terminal shall provide one keystroke operation for unit status reporting functions. The terminal shall display information with minimum use of multipage display.

(c) The RDTs shall have manual controls mounted on the unit for:

- (1) Display intensity,
- (2) Audible alarm volume,
- (3) Alarm test, and

(4) Power on/off. The power on/off shall include a visual indication that the unit is energized.

(d) The RDTs shall activate both audible and visual indication of incoming messages. Audio alarm shall be of sufficient volume to overcome ambient noise levels as determined by the authority having jurisdiction.

(e) The RDTs shall have a last in/first out feature that shall allow the user to recall the last message transmitted or received.

(f) Each RDT shall have an individual addressing identifier and shall be capable of receiving single, group, or all-call messages. The RDT terminal address identifier shall be transmitted automatically through the control CPU(s) for each message.

(g) The RDT shall continuously display both current unit and terminal status.

(h) The RDT shall display current unit status as determined by the authority having jurisdiction.

(i) The RDT shall display current status and shall include the following:

(1) *Transmitter Keyed*. Indicates a message sent by the RDT is currently being transmitted.

(2) *Message Received*. Indicates the last transmission has been correctly received by the communication center.

(3) *No Ack/Fail*. Indicates a transmission was not received after a predetermined number of retransmissions.

(4) *Channel Busy*. Indicates that the terminal cannot transmit due to other traffic on the frequency, and the message will be sent as soon as the frequency is clear; no manual retransmission is necessary.

(5) *Message Waiting*. Indicates that a new message is waiting to be sent to the terminal and the operator must clear the page to allow the message to be accepted.

(6) *Ack Required*. Indicates that a manual acknowledgment by the operator of a received message is required.

3-12.3.10.3 Keyboard Design.

(a) The terminal shall be equipped with an alphanumeric keyboard that meets the requirements of 3-12.3.10.2.

(b) If the keyboard is detachable, the bottom shall have a non-skid surface to prevent the unit from sliding if placed on a slippery surface.

3-12.3.10.4 The RDTs shall not require current to maintain programmed functions when the power to the unit is turned off.

3-12.3.11 Display Functional Requirements.

3-12.3.11.1 The display size shall have the capacity to present the information as required by the authority having jurisdiction.

3-12.3.11.2 Characters shall be displayed in a manner acceptable to the authority having jurisdiction (i.e., bright and dim intensities, blinking, blanking, reverse video, or color). Display intensities shall be continuously variable by the operator from completely dark to maximum brightness. All characters shall be easily visible in daylight conditions. The display shall be stable and jitter-free. Characters shall have a uniform appearance on all parts of the screen.

3-12.4 Class 2 CAD System.

3-12.4.1 Computers. The minimum standards required in a Class 1 fire service CAD system shall apply.

Exception No. 1: The CAD system shall be based on two identical CPUs.

Exception No. 2: Computers used in a Class 2 system shall not be required to have complete redundancy.

Exception No. 3: Automatic switchover shall not be required as a standard; however, a fault detection system shall be employed to detect computer failure and to subsequently alert the control console by visual and audio means.

3-12.4.2 Console Equipment. The minimum standards contained in 3-12.3.3 for Class 1 fire service CAD systems shall apply.

3-12.4.3 Information Transmittal. The minimum standards contained in Class 1 fire service CAD systems shall apply.

3-12.5 Class 3 CAD System.

NOTE: Computers shall be permitted to be of a microprocessor type, or larger, with limited storage and memory capacity.

3-12.5.1 Redundancy capabilities shall not be required in a Class 3 system.

3-12.5.2 One master hard copy printer for logging purposes shall be required. Program entry changes shall not be required to have protected command entry code. Priority override shall not be a requirement.

Chapter 4 Referenced Publications

4-1 The following documents or portions thereof are referenced within this standard and shall be considered part of the requirements of this document. The edition indicated for each reference is the current edition as of the date of the NFPA issuance of this document.

4-1.1 NFPA Publications. National Fire Protection Association, 1 Batterymarch Park, P.O. Box 9101, Quincy, MA 02269-9101.

NFPA 10, *Standard for Portable Fire Extinguishers*, 1994 edition.

NFPA 13, *Standard for the Installation of Sprinkler Systems*, 1994 edition.

NFPA 37, *Standard for the Installation and Use of Stationary Combustion Engines and Gas Turbines*, 1994 edition.

NFPA 54, *National Fuel Gas Code*, 1992 edition.

NFPA 58, *Standard for the Storage and Handling of Liquefied Petroleum Gases*, 1992 edition.

NFPA 70, *National Electrical Code*, 1993 edition.

NFPA 72, *National Fire Alarm Code*, 1993 edition.

NFPA 75, *Standard for the Protection of Electronic Computer/Data Processing Equipment*, 1992 edition.

NFPA 101, *Life Safety Code*, 1994 edition.

NFPA 110, *Standard for Emergency and Standby Power Systems*, 1993 edition.

NFPA 220, *Standard on Types of Building Construction*, 1992 edition.

NFPA 255, *Standard Method of Test of Surface Burning Characteristics of Building Materials*, 1990 edition.

NFPA 256, *Standard Methods of Fire Tests of Roof Coverings*, 1993 edition.

4-1.2 Other Publications.

4-1.2.1 EIA Publications. Electronics Industries Association, Engineering Department, 2001 I Street, NW, Washington, DC 20006.

RS-152-C, *Land Mobile Communications* (December 1988).

RS-204-D, *Land Mobile Communications* (May 1988).

RS-316-C, *Portable Land Mobile Communications* (August 1990).

RS-374-A, *Land Mobile Signaling Standard* (March 1981).

4-1.2.2 U.S. Government Publication. U.S. Government Printing Office, Washington, DC 20025.

Code of Federal Regulations, Federal Communications Commission, Title 47, Part 90, "Private Land Mobile Radio Services," 1990.

4-1.2.3 IEEE Publication. Institute of Electrical and Electronics Engineers, Inc., 345 East 47th Street, New York, NY 10017.

ANSI/IEEE C2-1990, *National Electrical Safety Code*.

4-1.2.4 IMSA Publication. International Municipal Signal Association, P.O. Box 539, Newark, NY 14513.

IMSA Official Wire and Cable Specification Manual, 1992.

Appendix A Explanatory Material

This Appendix is not a part of the requirements of this NFPA document but is included for informational purposes only.

A-1-3 Definitions.

Approved. The National Fire Protection Association does not approve, inspect, or certify any installations, procedures, equipment, or materials; nor does it approve or evaluate testing laboratories. In determining the acceptability of installations, procedures, equipment, or materials, the authority having jurisdiction may base acceptance on compliance with NFPA or other appropriate standards. In the absence of such standards, said authority may require evidence of proper installation, procedure, or use. The authority having jurisdiction may also refer to the listings or labeling practices of an organization concerned with product evaluations that is in a position to determine compliance with appropriate standards for the current production of listed items.

Authority Having Jurisdiction. The phrase "authority having jurisdiction" is used in NFPA documents in a broad manner, since jurisdictions and approval agencies vary, as do their responsibilities. Where public safety is primary, the authority having jurisdiction may be a federal, state, local, or other regional department or individual such as a fire chief; fire marshal; chief of a fire prevention bureau, labor department, or health department; building official; electrical inspector; or others having statutory authority. For insurance purposes, an insurance inspection department, rating bureau, or other insurance company representative may be the authority having jurisdiction. In many circumstances, the property owner or his or her designated agent assumes the role of the authority having jurisdiction; at government installations, the commanding officer or departmental official may be the authority having jurisdiction.

Box Circuit. A circuit connected to boxes that transmit an alarm to the communication center. In Type B systems, box circuits usually connect to receiving equipment at fire stations.

Circuit. The conductor, or radio channel, and associated equipment used to perform a definite function in connection with an alarm system. Specific types of circuits are defined below.

Listed. The means for identifying listed equipment may vary for each organization concerned with product evaluation, some of which do not recognize equipment as listed unless it is also labeled. The authority having jurisdiction should utilize the system employed by the listing organization to identify a listed product.

A-2-1.4.4 The communication center should be provided with self-contained breathing apparatus meeting the requirements of NFPA 1981, *Standard on Open-Circuit Self-Contained Breathing Apparatus for Fire Fighters*, for all essential operating personnel in the event of a fire in the communication center.

A-2-1.9.1 For additional information, refer to NFPA 297, *Guide on Telecommunications Systems—Principles and Practices for Rural and Forestry Services*.

Table A-2-1.10.2.2(b) The following procedure is recommended for checking state of charge:

Switch the battery charger from float to high-rate mode.

The current, as indicated on the charger ammeter, will immediately rise to the maximum output of the charger, and the battery voltage, as shown on the charger voltmeter, will start to rise at the same time.

The actual value of the voltage rise is unimportant, since it depends on many variables; the length of time it takes for the voltage to rise is the important factor.

If, for example, the voltage rises rapidly in a few minutes, then holds steady at the new value, the battery was fully charged. At the same time, the current will drop to slightly above its original value.

In contrast, if the voltage rises slowly and the output current remains high, the high-rate charge should be continued until the voltage remains constant. Such a condition is an indication that the battery was not fully charged, and the float voltage should be increased slightly.

A-2-1.12.4 Performance statistics should be gathered and maintained annually in accordance with 2-1.8.1(a)(1) and 2-1.8.1(a)(2).

A-2-1.13.2 Planning Guidelines for Universal Emergency Number (9-1-1) Systems.

This document is intended as a guide to assist those jurisdictions contemplating or actually planning 9-1-1 systems. There are three parts to the document:

- (a) Feature definitions,
- (b) Jurisdiction characteristics,
- (c) Feature versus characteristics correlation.

In the feature definition section, all known 9-1-1 features are described. It should be noted, however, that this is a listing of all features and that not all features are technically compatible with one another. Furthermore, certain features can only be provided if special equipment is available in the telephone company central office. Your local telephone company should be consulted as early as possible when planning a 9-1-1 system.

The second section considers various characteristics of municipalities that would influence the feature complement of a 9-1-1 system.

A graph is included in the third section that relates municipal characteristics to 9-1-1 features.

It must be emphasized that these notes are only a planning guideline. Each jurisdiction has its own unique set of characteristics that must be evaluated and matched to a set of 9-1-1 features.

I. Feature Definitions.

Automatic Location Identification (ALI). Displays the calling party's address and other preselected information at the PSAP attendant position.

Automatic Number Identification (ANI). Displays the calling party's telephone number at the PSAP attendant position.

Call Detail Recording (CDR). Provides a hard copy printout after every call of the ANI number, trunk number, and answering attendant number; and the time of seizure, answer, disconnect/transfer.

Called Party Hold. Allows the PSAP attendant to hold the established connection to the station from which the 9-1-1 call was originated, regardless of calling party action.

Default Routing. Provides routing of 9-1-1 calls to a predetermined PSAP when it is not possible to route a call to its primary PSAP.

Emergency Ringback. Allows the PSAP attendant to ring the calling station regardless of the station switch-hook status.

Forced Disconnect. Enables the PSAP attendant to terminate, at any time, an existing 9-1-1 call regardless of the action of the calling party.

Idle Tone Application. Gives the PSAP attendant an audible indication if the 9-1-1 caller abandons before the attendant answers the call or if the 9-1-1 caller terminates the call after the attendant answers the call.

Night Service/Alternate Routing. Calls are routed to an alternate PSAP when:

- (a) All trunks are busy to a PSAP, or
- (b) A PSAP closes down for a period of time.

Public Safety Answering Point (PSAP). Any facility where 9-1-1 calls are answered, either directly or through rerouting.

Selective Routing. Routes a 9-1-1 call to the correct PSAP based on the calling party's telephone number, regardless of jurisdiction and telephone company central office boundary mismatches.

Switch-Hook Status. Provides a visual and/or audible indication of whether the originating station on an established 9-1-1 call is on-hook or off-hook.

Transfer. Allows an incoming 9-1-1 call to be rerouted from one PSAP to another. There are three generic types of transfer:

- (a) *Manual.* Voice only is rerouted using a series of operations at the attendant console.
- (b) *Fixed.* Voice, ANI, and ALI are rerouted to a specific secondary PSAP by pressing a button associated with the desired PSAP.
- (c) *Selective.* Voice, ANI, and ALI are rerouted to any number of secondary PSAPs based on the telephone number of the calling party by the operation of a single button.

II. Jurisdictional Characteristics.

Number of 9-1-1 Centers. The number of 9-1-1 emergency reporting centers [or Public Safety Answering Points (PSAP)] is one of the key factors that should be considered in planning a 9-1-1 system. If multiple answering points are located throughout the system (jurisdiction), then there are many factors that will influence the way in which 9-1-1 calls are handled. For instance, telephone company and jurisdiction boundaries are rarely coincident. Thus, calls will be routed to improper answering points, and time delays will be encountered in handling or rerouting the 9-1-1 calls.

On the other hand, having a single answering point minimizes the boundary problem. However, other functions such as dispatch become more difficult.

When planning a 9-1-1 system, many factors should be considered. The administrative and operational procedures of the answering bureau and the available 9-1-1 system features should be carefully reviewed.

Location of Fire Dispatch Center. If the 9-1-1 center (PSAP) is the main dispatch center for fire services, the center should meet the requirements of this standard.

Force Utilization. Both the number and type of personnel that will be handling 9-1-1 calls should be considered when planning a 9-1-1 system. For instance, if a large percentage of calls must be rerouted (i.e., calls are answered by personnel not affiliated with any particular emergency agency), then 9-1-1 features that provide for the expeditious handling of calls should be considered.

If the primary objective is to optimize force, then 9-1-1 features that minimize the number of misrouted calls should be considered.

Third-Party Call Handling and Conference Calls. The characteristics of a particular jurisdiction might require the frequent use of interpreters or subsidiary centers (secondary Public Safety Answering Points). This requires frequent rerouting and conferencing of 9-1-1 calls. The 9-1-1 system features that provide expeditious call handling under these conditions should be considered where this poses a severe problem.

Improper Call Termination by Call Originator. When the calling party does not hang up after a 9-1-1 call, whether deliberate or accidental, telephone facilities will be tied up for a time, limiting access to the 9-1-1 center by other emergency callers. Where this might be a problem, 9-1-1 system features and quantities of telephone access facilities should be reviewed.

Inadequate or Untimely Location Information. In some jurisdictions or portions thereof, there could be a higher incidence of calls where location information is inadequate or untimely due to such circumstances as inability of the caller to talk, a speech or hearing problem, a prank call, or a false alarm. Where the frequency of such occurrences hampers the effectiveness or costs of the municipalities' emergency services, administrative procedures, operational plans, and 9-1-1 system features should be reviewed.

Computer-Aided Dispatching (CAD). Many jurisdictions are considering or are already employing a CAD system. Several 9-1-1 system features complement CAD systems and should be very carefully considered when planning a 9-1-1 system with a CAD interface.

Fire Emergency Call Handling. In most cases, 9-1-1 fire calls will not be routed directly to fire dispatch centers. The first response centers will be required to reroute the calls to the appropriate fire communication center. Therefore, 9-1-1 features that minimize call handling time (especially rerouting) should be considered when planning a 9-1-1 system.

Recommended 9-1-1 System Feature Groupings. Forced disconnect and transfer should always be provided. Forced disconnect to prevent the system from being tied up, and transfer to ensure expeditious handling of calls.

Either ANI or Called Party Hold, Idle Tone Application, Switchhook Status, and Emergency Ringback should be provided. This will be referred to as basic calling party status identification.

It should be noted that some features are incompatible with one another from a technical point of view (i.e., ANI, SR, ALI are incompatible with Switchhook Status, Emergency Ringback, and Called Party Hold). Also, certain features can only be provided if special equipment is available in the telephone company central office. Your local telephone company should be consulted when planning for a 9-1-1 system.

III. Features to Be Considered for Various Jurisdictional Characteristics.

A-3-1.3.2 Separate support structures for the duplicate antennas are not required, provided the structure is adequately constructed.

Table A-3-1.5.3.2(b) See Table A-2-1.10.2.2(b).

A-3-6.2 When noise levels are excessive, noise canceling microphones and noise attenuating headsets should be provided.

A-3-11.2.7 Facilities should be provided for the auxiliary supply of compressed air in case of compressor or power failure. These facilities can be either manifolds and regulators for connection of high-pressure cylinders, fittings for the supply of compressed air from external self-powered compressors, or supply of air from vehicle air brake compressors.

Force Third Party

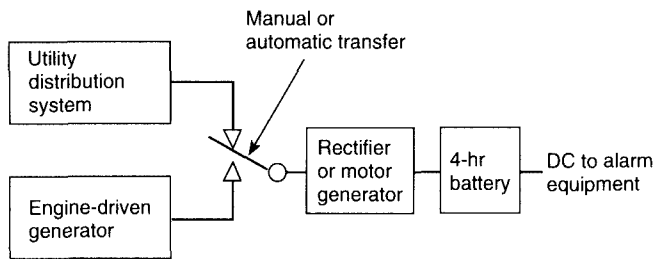
Character Feature	Number of 9-1-1 Centers	Utilization Calls	Conference Termination	Improper Calls	Location Information	Computer Aided Dispatch	Fire Call
All					X	X	
CDR					X	X	
Calling party status*					X		
Alternate routing†		X		X			
Forced disconnect				X			
Selective routing	X	X					X
Transfer	X	X	X				X

*Called Party Hold, Emergency Ringback, Switchhook Status, Idle Tone Application, or ANI.

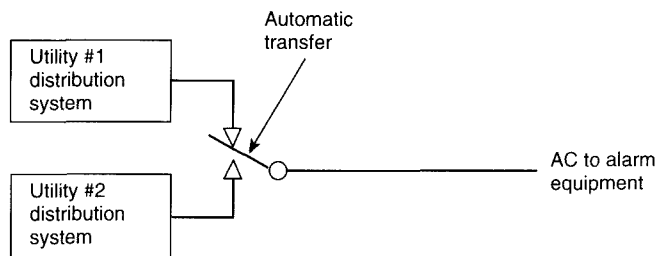
†Default Routing, Night Transfer, or Alternate Routing.

Appendix B

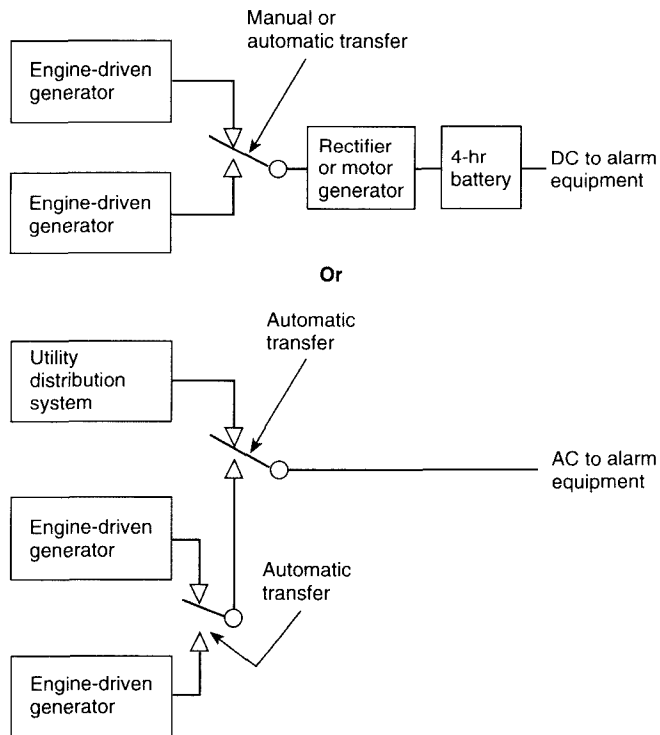
This Appendix is not a part of the requirements of this NFPA document but is included for informational purposes only.



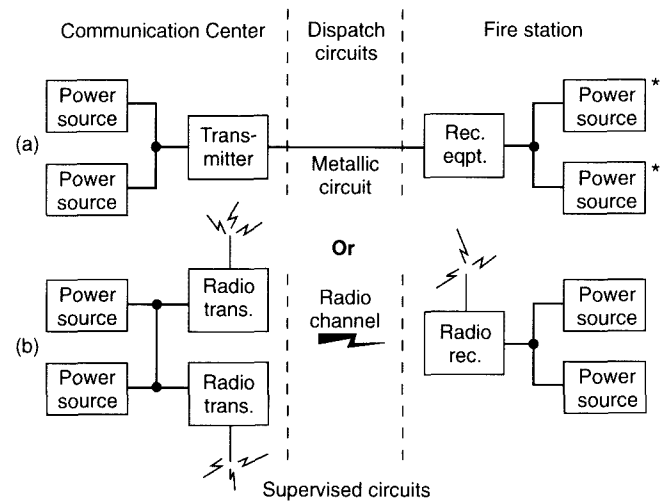
Figures B-2-1.6.2(a)/B-3-1.4.2(a).



Figures B-2-1.6.2(b)/B-3-1.4.2(b).



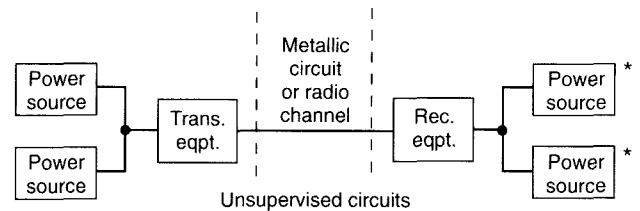
Figures B-2-1.6.2(c)/B-3-1.4.2(c).



*Required if not powered from the communication center.

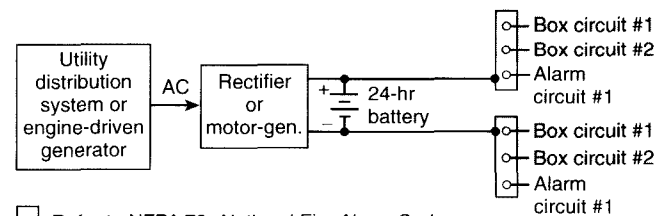
NOTE: The power sources shown above are shown for reference only and do not constitute a portion of the supervised circuit.

Figure B-3-1.3.2.



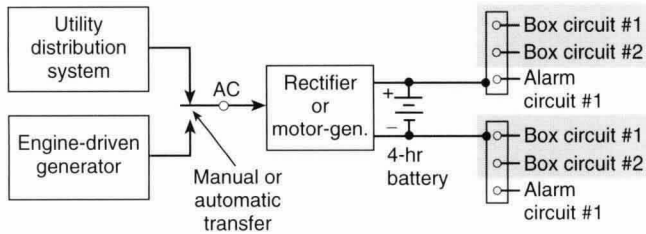
*Required if not powered from the communication center.

Figure B-3-1.3.3.



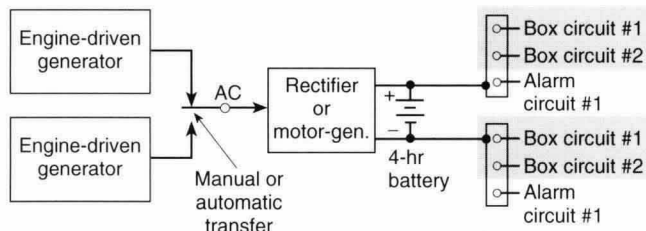
Refer to NFPA 72, National Fire Alarm Code

Figure B-3-1.4.3.2(a).



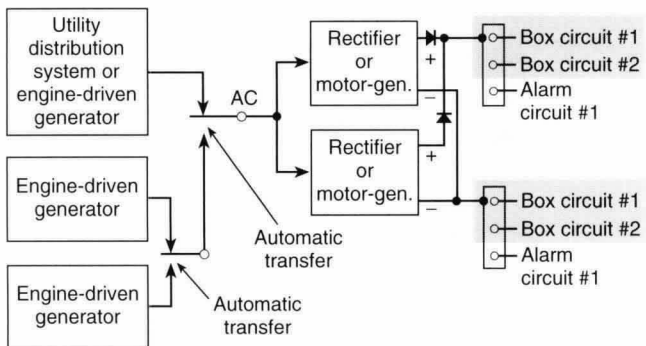
Refer to NFPA 72, *National Fire Alarm Code*

Figure B-3-1.4.3.2(b)(1).



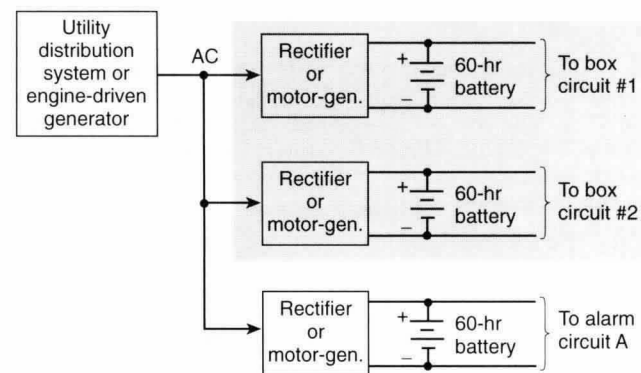
Refer to NFPA 72, *National Fire Alarm Code*

Figure B-3-1.4.3.2(b)(2).



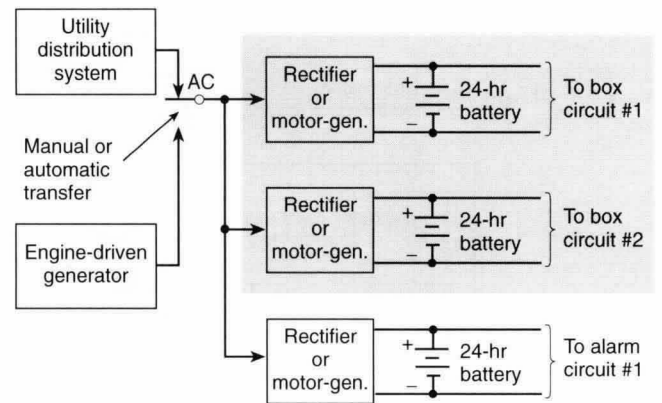
Refer to NFPA 72, *National Fire Alarm Code*

Figure B-3-1.4.3.2(c).



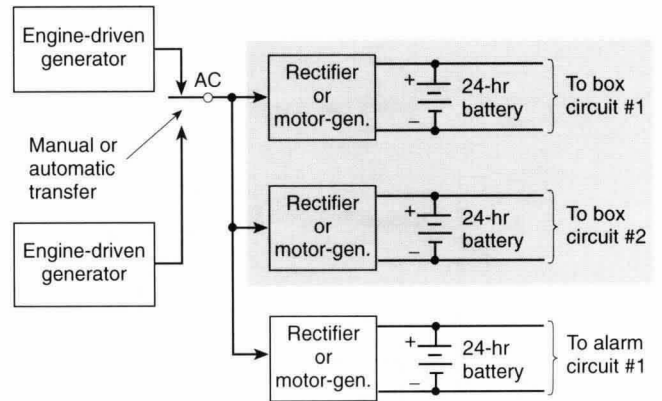
Refer to NFPA 72, *National Fire Alarm Code*

Figure B-3-1.4.3.3(a).



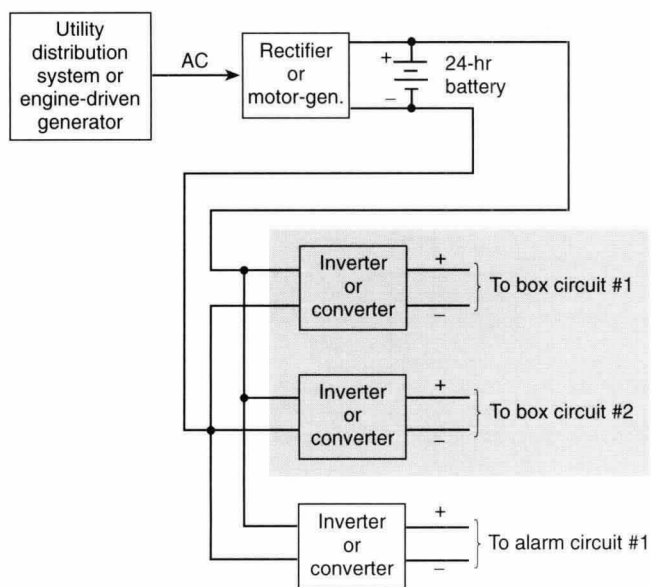
Refer to NFPA 72, *National Fire Alarm Code*

Figure B-3-1.4.3.3(b)(1).



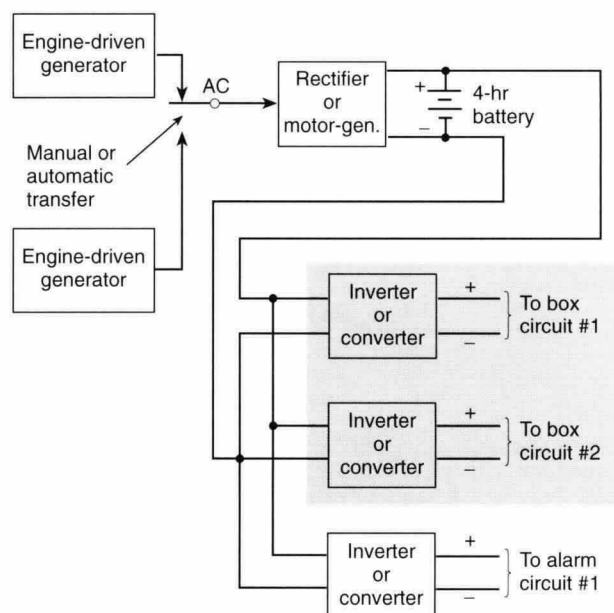
Refer to NFPA 72, *National Fire Alarm Code*

Figure B-3-1.4.3.3(b)(2).



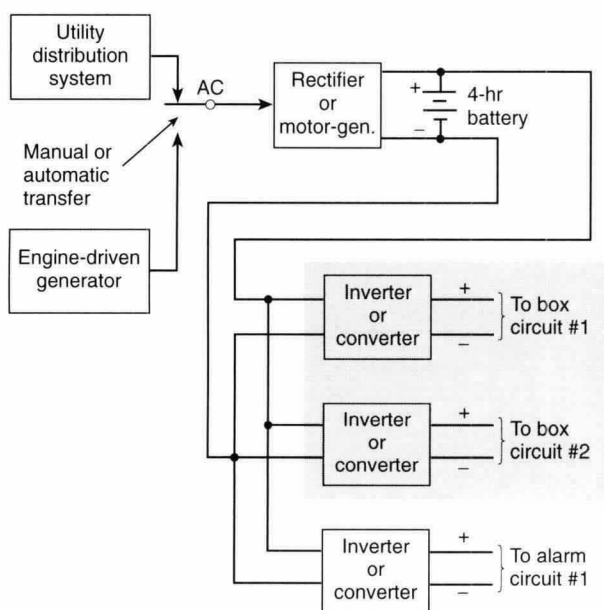
Refer to NFPA 72, *National Fire Alarm Code*

Figure B-3-1.4.3.4(a).



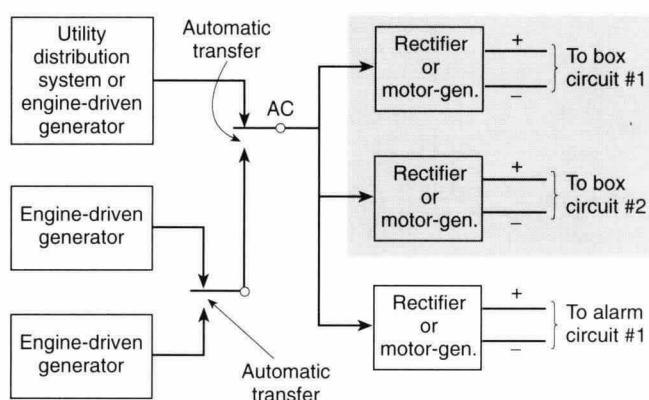
Refer to NFPA 72, *National Fire Alarm Code*

Figure B-3-1.4.3.4(b)(2).



Refer to NFPA 72, *National Fire Alarm Code*

Figure B-3-1.4.3.4(b)(1).



Refer to NFPA 72, *National Fire Alarm Code*

Figure B-3-1.4.3.4(c).

Appendix C Referenced Publications

C-1 The following documents or portions thereof are referenced within this standard for informational purposes only and thus are not considered part of the requirements of this document. The edition indicated for each reference is the current edition as of the date of the NFPA issuance of this document.

C-1-1 NFPA Publications. National Fire Protection Association, 1 Batterymarch Park, P.O. Box 9101, Quincy, MA 02269-9101.

NFPA 72, *National Fire Alarm Code*, 1993 edition.

NFPA 297, *Guide on Telecommunications Systems—Principles and Practices for Rural and Forestry Services*, 1986 edition.

NFPA 1981, *Standard on Open-Circuit Self-Contained Breathing Apparatus for Fire Fighters*, 1992 edition.

Index

© 1994 National Fire Protection Association, All Rights Reserved.

The copyright in this index is separate and distinct from the copyright in the document which it indexes. The licensing provisions set forth for the document are not applicable to this index. This index may not be reproduced in whole or in part by any means without the express written permission of the National Fire Protection Association, Inc.

-A-

- Aerial construction, dispatch system** 3-1.10
 - Telephone dispatch system 3-8.2.3
 - Wired dispatch system 3-2.4
- Alarm systems**
 - For communications centers 2-1.4.2
 - Private 2-1.13.1.3(i), 3-1.7.6
 - Records 2-1.11.2, 2-1.12.1 to 2-1.12.2
- Alarms**
 - Definition 1-3
 - Public reporting at fire stations 2-2.5
 - Recording of 2-1.9.1, 2-1.13.1.3(e) to (g), 3-1.3.7 to 3-1.3.8, A-2-1.9.1
 - Response to 2-1.8.1.1
 - Transmission to fire department companies ... 2-1.9.2 to 2-1.9.3, 2-1.13.1.3(d), 3-1.3.5, 3-5.6, 3-5.9
 - Wiring 3.1.10.1
- Alternate communications facility** 2-1.1.3, 2-1.4.4, A-2-1.4.4
- Approved (definition)** 1-3, A-1-3
- Authority having jurisdiction (definition)** 1-3, A-1-3

-B-

- Batteries**
 - Common batteries (definition) 1-3
 - Communication center power supply 2-1.6.5.7, 2-1.6.6
 - Dispatch systems 3-1.4.5.8, 3-1.4.6
 - Standby 2-1.6.2(c)
 - Testing 2-1.10.2.2, 3-1.5.3.2, 3-3.4.3, A-2-1.10.2.2(b), A-3-1.5.3.2(b)
- Baud (definition)** 1-3
- Box circuit (definition)** A-1-3

-C-

- Cables, dispatch system** 3-1.9
- CAD (computer-aided dispatching) systems** ... *see* Computer-aided dispatching (CAD) systems
- Central processing units (CPUs)** 3-12.3.5.1 to 3-12.5.9
 - Definition 1-3
- Certification (definition)** 1-3
- Channels**
 - Definition 1-3
 - Duplex operation (definition) 1-3
 - Radio
 - Definition 1-3
 - Records of 3-4.6.2
- Circuit conductors** 2-1.7.1, 3-1.8
- Circuit protection** 3-1.4.1.3
 - Radio dispatch systems 3-4.2
 - Telephone dispatch systems 3-8.2
 - Wired dispatch systems 3-2.4, 3-3.7
- Circuits**
 - Definition 1-3, A-1-3
 - Dispatch *see* Dispatch circuits
 - 9-1-1 service 2-1.13.2.2
 - Records 3-1.6.2
- Common batteries (definition)** 1-3
- Communication centers** 2-1, A-2-1
 - Access limited to authorized personnel 2-1.2.6
 - Alarms to fire station from 3-5.6, 3-5.9
 - Alternate 2-1.1.3, 2-1.4.4, A-2-1.4.4
 - Circuit protection 3-8.2

- Construction 2-1.2
- Definition 1-3
- Emergency lighting 2-1.5
- Equipment testing 2-1.10
- Fire protection 2-1.4, A-2-1.4.4
- Location 2-1.1
- Maintenance 2-1.11
- Management 2-1.11
- Operating practices 2-1.9, A-2-1.9.1
- Power 2-1.5, 2-1.10.2, Figs. B-2-1.6(a) to (c)
- Radio dispatch systems *see* Radio dispatch systems
- Records 2-1.12
- Staffing 2-1.8
- Subsidiary *see* Subsidiary communication centers
- Telephone dispatch systems 3-8
- Telephone receiving equipment 2-1.13
- Utilities 2-1.3
- Wired dispatch systems *see* Wired dispatch systems
- Wiring 2-1.7, 2-1.12.5
- Computer-aided dispatching (CAD) systems** 3-12
 - Class 1 3-12.2.1, 3-12.3
 - Applications software and data base support 3-12.3.4
 - Auxiliary power 3-12.3.2
 - Central processing units (CPUs) 3-12.3.5.1 to 3-12.5.9
 - Computer system 3-12.3.3, 3-12.3.5
 - Console terminal 3-12.3.8
 - Dispatch screens 3-12.3.6.1 to 3-12.3.6.4
 - Display functional requirements 3-12.3.11
 - Function keyboards 3-12.3.6.1 to 3-12.3.6.3, 3-12.3.6.5
 - Information transmittal 3-12.3.8
 - Printers 3-12.3.7
 - Remote data terminals (RDTs) 3-12.3.10
 - Storage network 3-12.3.5.9
 - Time synchronization 3-12.3.9
 - Class 2 3-12.2.2, 3-12.4
 - Class 3 3-12.2.3, 3-12.5
 - Classification of systems 3-12.2
 - Definition 1-3
 - Dispatch capabilities 3-12.1.4
 - Support dispatch information 3-12.1.3
- Converters (definition)** 1-3; *see also* Rectifiers
- CPUs (Central processing units)** 3-12.3.5.1 to 3-12.5.9
 - Definition 1-3
- CRT (Cathode ray tube)**
 - Definition 1-3

-D-

- Definitions** 1-3, A-1-3
- Detection systems, communications center** 2-1.4.2
- Directory listing, telephone** 2-1.13.1.2
- Dispatch circuits** 3-1.3, A-3-1.3.2, Figs. B-3-1.3.2 to B-3-1.3.3, Figs. B-3-1.3.3; *see also* Circuit protection
 - Circuit conductors 3-1.8
 - Construction and arrangement 3-1.7
 - Radio dispatch 3-4.1.1, 3-4.2, 3-4.4.1 to 3-4.4.2, 3-4.4.5 to 3-4.4.6, 3-4.6.2, 3-4.13
 - Telephone dispatch systems 3-8.2, 3-8.5
- Dispatch systems** Chap. 3
 - Aerial construction *see* Aerial construction, dispatch system
 - Cables 3-1.9
 - CAD *see* Computer-aided dispatching (CAD) systems
 - Equipment and installation 3-1.2
 - Fundamental requirements 3-1

Leads down poles	3-1.11
Off-shift fire fighters, alerting of	3-11, A-3-11.2.7
Operating practices	3-1.6.3
Power	3-1.4, 3-1.5.3, Figs. B-3-1.4.2(a) to (c), Figs. B-3-1.4.3.2 to B-3-1.4.3.4
Radio dispatch systems	<i>see</i> Radio dispatch systems
Recording of dispatching	2-1.9.5
Records	3-1.6
Telephone dispatch systems	<i>see</i> Telephone dispatch systems
Testing	3-1.5
Transmission of other signals	3-1.1.2
Volunteers, alerting of	3-11, A-3-11.2.7
Wired dispatch systems	<i>see</i> Wired dispatch systems
Wiring inside buildings	3-1.12
Duplex operations (definition)	1-3
Dynamotors (definition)	1-3

-E-

Electronic equipment	2-1.4.3.1
Emergency calls	<i>see</i> Alarms
Emergency (definition)	1-3
Emergency generators	2-1.6.2(c), 2-1.12.6, 3-1.6.4
Testing	3-3.4.2
Emergency lighting	2-1.5, 2-1.6.5.6
Engine-driven generators	2-1.6.2(c), 2-1.6.5, 3-1.4.5, 3-1.5.3.1
Definition	1-3
Equipment	<i>see also</i> Telephone receiving equipment
Dispatching	3-1.2
Electronic	2-1.4.3.1
Radio dispatch	
Mobile	3-6, A-3-6.2
Portable	3-7
Testing	
Communication center	2-1.10, A-2-1.10.2.2(b)
Fire station	2-2.3
Public Safety Answering Point (PSAP)	2-1.13.2.6(c)
Wired dispatch	3-2.5, 3-3.2

-F-

Fire apparatus	3-6, A-3-6.2
Fire companies, status of	2-1.9.4
Fire extinguishers, portable	2-1.4.1
Fire-portable radio devices	3-11.3.2 to 3-11.3.5
Fire protection, communication center	2-1.4, A-2-1.4.4
Fire stations	2-2
Definition	1-3
Power	2-2.1
Public reporting at	2-2.5
Radio dispatch systems	3-5
Telephone dispatch systems	3-9
Telephones	2-2.4, 3-10
Wired dispatch systems	3-3
Wiring, electrical	2-2.2
Frequency, radio (definition)	1-3
Frequency periodic function (definition)	1-3
Fuel storage and installations	2-1.6.5.4 to 2-1.6.5.5, 3-1.4.5.4 to 3-1.4.5.5

-G-

Generators	<i>see</i> Emergency generators; Engine-driven generators; Motor-generators
-------------------------	--------------------------------------------------------------------------------

-I-

Inverters (definition)	1-3; <i>see also</i> Rectifiers
-------------------------------------	---------------------------------

-J-

Jurisdiction (definition)	1-3
----------------------------------------	-----

-L-

Labeled (definition)	1-3
-----------------------------------	-----

Lightning arresters

Telephone dispatch systems	3-8.2.1.2 to 3-8.2.1.3, 3-8.2.2, 3-8.2.16
Wired dispatch systems	3-2.4.1.2 to 3-2.4.1.3, 3-2.4.1.6 to 3-2.4.1.7, 3-3.7.1, 3-3.7.3 to 3-3.7.4

Listed (definition)	1-3, A-1-3
----------------------------------	------------

-M-

Maintenance, communications center	2-1.11, A-2-1.12.4
Management	

Communication center	2-1.11, A-2-1.12.4
System	1-2

Mobile equipment, radio dispatching	3-6, A-3-6.2
--------------------------------------------------	--------------

Modem (modulator demodulator unit)	
Definition	1-3

Motor-generators	2-1.6.4.4, 3-1.4.4.4
Definition	1-3

-N-

9-1-1 service	2-1.8.2.3, 2-1.13.2
Directory listing	2-1.13.1.2(b)
Feature definitions	A-2-1.13.2
Planning guidelines for	A-2-1.13.2

-O-

Off-shift fire fighters, alerting	3-11, A-3-11.2.7
------------------------------------------------	------------------

Operating practices	
Communication centers	2-1.9, A-2-1.9.1
Records of	3-1.6.3

Operations room (definition)	1-3
-------------------------------------------	-----

Operators	2-1.8
Definition	1-3

-P-

Pagers, radio pocket	3-7.1.15, 3-11.3.1, 3-11.3.6
-----------------------------------	------------------------------

Portable equipment, radio dispatching	3-7
----------------------------------------------------	-----

Power	
Auxiliary power, CAD	3-12.3.2
Communication centers	2-1.5, 2-1.10.2
Dispatch systems	3-1.4, 3-1.5.3, 3-3.8
Fire stations	2-2.1

Power source	<i>see also</i> Engine-driven generators; Motor-generators
---------------------------	---------------------------------------------------------------

Communication centers	2-1.6.1, 2-1.6.2
Definition	1-3
Dispatch systems	3-1.4.1, 3-1.4.2, Figs. B-3-1.4.2(a) to (c)
Emergency	2-1.10.2.1; <i>see also</i> Emergency generators
Equipment testing	2-1.10.2
Public Safety Answering Points (PSAP)	2-1.13.2.4

Power supply	
Communication centers	2-1.6.1.3, 2-1.6.1.6, 2-1.6.3
Definition	1-3
Dispatch system	3-1.4.1.2, 3-1.4.3, Figs. B-3-1.4.3.2 to B-3-1.4.3.4

Form 2	3-1.4.3.2
Form 3	3-1.4.3.3
Form 4	3-1.4.3.4
Testing	3-2.7.1, 3-3.4.1
Uninterruptible (UPS)	
Definition	1-3

Protocol (definition)	1-3
------------------------------------	-----

Public reporting systems	
---------------------------------------	--

Definition	1-3
At fire stations	2-2.5

Public Safety Answering Points (PSAP)	A-2-1.13.2
Circuit protection	2-1.13.2.3
Circuits	2-1.13.2.2
Equipment	2-1.13.2.5
Power source	2-1.13.2.4
Testing	2-1.13.2.6

-R-

Radio channels	
Definition	1-3
Records of	3-4.6.2