

# INTERNATIONAL STANDARD

**ISO**  
**9259**

First edition  
1991-09-15

**AMENDMENT 1**  
2001-07-15

---

---

## **Passenger cars — Windscreen wiper systems — Wiper arm-to-blade connections**

### **AMENDMENT 1**

*Voitures particulières — Dispositifs d'essuie-glace — Fixations des balais  
d'essuie-glaces sur les porte-balais —*

*AMENDEMENT 1*



Reference number  
ISO 9259:1991/Amd.1:2001(E)

© ISO 2001

**PDF disclaimer**

This PDF file may contain embedded typefaces. In accordance with Adobe's licensing policy, this file may be printed or viewed but shall not be edited unless the typefaces which are embedded are licensed to and installed on the computer performing the editing. In downloading this file, parties accept therein the responsibility of not infringing Adobe's licensing policy. The ISO Central Secretariat accepts no liability in this area.

Adobe is a trademark of Adobe Systems Incorporated.

Details of the software products used to create this PDF file can be found in the General Info relative to the file; the PDF-creation parameters were optimized for printing. Every care has been taken to ensure that the file is suitable for use by ISO member bodies. In the unlikely event that a problem relating to it is found, please inform the Central Secretariat at the address given below.

STANDARDSISO.COM : Click to view the full PDF of ISO 9259:1991/Amd 1:2001

© ISO 2001

All rights reserved. Unless otherwise specified, no part of this publication may be reproduced or utilized in any form or by any means, electronic or mechanical, including photocopying and microfilm, without permission in writing from either ISO at the address below or ISO's member body in the country of the requester.

ISO copyright office  
Case postale 56 • CH-1211 Geneva 20  
Tel. + 41 22 749 01 11  
Fax + 41 22 749 09 47  
E-mail [copyright@iso.ch](mailto:copyright@iso.ch)  
Web [www.iso.ch](http://www.iso.ch)

Printed in Switzerland

## Foreword

ISO (the International Organization for Standardization) is a worldwide federation of national standards bodies (ISO member bodies). The work of preparing International Standards is normally carried out through ISO technical committees. Each member body interested in a subject for which a technical committee has been established has the right to be represented on that committee. International organizations, governmental and non-governmental, in liaison with ISO, also take part in the work. ISO collaborates closely with the International Electrotechnical Commission (IEC) on all matters of electrotechnical standardization.

International Standards are drafted in accordance with the rules given in the ISO/IEC Directives, Part 3.

Draft International Standards adopted by the technical committees are circulated to the member bodies for voting. Publication as an International Standard requires approval by at least 75 % of the member bodies casting a vote.

Attention is drawn to the possibility that some of the elements of this Amendment may be the subject of patent rights. ISO shall not be held responsible for identifying any or all such patent rights.

Amendment 1 to International Standard ISO 9259:1991 was prepared by Technical Committee ISO/TC 22, *Road vehicles*, Subcommittee SC 3, *Electrical and electronic equipment*.



# Passenger cars — Windscreen wiper systems — Wiper arm-to-blade connections

## AMENDMENT 1

Page 1, clause 2

Replace the first sentence in clause 2 with the following:

"Types A1, A2, A3, A4 and A5 are the hook type sizes for nominal arm sizes 8 mm × 3 mm, 9 mm × 3 mm, 9 mm × 3,5 mm, 9 mm × 4 mm and 12 mm × 4 mm."

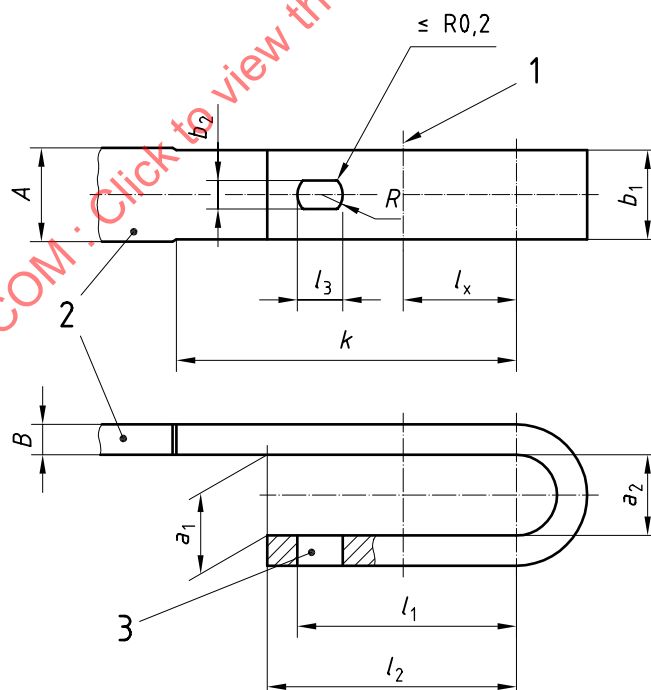
Amend the heading of 2.1.1 to read:

**"2.1.1 Hook dimensions — Types A1, A2, A3, A4 and A5".**

Page 2, Figure 1

Replace Figure 1 with the following figure:

Dimensions in millimetres



### Key

- 1 Wiper blade rotational axis
- 2 Wiper arm piece
- 3 Slot for locking lug

Figure 1

Replace Table 1 with the following table:

Table 1

Dimensions in millimetres

Connection type	Nominal arm size (A × B)	a <sub>1</sub>	a <sub>2</sub>	b <sub>1</sub>	b <sub>2</sub> <sup>a</sup>	l <sub>1</sub> <sup>a</sup>	l <sub>2</sub> <sup>a</sup>	l <sub>3</sub> <sup>a</sup>	l <sub>x</sub>	k	R <sup>a</sup>
		+0,8 0	H12	0 −0,15	min.	+0,4 0	+0,5 0	± 0,3	± 0,3	min.	min.
A1	8 × 3	6,7	6,7	7,8	2,8	14	18	6	0	29	2,8
A2	9 × 3			8,8							
A3	9 × 3,5										
A4	9 × 4	10,7	10,7		3,5	24	28		10	40	
A5	12 × 4			11,8	3,8	29	33		15	45	

<sup>a</sup> To be measured at the inner side of the hook.

Replace Figure 2 with the following figure:

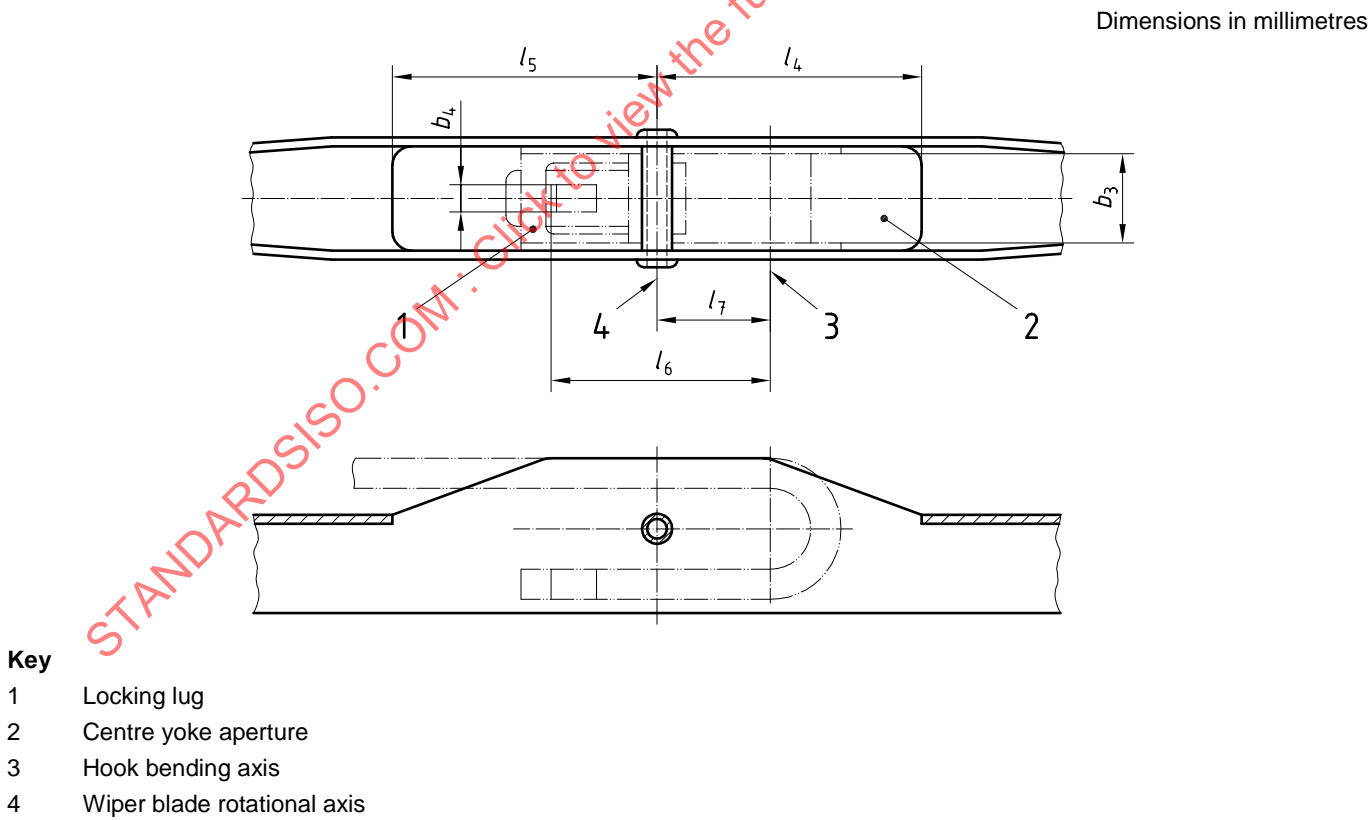


Figure 2