
**Telecommunications and information
exchange between systems — Near
Field Communication Interface and
Protocol 1 (NFCIP-1)**

*Télécommunications et échange d'information entre systèmes —
Interface et protocole 1 de communication en champ proche
(NFCIP-1)*

IECNORM.COM : Click to view the full PDF of ISO/IEC 18092:2023



IECNORM.COM : Click to view the full PDF of ISO/IEC 18092:2023



COPYRIGHT PROTECTED DOCUMENT

© ISO/IEC 2023

All rights reserved. Unless otherwise specified, or required in the context of its implementation, no part of this publication may be reproduced or utilized otherwise in any form or by any means, electronic or mechanical, including photocopying, or posting on the internet or an intranet, without prior written permission. Permission can be requested from either ISO at the address below or ISO's member body in the country of the requester.

ISO copyright office
CP 401 • Ch. de Blandonnet 8
CH-1214 Vernier, Geneva
Phone: +41 22 749 01 11
Email: copyright@iso.org
Website: www.iso.org

Published in Switzerland

Contents

	Page
Foreword.....	v
Introduction.....	vi
1 Scope.....	1
2 Normative references.....	1
3 Terms and definitions.....	1
4 Symbols and abbreviated terms.....	3
5 Conventions and notations.....	6
5.1 Representation of numbers.....	6
5.2 Names.....	6
6 Conformance.....	6
7 General.....	6
8 RF field.....	6
8.1 Values.....	6
8.2 Passive communication mode.....	7
8.3 Active communication mode.....	7
8.4 External RF field detection.....	7
9 RF signal interface.....	7
9.1 General.....	7
9.2 Bit duration.....	7
9.3 Active communication mode.....	8
9.3.1 General.....	8
9.3.2 Requirements for $f_c/128$	8
9.3.3 Requirements for $f_c/64$ and $f_c/32$	8
9.4 Passive communication mode.....	9
9.4.1 Requirements for $f_c/128$	9
9.4.2 Requirements for $f_c/64$ and $f_c/32$	10
10 General Protocol flow.....	10
11 Initialisation.....	11
11.1 General.....	11
11.2 RFCA.....	12
11.2.1 General.....	12
11.2.2 Initial RFCA.....	12
11.2.3 RFCA.....	13
11.3 Passive communication mode.....	14
11.3.1 Initialisation and SDD for $f_c/128$	14
11.3.2 Initialisation and SDD for $f_c/64$ and $f_c/32$	14
11.4 Active communication mode.....	17
11.4.1 Initialisation.....	17
11.4.2 Active communication mode RFCA.....	17
12 Transport protocol.....	18
12.1 General.....	18
12.2 Transport Data.....	18
12.3 Passive communication mode Activation flow.....	19
12.4 Active communication mode Activation flow.....	20
12.5 Commands.....	22
12.6 Activation of the protocol.....	23
12.6.1 Attribute Request and Response Commands.....	23
12.6.2 Wakeup Request and Response Commands.....	29
12.6.3 Parameter Selection Request and Response Commands.....	31

12.7	Data Exchange Protocol.....	33
12.7.1	Data Exchange Protocol Request and Response.....	33
12.7.2	Response timeout extension.....	38
12.7.3	Attention — Target present.....	38
12.7.4	Protocol operation.....	38
12.7.5	Multi-Activation.....	38
12.7.6	More information (Chaining).....	39
12.8	Deactivation of the protocol.....	39
12.8.1	General.....	39
12.8.2	Deselect Request and Response command.....	40
12.8.3	Release Request and Response commands.....	41
Annex A (normative) CRC calculation		43
Annex B (informative) SAK.....		45
Bibliography.....		46

IECNORM.COM : Click to view the full PDF of ISO/IEC 18092:2023

Foreword

ISO (the International Organization for Standardization) and IEC (the International Electrotechnical Commission) form the specialized system for worldwide standardization. National bodies that are members of ISO or IEC participate in the development of International Standards through technical committees established by the respective organization to deal with particular fields of technical activity. ISO and IEC technical committees collaborate in fields of mutual interest. Other international organizations, governmental and non-governmental, in liaison with ISO and IEC, also take part in the work.

The procedures used to develop this document and those intended for its further maintenance are described in the ISO/IEC Directives, Part 1. In particular, the different approval criteria needed for the different types of document should be noted. This document was drafted in accordance with the editorial rules of the ISO/IEC Directives, Part 2 (see www.iso.org/directives or www.iec.ch/members_experts/refdocs).

ISO and IEC draw attention to the possibility that the implementation of this document may involve the use of (a) patent(s). ISO and IEC take no position concerning the evidence, validity or applicability of any claimed patent rights in respect thereof. As of the date of publication of this document, ISO and IEC had not received notice of (a) patent(s) which may be required to implement this document. However, implementers are cautioned that this may not represent the latest information, which may be obtained from the patent database available at www.iso.org/patents and <https://patents.iec.ch>. ISO and IEC shall not be held responsible for identifying any or all such patent rights.

Any trade name used in this document is information given for the convenience of users and does not constitute an endorsement.

For an explanation of the voluntary nature of standards, the meaning of ISO specific terms and expressions related to conformity assessment, as well as information about ISO's adherence to the World Trade Organization (WTO) principles in the Technical Barriers to Trade (TBT) see www.iso.org/iso/foreword.html. In the IEC see www.iec.ch/understanding-standards.

This document was prepared by Joint Technical Committee ISO/IEC JTC 1, *Information technology*, Subcommittee SC 6, *Telecommunications and information exchange between systems*.

This third edition cancels and replaces the second edition (ISO/IEC 18092:2013), which has been technically revised. It also incorporates ISO/IEC 18092:2013/Cor 1:2015.

The main changes are as follows:

- adoption of near field communication (NFC) security standard for the Target;
- harmonization with the NFC Forum Digital Protocol Technical Specification^[2] and Activity Technical Specification^[3].

Any feedback or questions on this document should be directed to the user's national standards body. A complete listing of these bodies can be found at www.iso.org/members.html and www.iec.ch/national-committees.

Introduction

This document specifies the interface and protocol for simple wireless communication between close coupled devices. These Near Field Communication (NFC) devices communicate with bit rates of 106, 212 and 424 kbit/s ($f_c/128$, $f_c/64$ and $f_c/32$).

This allows, but does not specify, applications in network products and consumer equipment.

The first edition of ISO/IEC 18092 was prepared by Ecma International (as ECMA-340) and was adopted, under a special “fast-track procedure”, by Joint Technical Committee ISO/IEC JTC 1/SC 6 in parallel with its approval by national bodies of ISO and IEC. The second edition of ISO/IEC 18092 was maintained by ISO/IEC JTC 1/SC 6 and Ecma International. This third edition of ISO/IEC 18092 is maintained by ISO/IEC JTC 1/SC 6 with the goal to be harmonized with the NFC Forum Digital Protocol Technical Specification^[2] and Activity Technical Specification^[3] maintaining backward compatibility, to enable the NFC security feature and to incorporate clarifications on timings of radio frequency (RF) field switched off.

IECNORM.COM : Click to view the full PDF of ISO/IEC 18092:2023

Telecommunications and information exchange between systems — Near Field Communication Interface and Protocol 1 (NFCIP-1)

1 Scope

This document defines:

- communication modes for Near Field Communication Interface and Protocol 1 (NFCIP-1) using inductive coupled devices operating at the centre frequency of 13,56 MHz for interconnection of computer peripherals;
- both the active and the passive communication modes of NFCIP-1 to realize a communication network using Near Field Communication (NFC) devices for networked products and for consumer equipment;
- a transport protocol including protocol activation and data exchange methods.

This document specifies:

- modulation schemes;
- codings;
- bit rates;
- frame format of the radio frequency (RF) interface;
- initialisation schemes and conditions required for data collision control during initialisation.

Information interchange between systems is based on agreement between the interchange parties upon the interchange codes and the data structure.

2 Normative references

The following documents are referred to in the text in such a way that some or all of their content constitutes requirements of this document. For dated references, only the edition cited applies. For undated references, the latest edition of the referenced document (including any amendments) applies.

ISO/IEC 13157-1, *Information technology — Telecommunications and information exchange between systems — NFC Security — Part 1: NFC-SEC NFCIP-1 security services and protocol*

ISO/IEC 14443-2:2020, *Cards and security devices for personal identification — Contactless proximity objects — Part 2: Radio frequency power and signal interface*

ISO/IEC 14443-3:2018, *Cards and security devices for personal identification — Contactless proximity objects — Part 3: Initialization and anticollision*

ITU-T V.41:1988, *Code-independent error-control system*

3 Terms and definitions

For the purposes of this document, the terms and definitions given in ISO/IEC 14443-2 and ISO/IEC 14443-3, and the following apply.

ISO and IEC maintain terminology databases for use in standardization at the following addresses:

- ISO Online browsing platform: available at <https://www.iso.org/obp>
- IEC Electropedia: available at <https://www.electropedia.org/>

3.1

active communication mode

mode in which both the *Initiator* (3.5) and the *Target* (3.16) use their own radio frequency (RF) field to enable the communication

3.2

collision

transmission by two or more *Targets* (3.16) or *Initiators* (3.5) during the same *time period* (3.17), such that the Initiator or the Target is unable to distinguish from which Target the data originated

3.3

frame

sequence of data bits and optional error detection bits, with frame delimiters at start and end

3.4

$H_{\text{Threshold}}$

threshold value to detect an external radio frequency (RF) field

3.5

Initiator

entity that generates the radio frequency (RF) field and starts the Near Field Communication Interface and Protocol (NFCIP-1) communication

3.6

load modulation

process of amplitude modulating a radio frequency (RF) field by varying the properties of a resonant circuit placed within the RF field

3.7

lsb first

least significant bit first

least significant bit first, indicating a serial data transmission system that sends lsb before all other bits

3.8

Manchester bit encoding

method of bit coding whereby a logic level during a bit duration is represented by a sequence of two defined physical states of a communication medium

3.9

modulation index

signal amplitude ratio of the modulation to the level of the unmodulated carrier, calculated by:

$$[1 - b] / [1 + b]$$

where b is the ratio between the modulated amplitude and the initial signal amplitude

3.10

msb first

most significant bit first

serial data transmission system that sends the msb before all other bits

3.11

NFCIP-1 device

entity supporting the *active communication mode* (3.1) and the *passive communication mode* (3.13)

3.12**NFC identifier****NFCID n ($n = 1, 2$ or 3)**

number used by the *Single Device Detection* (3.15) sequence for both the *Active communication mode* (3.1) and the *Passive communication mode* (3.13)

3.13**passive communication mode**

mode when the *Initiator* (3.5) is generating the radio frequency (RF) field and the *Target* (3.16) responds to an Initiator command in a load modulation scheme

3.14**RF Collision Avoidance****RFCA**

method to detect the presence of a radio frequency (RF) field based on the carrier frequency

3.15**Single Device Detection****SDD**

algorithm used by the *Initiator* (3.5) to detect one out of several *Targets* (3.16) in its radio frequency (RF) field

3.16**Target**

entity that responds to *Initiator* (3.5) command either using load modulation scheme (radio frequency (RF) field generated by Initiator) or using modulation of self-generated RF field

3.17**time period**

number of slots used for *RF Collision Avoidance* (3.14)

3.18**time slot**

method of preparing a time window when a *Target* (3.16) answers, and assigning and identifying two or more logic channels

4 Symbols and abbreviated terms

The abbreviated terms in ISO/IEC 14443-2 and ISO/IEC 14443-3, and the following apply.

ATR	Attribute
ATR_REQ	Attribute Request
ATR_RES	Attribute Response
BRI	receiving bit duration supported by Initiator
BRt	receiving bit duration supported by Target
BSi	sending bit duration supported by Initiator
BSt	sending bit duration supported by Target
CMD	command
CRC	cyclic redundancy check
D	divisor

DEP	Data Exchange Protocol
DEP_REQ	Data Exchange Protocol Request
DEP_RES	Data Exchange Protocol Response
DIDi	Initiator Device ID
DIDt	Target Device ID
DRi	Data rate Received by Initiator
DRt	Data rate Received by Target
DSi	Data rate Sent by Initiator
DSL	Deselect
DSL_REQ	Deselect Request
DSL_RES	Deselect Response
DSt	Data rate Send by Target
etu	elementary time unit
f_c	frequency of operating field (carrier frequency)
$G(x)$	generator polynomial for CRC generation
Gi	optional information field for Initiator
Gt	optional information field for Target
HLTA	HaLT command, Type A
H_{\max}	maximum field strength of the Initiator antenna field
H_{\min}	minimum field strength of the Initiator antenna field
$H_{\text{Threshold}}$	threshold value to detect an external radio frequency (RF) field
ID	identification number
LEN_{MAX}	maximum frame size
LRi	length reduction of Initiator
LRt	length reduction of Target
lsb	least significant bit
lsb first	least significant bit first
MI	Multiple Information link for Data Exchange Protocol
msb	most significant bit
NAD	Node Address
NFCID1	UID for SDD in Passive communication mode at $f_c/128$

NFCID2	ID for SDD in Passive communication mode at $f_c/64$ and $f_c/32$
NFCID3	random ID for transport protocol activation
NFC-SEC	NFCIP-1 Security Services and Protocol (specified in ISO/IEC 13157-1)
PA	preamble
PCD	Proximity Coupling Device
pdu	protocol data unit
PFB	control information for transaction
PICC	proximity card or object
PNI	Packet Number Information
PPi	Protocol Parameters used by Initiator
PPt	Protocol Parameters used by Target
PSL	Parameter Selection
PSL_REQ	Parameter Selection Request
PSL_RES	Parameter Selection Response
RF	Radio Frequency
RFCA	RF Collision Avoidance
RFU	Reserved for Future Use
RLS	Release
RLS_REQ	Release Request
RLS_RES	Release Response
t_{RW}	Response Waiting Time
SAK	Select Acknowledge
SB	Start Byte for data exchange protocol at $f_c/128$
SDD	Single Device Detection (anticollision)
SYNC	synchronisation pattern
TO	Time Out
UID	Unique Identifier
WT	Waiting Time
WUP	Wakeup
WUPA	Wake UP command, Type A
WUP_REQ	Wakeup Request

WUP_RES Wakeup Response

5 Conventions and notations

5.1 Representation of numbers

The following conventions and notations apply in this document unless otherwise stated:

- Letters and digits in single quotation marks represent numbers in hexadecimal notation.
- The setting of bits is denoted by ZERO or ONE.
- Numbers in binary notation and bit patterns are represented by strings of digits 0 and 1 shown with the most significant bit to the left. Within such strings, X may be used to indicate that the setting of a bit is not specified within the string, e.g. (XXXX)b.

5.2 Names

The names of basic elements, e.g. specific fields, are written with a capital initial letter.

6 Conformance

A system implementing the active and the passive communication mode shall be in conformance with this document if it meets all the mandatory requirements specified herein.

7 General

NFCIP-1 Targets and Initiators shall implement both the active and the passive communication modes.

In the active communication mode, both the Initiator and the Target use their own RF field to communicate. The Initiator starts the NFCIP-1 transaction, which consists of initialisation, protocol activation, data exchange and optional device deactivation. The Target responds to an Initiator command in the active communication mode by modulating its own RF field.

In the passive communication mode, the Initiator generates the RF field and starts the transaction. The Target responds to an Initiator command in the passive communication mode by modulating the Initiators' RF field, which is referred to as load modulation.

This document specifies requirements for modulation, bit rates and bit coding. In addition, it specifies requirements for the start of communication, the end of communication, the bit and byte representation, the framing and error detection, the single device detection (SDD), the protocol activation and parameter selection and the data exchange and deactivation of NFCIP-1 devices.

Initiators and Targets exchange commands, responses and data in alternating or half duplex communication.

NFCIP-1 devices are capable to start transactions at bit rates of $f_c/128$, $f_c/64$ and $f_c/32$. Initiators select one of those bit rates to start a transaction and they may change the bit rate using the parameter selection during a transaction.

The mode (active or passive) shall not be changed during a transaction.

8 RF field

8.1 Values

f_c is 13,56 MHz.

H_{\min} is 1,5 A/m (rms).

H_{\max} is 7,5 A/m (rms).

$H_{\text{Threshold}}$ is 0,187 5 A/m (rms).

8.2 Passive communication mode

The Initiator shall generate field strength of at least H_{\min} and not exceeding H_{\min} at manufacturer specified positions (i.e. operating volume) under un-modulated conditions.

The Target shall operate continuously between H_{\min} and H_{\max} .

8.3 Active communication mode

An Initiator and a Target shall alternately generate an RF field of at least H_{\min} and not exceeding H_{\max} at manufacturer specified positions (i.e. operating volume) under un-modulated conditions.

8.4 External RF field detection

NFCIP-1 devices shall detect external RF fields at f_c with field strength higher than $H_{\text{Threshold}}$.

9 RF signal interface

9.1 General

This clause specifies bit duration and RF signal interface requirements for active and passive communication modes.

NOTE Active and passive communication modes have also been adopted by NFC Forum, as shown in Reference [2] and [3].

9.2 Bit duration

One etu equals $128/(D \times f_c)$, where the values of the divisor D depend on the bit rate and communication mode, see Table 1.

Table 1 — Divisor D

Communication mode	bit rate	Divisor D
Active or Passive	$f_c/128$ (~106 kbit/s)	1
Active or Passive	$f_c/64$ (~212 kbit/s)	2
Active or Passive	$f_c/32$ (~424 kbit/s)	4
Active	$f_c/16$ (~848 kbit/s)	8
Active	$f_c/8$ (~1 695 kbit/s)	16
Active	$f_c/4$ (~3 390 kbit/s)	32
Active	$f_c/2$ (~6 780 kbit/s)	64

NOTE 1 The Initiator selects the communication mode (either Active or Passive) and bit rate ($f_c/128$, $f_c/64$ or $f_c/32$ specified by the following clauses).

NOTE 2 This document does not specify the modulation and the bit coding beyond the bit rate of $f_c/32$.

9.3 Active communication mode

9.3.1 General

Targets and Initiators shall conform with the following specifications for both communication directions, i.e. Initiator to Target and Target to Initiator.

9.3.2 Requirements for $f_c/128$

9.3.2.1 Bit rate

The bit rate for the transmission during initialisation and SDD shall be $f_c/128$.

9.3.2.2 Modulation

The modulation shall be in accordance with ISO/IEC 14443-2:2020, 8.1.2 for a bit rate of $f_c/128$. During transmission, both the Initiator and the Target shall conform to PCD values. During reception, both the Initiator and the Target shall conform to PICC values.

9.3.2.3 Bit representation and coding

The bit representation and coding shall be in accordance with ISO/IEC 14443-2:2020, 8.1.3 for a bit rate of $f_c/128$.

9.3.2.4 Byte transmission

Initiators and targets shall transmit bytes with the lsb first.

9.3.3 Requirements for $f_c/64$ and $f_c/32$

9.3.3.1 Bit rates

The bit rates for the transmission during initialisation and SDD shall respectively be $f_c/64$ or $f_c/32$.

9.3.3.2 Modulation

The modulation shall be in accordance with ISO/IEC 14443-2:2020, 9.1.2 for the bit rate of $f_c/64$ and $f_c/32$. During transmission, both the Initiator and the Target shall apply the PCD values. During reception, both the Initiator and the Target shall apply the PICC values.

The Target should accept a modulation index range from 8 % to 30 % to operate with Initiators using a modulation index higher than 14 % for backward compatibility.

9.3.3.3 Bit representation and coding

Manchester bit encoding shall be employed as illustrated in [Figure 1](#) and [Figure 2](#).

Bit coding format is Manchester with logic levels defined as:

- Logic “ZERO”: The first half of the bit duration is carrier low field amplitude, and the second half of the bit duration shall be carrier high field amplitude (no modulation applied).
- Logic “ONE”: The first half of the bit duration is carrier high field amplitude (no modulation applied), and the second half of the bit duration shall be carrier low field amplitude.

Reverse polarity in amplitude shall be permitted. Polarity shall be detected from the SYNC.

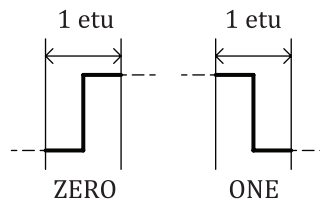


Figure 1 — Manchester bit encoding (obverse amplitude)

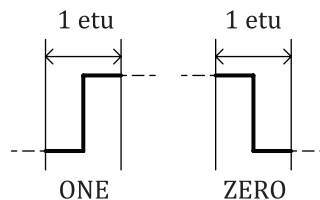


Figure 2 — Manchester bit encoding (reverse amplitude)

9.3.3.4 Byte transmission

Initiators and Targets shall transmit bytes with the msb first.

9.4 Passive communication mode

9.4.1 Requirements for $f_c/128$

9.4.1.1 Initiator to Target requirements

See [9.3.2](#).

9.4.1.2 Target to Initiator requirements

9.4.1.2.1 Bit rate

See [9.3.2.1](#).

9.4.1.2.2 Modulation

The modulation shall be in accordance with ISO/IEC 14443-2:2020, 8.2.2.

9.4.1.2.3 Subcarrier Frequency

The subcarrier frequency shall be in accordance with ISO/IEC 14443-2:2020, 8.2.3 for a bit rate of $f_c/128$.

9.4.1.2.4 Subcarrier modulation

The subcarrier modulation shall be in accordance with ISO/IEC 14443-2:2020, 8.2.4 for a bit rate of $f_c/128$.

9.4.1.2.5 Bit representation and coding

The bit representation and coding shall be in accordance with ISO/IEC 14443-2:2020, 8.2.6 for a bit rate of $f_c/128$.

9.4.1.2.6 Byte transmission

Initiators and Targets shall transmit bytes with the lsb first.

9.4.2 Requirements for $f_c/64$ and $f_c/32$

9.4.2.1 Initiator to Target requirements

9.4.2.1.1 Bit rate

See [9.3.3.1](#).

9.4.2.1.2 Modulation

The modulation shall be in accordance with ISO/IEC 14443-2:2020, 9.1.2 for the bit rate of $f_c/64$ and $f_c/32$. During transmission, the Initiator shall apply the PCD values.

9.4.2.1.3 Bit representation and coding

See [9.3.3.3](#).

9.4.2.1.4 Byte transmission

See [9.3.3.4](#).

9.4.2.2 Target to Initiator requirements

9.4.2.2.1 Bit rate

See [9.3.3.1](#).

9.4.2.2.2 Modulation

The Target shall be capable of communication to the Initiator via an inductive coupling area by using load modulation applied at f_c of the Initiator's RF field with the PICC load modulation amplitude value specified in ISO/IEC 14443-2:2020, 8.2.2. The Initiator shall be able to receive a signal with load modulation amplitude as specified for the PCD reception in ISO/IEC 14443-2:2020, 8.2.5.

9.4.2.2.3 Bit representation and coding

See [9.3.3.3](#).

9.4.2.2.4 Byte transmission

See [9.3.3.4](#).

10 General Protocol flow

The General Protocol flow between NFCIP-1 devices shall be conducted through the following consecutive operations:

- Any NFCIP-1 device shall be in Target mode initially and not generate an RF field and shall wait for a command from an Initiator.
- The NFCIP-1 device may switch to Initiator mode and select either active or passive communication mode and bit rate.

- Initiators shall test for external RF field presence and shall not activate their RF field if an external RF field is detected. See [8.4](#).
- If an external RF field is not detected, the Initiator shall activate its own RF field for the activation of Target.
- Exchange commands and responses in the same communication mode and the bit rate.

[Figure 3](#) shows the general initialisation and SDD flow for the active and the passive communication mode at different bit rates.

The General Protocol flow describes the flow to initialise and select the Targets either in the Passive communication mode or in the active communication mode using one of the bit rates. RFCA is described in [11.2](#). The passive communication mode is described in [11.3](#). The initialisation and SDD for the bit rate of $f_c/128$ is described in [11.3.1](#), initialisation and SDD for bit rates of $f_c/64$ and $f_c/32$ is described in [11.3.2](#). The active communication mode is described in [11.3](#).

The Activation of the Protocol is described in [12.5](#). The Parameter Selection is described in [12.6.3](#). The Data Exchange Protocol is described in [12.6](#). The Deactivation is described in [12.7](#).

11 Initialisation

11.1 General

This clause describes the initialisation and collision detection protocol for Targets in the active and the passive communication mode. The Initiator shall detect a collision that occurs when at least two Targets simultaneously transmit bit patterns with one or more bit positions where they transmit complementary values.

[Figure 3](#) shows the general initialisation and SDD flow for the active and the passive communication mode at different bit rates.

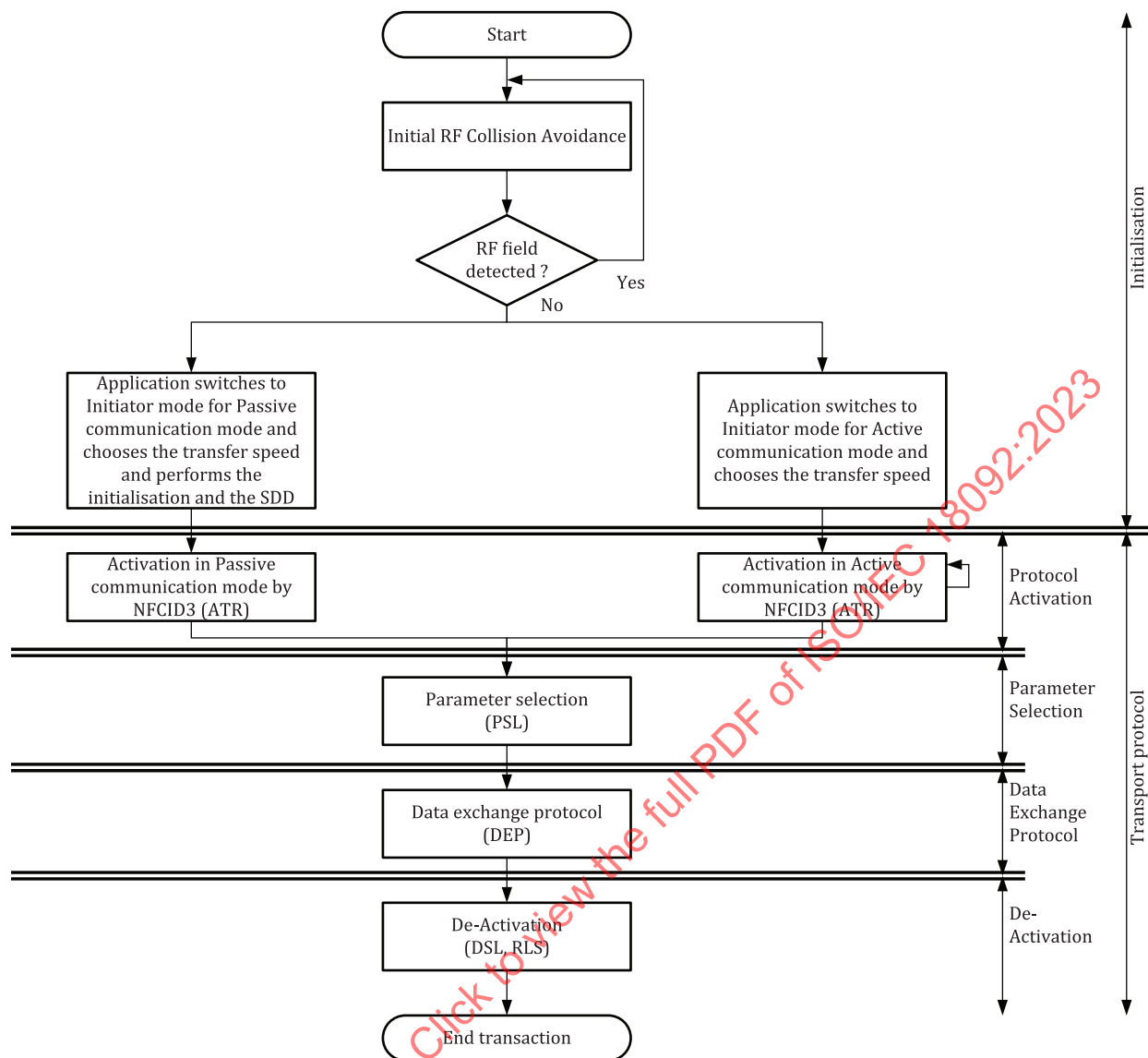


Figure 3 — General initialisation and SDD flow

11.2 RFCA

11.2.1 General

In order not to disturb any other NFC communication and any current infrastructure running on the carrier frequency, an Initiator for NFC communication shall not generate its own RF field as long as another RF field is detected.

11.2.2 Initial RFCA

To start communication with the Target device either in the active or the passive communication mode an Initiator shall sense continuously for the presence of an external RF field. See 8.4.

If the Initiator detects no RF field within the timeframe $t_{\text{IDT}} + n \times t_{\text{RFW}}$ then the Initiator shall switch its RF field on, otherwise it shall restart Initial RFCA. The integer value of n shall be randomly generated. Figure 4 specifies the timing of the initial RFCA during initialisation.

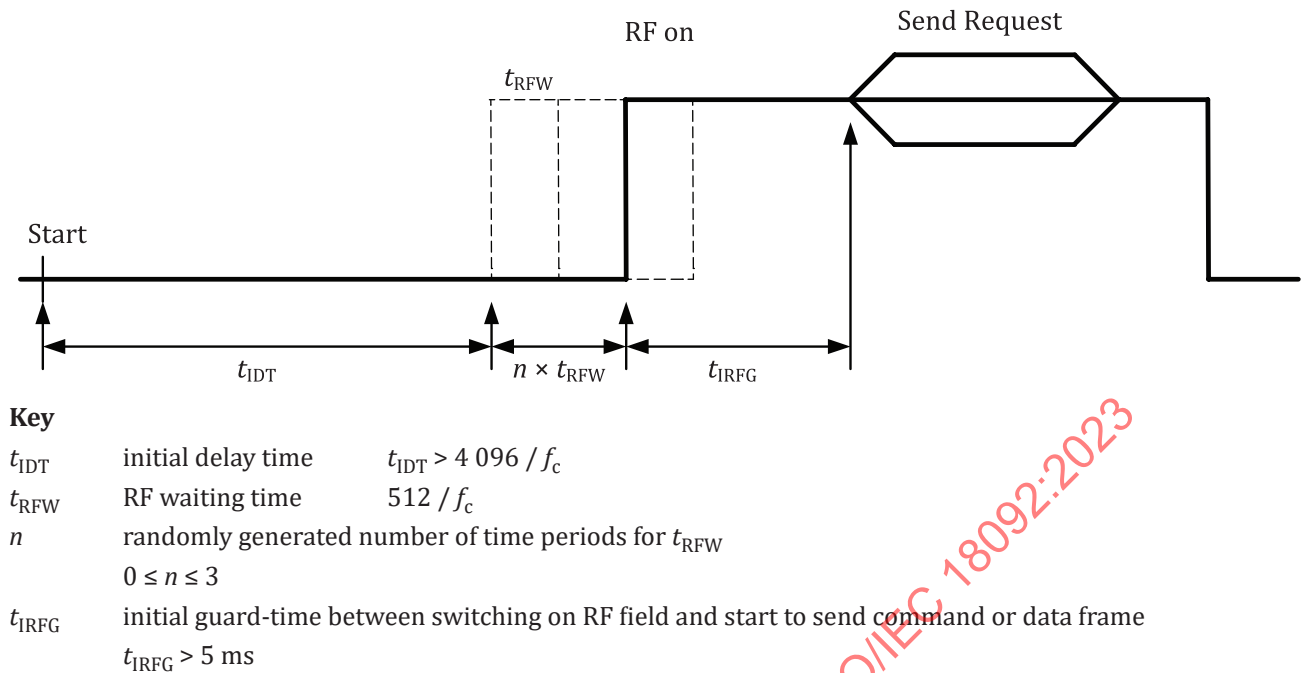


Figure 4 — Initial RFCA

The RF field, which is generated by the Initiator, shall be switched off in the active communication mode. The RF field, which is generated by the Initiator, shall not be switched off in the passive communication mode.

11.2.3 RFCA

To avoid collision by simultaneous responding of more than one Target in the active communication mode during activation, Targets shall perform response RFCA as specified in [Figure 5](#).

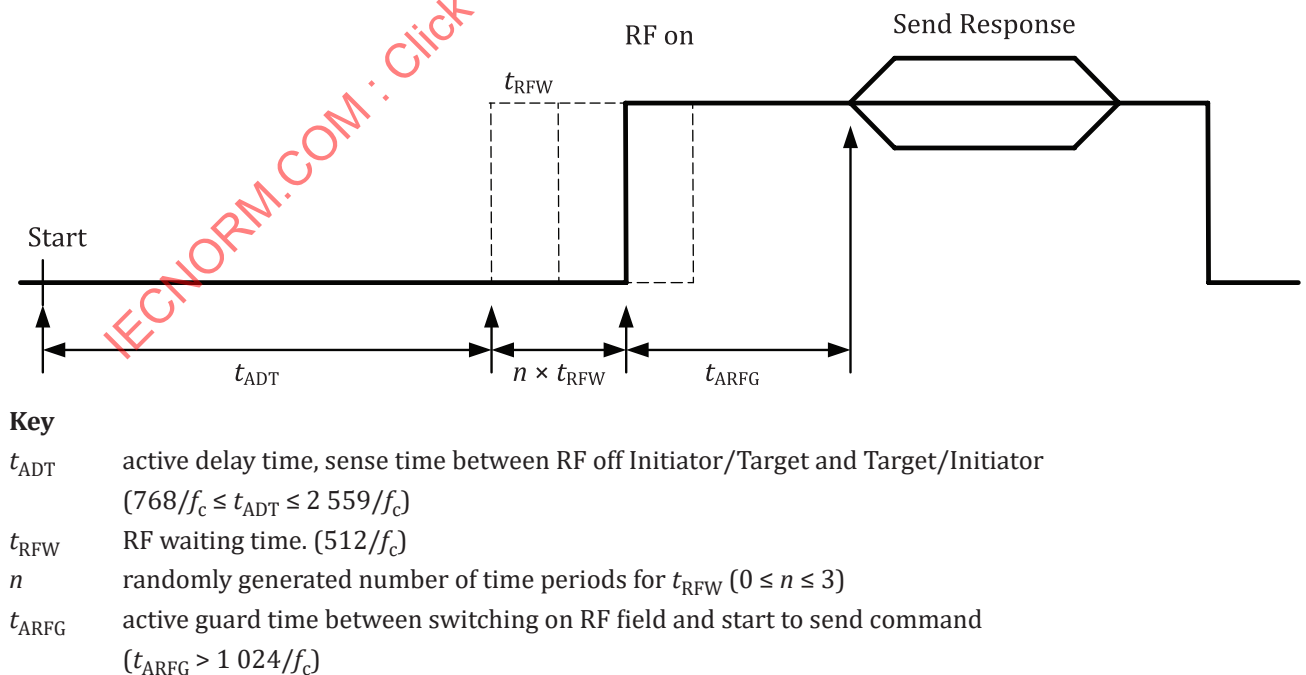


Figure 5 — Response RFCA sequence during activation

11.3 Passive communication mode

11.3.1 Initialisation and SDD for $f_c/128$

Initialisation and SDD for $f_c/128$ shall conform to ISO/IEC 14443-3:2018, Clause 6 with the coding of SAK as specified in [Table 2](#).

Table 2 — Coding of SAK

bit 8	bit 7	bit 6	bit 5	bit 4	bit 3	bit 2	bit 1	Meaning
x	x	x	x	x	1	x	x	UID not complete, see ISO/IEC 14443-3:2018, Table 9.
x	x	1	x	x	0	x	x	UID complete, see ISO/IEC 14443-3:2018, Table 9.
x	x	0	x	x	0	x	x	UID complete, see ISO/IEC 14443-3:2018, Table 9.
x	1	x	x	x	0	x	x	UID complete, Target compliant with the transport protocol specified in Clause 12 . Attribute Request is supported.
x	0	x	x	x	0	x	x	UID complete, Target not compliant with the transport protocol specified in Clause 12 . Attribute Request is not supported.

The uid0 shall be set to '08'.

If bit 3 is (1)b the Initiator shall ignore any other bit of SAK. If bit 3 is (0)b the Initiator shall interpret bit 7 and ignore the other bits.

When bit 3 is set to (1)b then the Target should set all other bits of SAK to (0)b.

See [Annex B](#) for combination of SAK use in the ISO/IEC 14443 series and this document.

NOTE If bit 6 is (1)b in SAK then device supports protocol as defined in ISO/IEC 14443-4.

11.3.2 Initialisation and SDD for $f_c/64$ and $f_c/32$

11.3.2.1 Start and end of communication

The start of the Passive communication shall be signalled by the presence of the carrier frequency. The communication shall start with the preamble sequence of at least 48 bits of Manchester encoded ZERO. The end of communication shall be forecasted from the Length field of the frame.

After one NFCIP-1 device has finished communication, the other shall delay for a period of at least $8 \times 64/f_c$ before starting transmission by sending the preamble sequence as shown in [Figure 6](#).

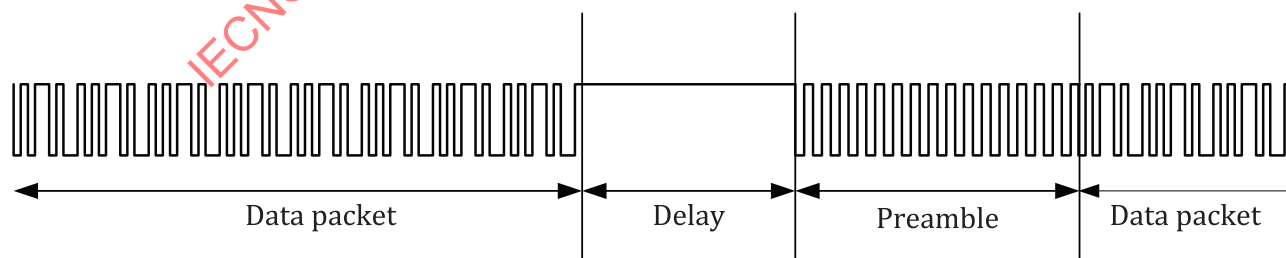


Figure 6 — Delay between consecutive frames

11.3.2.2 Frame format

The frame format shall consist of Preamble, SYNC, Length, Payload, and CRC, see [Figure 7](#).

The Preamble shall be 48 bits minimum all logical ZEROs.

The SYNC shall be 2 bytes. The 1st byte of the SYNC shall be 'B2' and the 2nd byte shall be '4D'.

Preamble	SYNC	Length	Payload	CRC
----------	------	--------	---------	-----

Figure 7 — Frame format

The Length shall be an 8-bit field and it shall be set to the number of bytes to be transmitted in Payload plus 1. The range of the Length shall be 1 to 255, and other settings are RFU.

NOTE 1 The minimum value for the Length was 2 in the last edition of this document.

NOTE 2 The range of the Length is harmonized with the NFC Forum Digital Protocol Technical Specification^[2].

The Payload shall consist of n 8-bit-bytes of data where n is indicated by the number of data bytes.

The CRC shall be calculated according to [A.3](#).

11.3.2.3 SDD for $f_c/64$ and $f_c/32$

The basic technique of the SDD procedure shall be the time slot method. The number of the slot shall be the integer value beyond zero. The Initiator shall send Polling Requests. The Target shall respond in a time slot randomly chosen from the range specified by the Initiator. The Initiator shall be able to read NFCID2 data (see [11.3.2.4](#)) of Target(s) in different time slots.

After obtaining NFCID2 data from Target(s) in the operating field, the Initiator may communicate with multiple Targets.

Up to 16 time slots may be supported by agreement between the interchange parties. The number of time slot may be indicated by the value TSN in the Polling Request Frame from the Initiator.

A Target, which is already powered up, responds to the Initiator according to the following rules after receiving the Polling Request Frame from the Initiator.

- The Target shall generate a random number R in the range 0 to TSN.
- The Target shall wait until the time slot is matched to R , then send the Polling Response Frame and wait for the next Request. The Target may ignore a Polling Request to reduce instances of collision of Responses.

The communication between the Initiator and the Target shall be initiated as follows:

- The Target gets power from the operating field generated by the Initiator.
- The Target shall become ready for receiving a Polling Request from the Initiator in maximum 2 sec from power up.
- The Target shall wait for a Polling Request sent from the Initiator. The Initiator may send a Polling Request without waiting for the Target to become ready.
- If the Initiator fails to receive Polling Response, then the Initiator may send Polling Request again. The Initiator of the Passive communication mode shall keep RF power on while executing the SDD procedure.

The delay t_d between the end of the Request Frame and the first time slot shall be $512 \times 64/f_c$.

The time slot unit t_s shall be $256 \times 64/f_c$.

[Figure 8](#) illustrates an example situation of the SDD by time slot. In this example, 5 Targets are responding. The Initiator may be able to get the Response information of the Target 2, 4, and 5 excluding 1 and 3. Because a collision has occurred at the time slot 1.

The Initiator may repeat the SDD procedure.

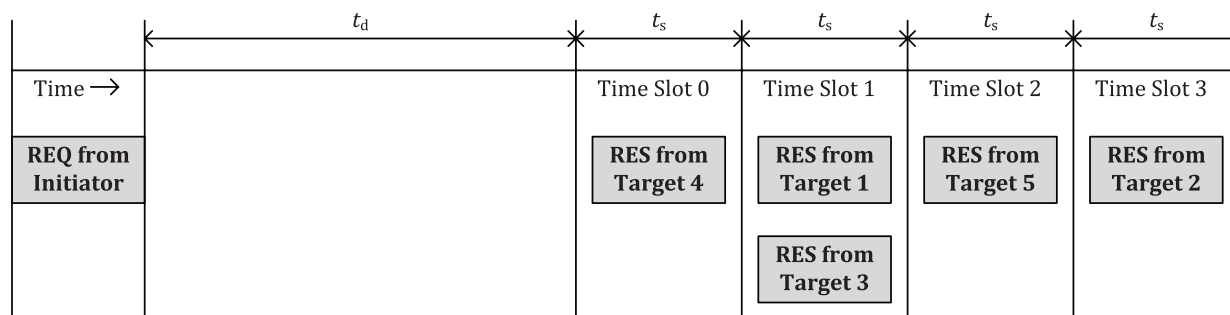


Figure 8 — SDD by time slot

11.3.2.4 NFCID2 contents

NFCID2 shall be an 8-byte number for identifying NFCIP-1 devices. The 2-byte prefix code shall be followed by a 6-byte number in the NFCID2. The prefix code shall define the characteristics for the 6-byte number.

The prefix code and 6-byte number shall be used as specified in [Table 3](#).

Table 3 — NFCID2 contents

Prefix code	6-byte number	Meaning
'01' 'FE'	Random number, dynamically generated by the Target	Indicates Target is compliant with the transport protocol specified in Clause 12 and Attribute Request is supported.
'02' 'FE'	Fixed number, non-unique	Indicates Target is not compliant with the transport protocol specified in Clause 12 and Attribute Request is not supported.
Other values	n/a	RFU

NOTE The prefix code of '02' 'FE' is harmonized with the NFC Forum Digital Protocol Technical Specification^[2].

11.3.2.5 Polling Request Frame format

To find Targets, an Initiator shall send a Polling Request frame, see [Figure 9](#).

Preamble (48 bit min.)	SYNC (16 bit)	Length (8 bit)	Payload					CRC (16 bit)
			'00'	'FF'	'FF'	'00'	TSN	

Figure 9 — Polling Request Frame format

The Preamble, SYNC, Length and CRC shall be in accordance with [11.3.2.2](#).

The Length shall be set to '06', which is calculated as specified in [11.3.2.2](#).

The 1st byte of the Payload shall be set to '00'.

The 2nd byte and the 3rd of Payload shall be set to 'FF' and other settings are RFU.

The 4th byte of Payload shall be set to '00', and other settings are RFU.

The TSN shall be '00', '01', '03', '07', or '0F'. Any other settings are RFU.

Figure 8 illustrates an example where the TSN is '03'. If the TSN is set to '00' then only the time slot 0 shall be used.

11.3.2.6 Polling Response Frame format

Target shall send the following frame as the Polling Response toward the Polling Request, see Figure 10.

Preamble (48 bit min.)	SYNC (16 bit)	Length (8 bit)	Payload			CRC (16 bit)
			'01'	NFCID2	Pad	

Figure 10 — Polling Response Frame format

The Preamble, SYNC, Length and CRC shall be in accordance with 11.3.2.2.

The Length field shall be set '12', which is calculated as specified in 11.3.2.2.

The start byte of the Payload shall be set to '01'. The Payload shall contain 8-byte of NFCID2 and 8-byte of Pad. The Pad shall be ignored for data interchange.

11.4 Active communication mode

11.4.1 Initialisation

The application switches to Initiator for the active communication mode and may select a bit rate; $f_c/128$, $f_c/64$ or $f_c/32$.

11.4.2 Active communication mode RFCA

The RFCA shall be executed according to the timing chart in Figure 11.

- The Initiator shall perform the initial RFCA.
- The first command sent by the Initiator shall be an ATR_REQ in the active communication mode at a selected bit rate.
- The Initiator shall switch off the RF field and respect t_{RF_OFF} after any command is sent in active communication mode.
- The Target performs the response RFCA.
- The Target sends the ATR_RES as a response to the ATR_REQ in the same bit rate as it has received the ATR_REQ and switch of the RF field respecting t_{RF_OFF} after any command is sent in active communication mode.
- The Initiator performs the response RFCA with $n = 0$.
- The Initiator sends the PSL_REQ in order to change parameter or sends the DEP_REQ to start the data exchange protocol.

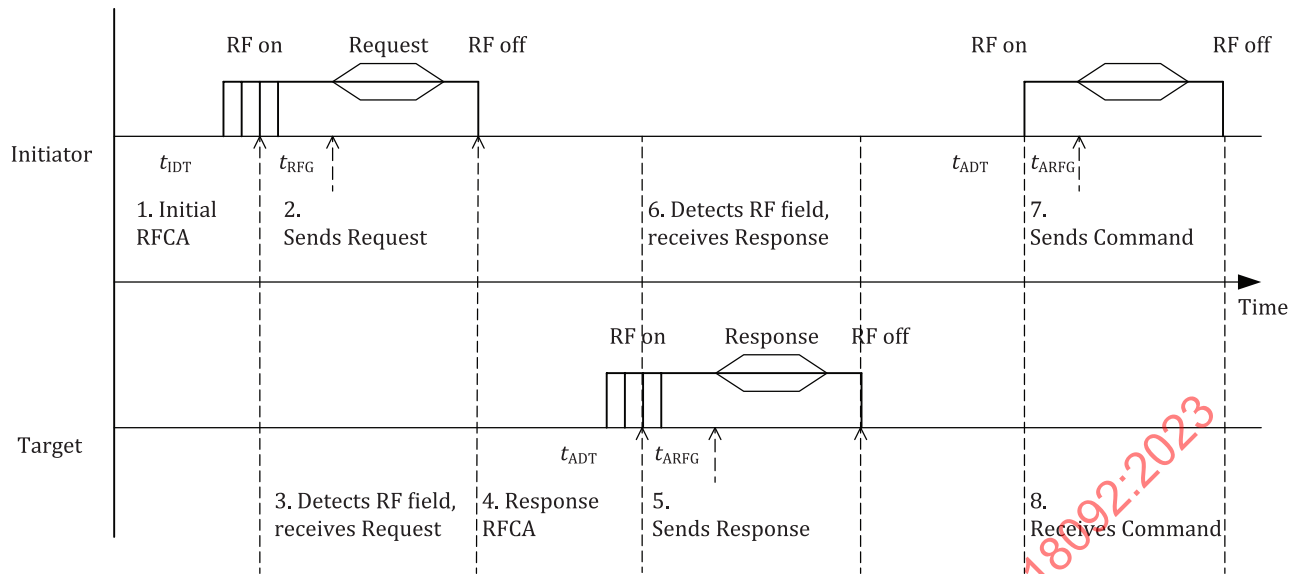


Figure 11 — Initialisation flow for active communication mode

t_{RF_OFF} is the time between the start of the rising edge of the last modulation and the start of falling edge when the device turns off the RF field and should be in the range of

- $350/f_c < t_{RF_OFF} \leq 2\,559/f_c$ for a bit rate of $f_c/128$, and
- $215/f_c < t_{RF_OFF} \leq 2\,559/f_c$ for a bit rate of $f_c/64$ or $f_c/32$.

In case where two Targets or more are in the field, the one with the lowest n will answer first and the other will not answer.

In case of two or more Targets answering in exactly the same time period, the Initiator will detect a collision and it will re-send the ATR_REQ, which is described in [12.6.1.1](#).

After the first valid Target response is detected by the Initiator, the Initiator shall use $n = 0$ for further communication.

After the Target has received a request other than ATR_REQ, the Target shall use $n = 0$ for further communication.

12 Transport protocol

12.1 General

The transport protocol is handled in three parts:

- activation of the protocol, which includes the Request for Attributes and the Parameter Selection;
- the data exchange protocol;
- the deactivation of the protocol including the Deselect and the Release.

12.2 Transport Data

User data shall be transported in the Transport Data field in the Frame format. [Figure 12](#) specifies the position of the Transport Data field in each Frame format.

The structure for the Frame format for $f_c/128$ shall conform to ISO/IEC 14443-3:2018, 6.2.3.2. The start byte SB shall be set to 'F0'. The LEN byte shall be set to the length of the Transport Data field plus 1. The

range of the LEN shall be in the range of 3 to 255. The E1 is the CRC for the Frame format of $f_c/128$ as described in [A.1](#). Other settings of LEN shall not be used.

[Subclause 11.3.2.2](#) specifies the frame format for $f_c/64$ and $f_c/32$ including the Preamble PA and the Synchronous pattern bytes SYNC.

The LEN byte shall be set to the length of the Transport Data field plus 1. The value of LEN shall be in the range of 3 to 255. The E2 is the CRC for the Frame format of $f_c/64$ and $f_c/32$ as described in [A.3](#). Other settings of LEN shall not be used.

The Transport data field contains the mandatory command bytes CMD1 and CMD2 as described in [12.4](#) and the data bytes Byte 1 to Byte n . The content of Byte 1 to Byte n depends on the command byte CMD2 and may contain information. In that case they are mandatory. Data bytes are optional.

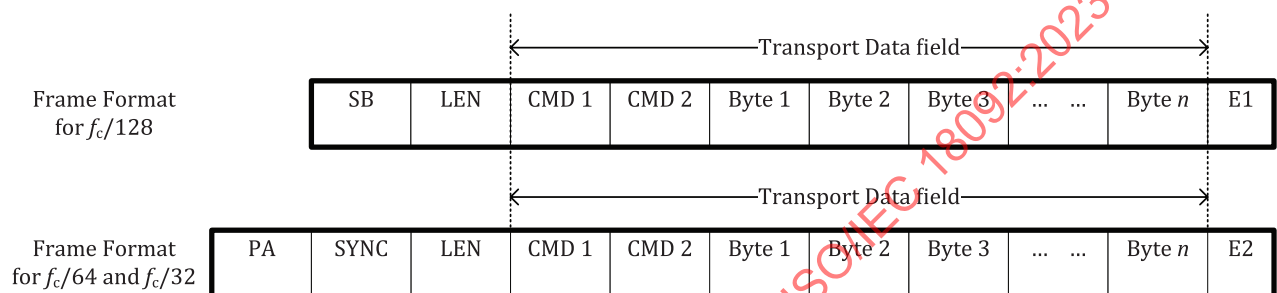


Figure 12 — Transport Data Frame format

12.3 Passive communication mode Activation flow

The following activation sequence shall be applied:

- The Initiator shall perform the initial RFCA sequence as defined in [11.2.2](#).
- The Initiator shall perform the Initialisation and SDD for the Passive communication mode at a selected bit rate as defined in [11.2](#).
- The support of the NFCIP-1 protocol shall be checked at the different bit rates according to the result of the SDD.
- The Target may fall back to the Initialisation and SDD if no ATR_REQ is supported.
- The ATR_REQ may be sent by the Initiator as a next command if the Target indicates that the Attribute Request is supported.
- The Target shall send its ATR_RES as answer to the ATR_REQ. The Target shall only answer to the ATR_REQ if the ATR_REQ is received directly after selection.
- If the Target supports any changeable parameter in the ATR_REQ, a PSL_REQ may be used by the Initiator as the next command after receiving the ATR_REQ to change parameters.
- The Target shall send a PSL_RES as answer to the PSL_REQ.
- A Target does not need to complement the Parameter Selection, if it does not support any changeable parameters in the ATR_RES.
- The transparent data shall be sent using the data exchange transport protocol.

The Initiator activation sequence for a Target in the Passive communication mode is shown in [Figure 13](#).

12.4 Active communication mode Activation flow

The following activation sequence for the protocol in the active communication mode shall be applied:

- a) The Initiator shall perform the initial RFCA sequence as defined in [11.2.2](#).
- b) The Initiator shall switch to the active communication mode and select the bit rate.
- c) The Initiator shall send the ATR_REQ.
- d) The Target shall send its ATR_RES in response to the ATR_REQ. After a successful response the device is selected.
- e) If the Initiator detects a collision of data the ATR_REQ shall be re-sent.
- f) If the Target supports any changeable parameter in the ATR_RES, a PSL_REQ may be used by the Initiator as the next command after receiving the ATR_RES to change parameters.
- g) The Target shall send a PSL_RES in response to the PSL_REQ.
- h) A Target does not need to complement the Parameter Selection, if it does not support any changeable parameters in the ATR_RES.

The Initiator activation sequence for a Target in the active communication mode is shown in [Figure 14](#).

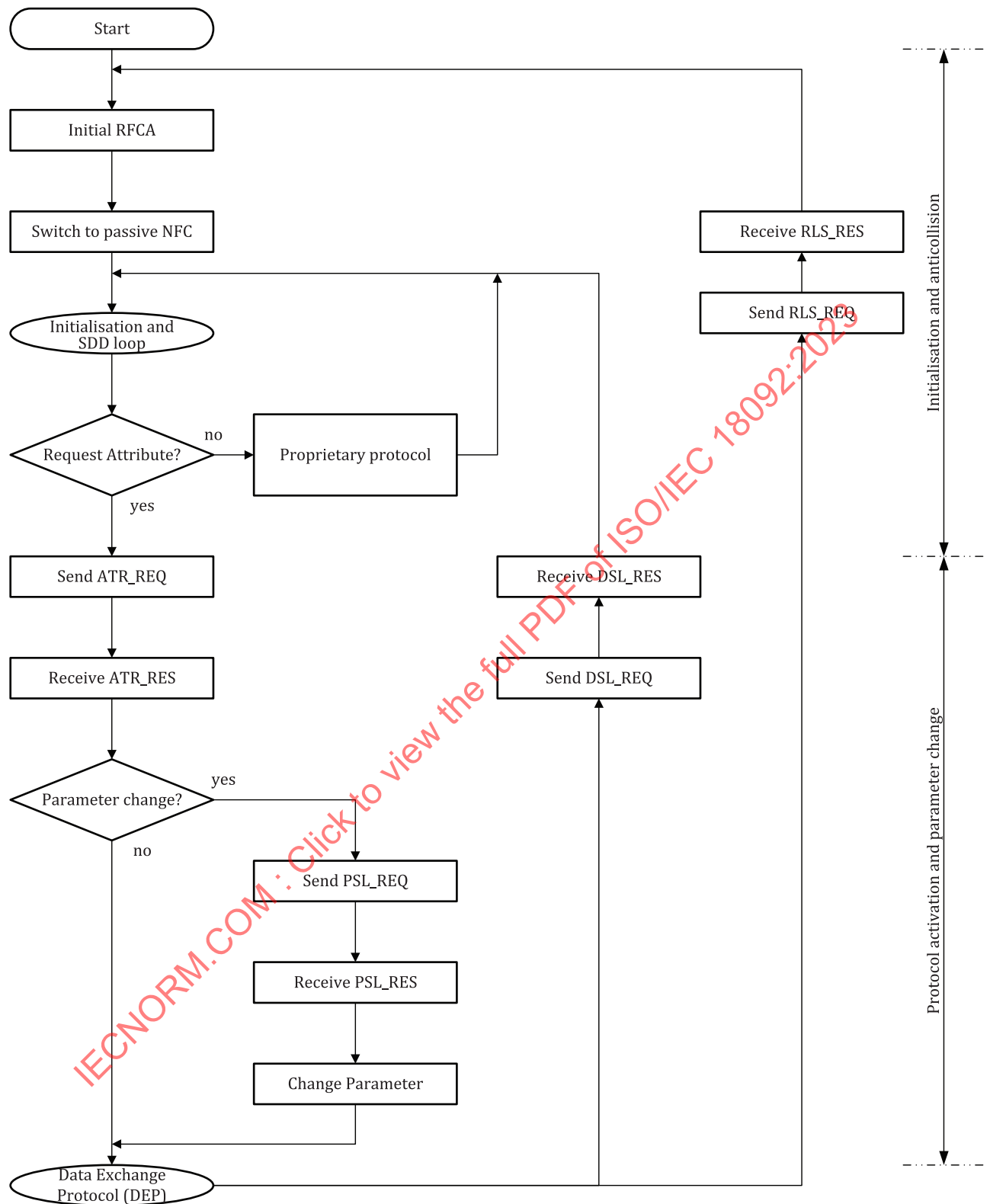


Figure 13 — Activation Protocol in Passive communication mode

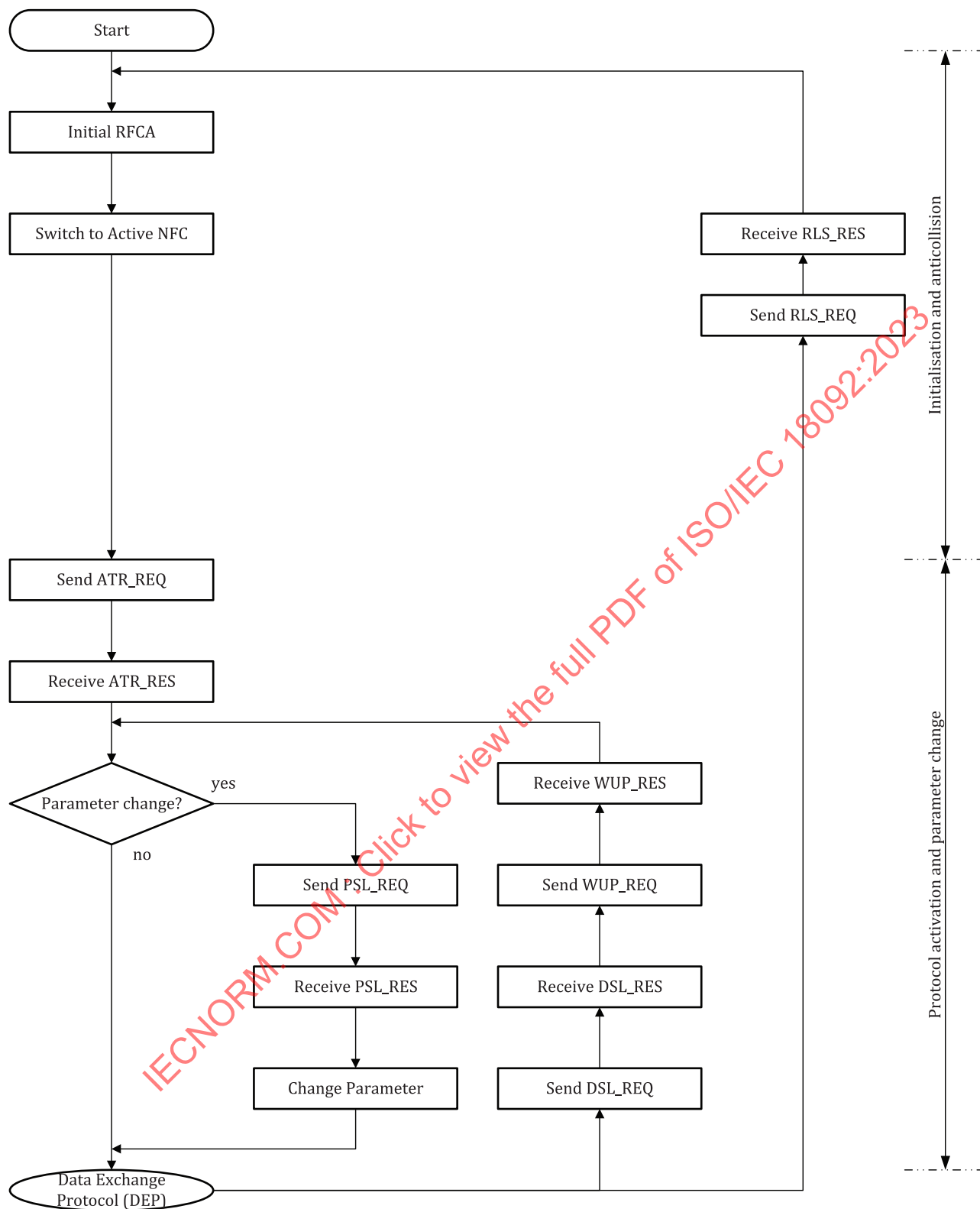


Figure 14 — Activation Protocol in Active communication mode

12.5 Commands

The Command bytes consist of CMD1 and CMD2 as specified in [Table 4](#).

Table 4 — NFCIP-1 Protocol Command Set

Mnemonic	Command bytes		Definition
	CMD1	CMD2	
ATR_REQ	'D4'	'00'	Attribute Request (sent by Initiator)
ATR_RES	'D5'	'01'	Attribute Response (sent by Target)
WUP_REQ	'D4'	'02'	Wakeup Request (sent by Initiator in active communication mode only)
WUP_RES	'D5'	'03'	Wakeup Response (sent by Target in active communication mode only)
PSL_REQ	'D4'	'04'	Parameter Selection Request (sent by Initiator)
PSL_RES	'D5'	'05'	Parameter Selection Response (sent by Target)
DEP_REQ	'D4'	'06'	Data Exchange Protocol Request (sent by Initiator)
DEP_RES	'D5'	'07'	Data Exchange Protocol Response (sent by Target)
DSL_REQ	'D4'	'08'	Deselect Request (sent by Initiator)
DSL_RES	'D5'	'09'	Deselect Response (sent by Target)
RLS_REQ	'D4'	'0A'	Release Request (sent by Initiator)
RLS_RES	'D5'	'0B'	Release Response (sent by Target)

12.6 Activation of the protocol

12.6.1 Attribute Request and Response Commands

12.6.1.1 Attribute Request (ATR_REQ)

This clause defines the Attribute Request ATR_REQ with all its parameter bytes, see [Figure 15](#). The Initiator shall send the ATR_REQ to the selected Target.

CMD 1	CMD 2	Byte 1	...	Byte 10	Byte 11	Byte 12	Byte 13	Byte 14	Byte 15	...	Byte n
'D4'	'00'	nfcid3i1	...	nfcid3i10	DIDi	BSi	BRi	PPi	[Gi[1]]	...	[Gi[n]]

Figure 15 — Structure of the ATR_REQ

12.6.1.1.1 Definition of the ATR_REQ bytes

CMD 1: Shall be set to 'D4'.

CMD 2: ATR_REQ

The ATR_REQ byte shall specify the Attribute Request for the Initiator. The value of ATR_REQ shall be set to '00'.

Byte 1 to Byte 10: NFCID3i

The 10 nfcid3i bytes define the random identifier NFCID3i of the Initiator. NFCID3 shall be an ID dynamically generated by the application and be fixed during one communication. For Passive communication mode $f_c/64$ and $f_c/32$, the NFCID3i shall be replaced by NFCID2t.

Byte 11: DIDi

The DID byte shall be used for multiple data transport protocol activation with more than one Target. The range of the DIDi shall be defined between 1 and 14. The value ZERO shall be used if no DIDi is used during the data transport protocol. All other values shall not be used.

Byte 12: BSi

The Initiator device shall specify its supported send-bit rates (D) in the BSi byte, see [Figure 16](#).

bit 8	bit 7	bit 6	bit 5	bit 4	bit 3	bit 2	bit 1
ZERO	ZERO	ZERO	ZERO	DSi4	DSi3	DSi2	DSi1

Figure 16 — Coding of the BSi byte

The coding of bits is as follows:

- bit 8 to bit 5: shall be set to ZERO, all other values are RFU;
- bit 4: if DSi4 = ONE then D = 64 is supported;
- bit 3: if DSi3 = ONE then D = 32 is supported;
- bit 2: if DSi2 = ONE then D = 16 is supported;
- bit 1: if DSi1 = ONE then D = 8 is supported.

Byte 13: BRi

The Initiator device shall specify its supported bit rates (see [Table 1](#)) in the BRi byte, see [Figure 17](#). The coding of bits is as follows:

bit 8	bit 7	bit 6	bit 5	bit 4	bit 3	bit 2	bit 1
ZERO	ZERO	ZERO	ZERO	DRi4	DRi3	DRi2	DRi1

Figure 17 — Coding of the BRi byte

- bit 8 to bit 5: shall be set to ZERO, all other values are RFU;
- bit 4: if DRi4 = ONE then D = 64 is supported;
- bit 3: if DRi3 = ONE then D = 32 is supported;
- bit 2: if DRi2 = ONE then D = 16 is supported;
- bit 1: if DRi1 = ONE then D = 8 is supported.

Byte 14: PPi

The PPi byte specifies optional parameters used by Initiator device, see [Figure 18](#). The coding of bits shall be as follows:

bit 8	bit 7	bit 6	bit 5	bit 4	bit 3	bit 2	bit 1
SECi	RFU	LRi		RFU	RFU	Gi	NAD

Figure 18 — Coding of the PPi byte

- bit 8: SECi. If set to ONE the Initiator supports NFC-SEC; ZERO indicates no support.
- bit 7: RFU. The Initiator shall set it to ZERO. The Target shall ignore it.
- bit 6 and bit 5: LRi. Length Reduction value, see [Table 5](#).

Table 5 — Definition of LRI

LRI	LEN _{MAX}
00	Only Byte 1 to Byte 64 is valid in the Transport Data
01	Only Byte 1 to Byte 128 is valid in the Transport Data
10	Only Byte 1 to Byte 192 is valid in the Transport Data
11	Only Byte 1 to Byte 252 is valid in the Transport Data

- bit 4 and bit 3: RFU. The Initiator shall set it to ZERO. The Target shall ignore it.
- bit 2: If bit is set to ONE then it indicates General bytes are available.
- bit 1: If bit is set to ONE then it indicates the Initiator uses NAD.

Byte 15 to Byte n : Gi^[1] to Gi $[n]$

The general bytes shall be optional and designate general information. The maximum length of the ATR_REQ subtracted by the mandatory bytes give the maximum number of general bytes.

12.6.1.2 Attribute Response (ATR_RES)

The ATR_RES, see [Figure 19](#) shall be the response to the ATR_REQ and shall be sent by the selected NFCIP-1 Target device.

CMD 1	CMD 2	Byte 1	...	Byte 10	Byte 11	Byte 12	Byte 13	Byte 14	Byte 15	Byte 16	...	Byte n
'D5'	'01'	nfcid3t1	...	nfcid3t10	DIDt	BSt	BRt	TO	Ppt	[Gi[1]]	...	[Gi $[n]$]

Figure 19 — Structures of the ATR_RES**12.6.1.2.1 Definition of the ATR_RES bytes**

CMD 1: Shall be set to 'D5'.

CMD 2: ATR_RES

The ATR_RES byte shall specify the Target's Response to the ATR_REQ send by the Initiator. The value of CMD1 for ATR_RES shall be set to '01'.

Byte 1 to Byte 10: NFCID3t

The 10 nfcid3t bytes define the random identifier NCID3t of the Target. NFCID3 should be an ID generated by the application. The content of NFCID3 may be the same as UID or NFCID2.

Byte 11: DIDt

The DID byte shall be used for multiple data transport protocol activation with more than one Target. The DIDt shall have the same value as the DIDi. All other values shall not be used. For usage of DIDt, see [12.7.5](#).

Byte 12: BSt

The BSt byte shall specify the supported bit rates of the Target device, see [Figure 20](#). The coding of bits is defined as follows:

bit 8	bit 7	bit 6	bit 5	bit 4	bit 3	bit 2	bit 1
ZERO	ZERO	ZERO	ZERO	DSt4	DSt3	DSt2	DSt1

Figure 20 — Coding of the BSt byte

- bit 8 to bit 5: Shall be set to ZERO.
- bit 4: if DSt4 = ONE then D = 64 is supported.
- bit 3: if DSt3 = ONE then D = 32 is supported.
- bit 2: if DSt2 = ONE then D = 16 is supported.
- bit 1: if DSt1 = ONE then D = 8 is supported.

Byte 13: BRt

The BRt byte shall specify the supported receive bit rates of the Target device, see [Figure 21](#). The coding of bits is defined as follows:

bit 8	bit 7	bit 6	bit 5	bit 4	bit 3	bit 2	bit 1
ZERO	ZERO	ZERO	ZERO	DRt4	DRt3	DRt2	DRt1

Figure 21 — Coding of the BRt byte

- bit 8 to bit 5: Shall be set to ZERO.
- bit 4: if DRt4 = ONE then D = 64 is supported.
- bit 3: if DRt3 = ONE then D = 32 is supported.
- bit 2: if DRt2 = ONE then D = 16 is supported.
- bit 1: if DRt1 = ONE then D = 8 is supported.

Byte 14: TO

The TO byte shall specify the timeout value of the Target NFCIP-1 device for the data transport protocol, see [Figure 22](#).

The timeout calculation for $f_c/128$ shall start with the start of the rising edge of the last modulation sent by the Initiator and stop with the start of the modulation edge of the first modulation sent by the Target.

The timeout calculation for $f_c/64$ and $f_c/32$ shall start with the end of the last bit of a frame sent by the Initiator and stop with the start of the first bit of the Length field in a frame sent by the Target.

NOTE The definition of timeout calculation is harmonized with the NFC-DEP Protocol defined by NFC Forum.

The timeout is specified as follows:

bit 8	bit 7	bit 6	bit 5	bit 4	bit 3	bit 2	bit 1
ZERO	ZERO	ZERO	ZERO	WT			

Figure 22 — Coding of the TO byte

- bit 8 to bit 5: Shall be set to all ZEROs.
- bit 4 to bit 1: WT: Waiting Time.

The Response Waiting Time (t_{RW}) shall be calculated by the following formula:

$$t_{RW} = (256 \times 16 / f_c) \times 2^{WT}$$

where

the value of WT shall be range from 0 to 14;

the value of 15 is RFU;

The default value of WT shall be 14;

for WT = 0 $t_{RW} = t_{RW,MIN}$ (302 μ s);

for WT = 14 $t_{RW} = t_{RW,MAX}$ (4 949 ms).

Byte 15: PPt

The PPt byte specifies optional parameters used by Target device, see [Figure 23](#). The coding of bits shall be as follows:

bit 8	bit 7	bit 6	bit 5	bit 4	bit 3	bit 2	bit 1
SECT	ZERO	LRt		ZERO	ZERO	Gt	NAD

Figure 23 — Coding of the PPt byte

- bit 8: SECT. If set to ONE, the Target supports NFC-SEC; ZERO indicates no support.
- bit 7: Shall be set to ZERO.
- bit 6 and bit 5: LRt. Length Reduction value, see [Table 6](#).

Table 6 — Definition of LRt

LRt	LEN _{MAX}
00	Only Byte 1 to Byte 64 is valid in the Transport Data
01	Only Byte 1 to Byte 128 is valid in the Transport Data
10	Only Byte 1 to Byte 192 is valid in the Transport Data
11	Only Byte 1 to Byte 252 is valid in the Transport Data

- bit 4 and bit 3: Shall be set to ZERO.
- bit 2: If bit is set to ONE then it indicates General bytes available.
- bit 1: If bit is set to ONE then it indicates the Target uses NAD.

Byte 15 to Byte *n*: Gt[1] to Gt[*n*]

The Gt bytes shall be optional and designate general information. The maximum length of the ATR_RES subtracted by the mandatory bytes gives the maximum number of general bytes.

12.6.1.3 Handling of ATR_REQ and ATR_RES

12.6.1.3.1 Initiator rules

When the Initiator has sent the ATR_REQ and receives a valid ATR_RES the Initiator shall continue with operation.

In any other case the Initiator shall retransmit the ATR_REQ before using the deactivation sequence as defined in [12.7](#).

In case of failure of the deactivation sequence it may use the HLTA command only for Passive communication mode at $f_c/128$. The HLTA command is specified in ISO/IEC 14443-3:2018, 6.4.3.

12.6.1.3.2 Target rules

When the Target has been selected by the last command (for passive communication mode only) and

- a) Receives a valid ATR_REQ, the Target
 - shall send its ATR_RES, and
 - shall disable to receive a subsequent ATR_REQ.
- b) Receives any other valid or invalid frame, except a HLTA command (see [12.6.1.3.1](#)) only for Passive communication mode at $f_c/128$, the Target
 - ignores the block, and
 - remains in receive mode.

12.6.1.4 Handling of timeout (TO)

12.6.1.4.1 General

Defined by the initially chosen mode, the communication is either active or passive. The handling of the timeout is different for active and passive communication modes.

12.6.1.4.2 Handling in active communication mode

In active communication mode the communication flow is handled by switching the carrier frequency.

Initiator: The Initiator shall ignore a Target that exceeded t_{RW} calculated using TO byte in ATR_REQ from a Target device and continue operation.

Target: The Target shall use a TO value that allows common communication and shall use a Supervisory pdu indicating Timeout extension to extend the defined t_{RW} . See [12.7.1.1.1](#).

12.6.1.4.3 Handling of timeout in passive communication mode

In passive communication mode the communication is only handled by communication flow. The carrier frequency is not switched.

Initiator: The Initiator shall first use error handling and if no response is received ignores a Target device, that has exceeded the specified timeout and continue communication.

Target: The Target shall use a TO value that allows common communication and shall use a Supervisory pdu indicating Timeout extension to extend the defined t_{RW} . See [12.7.1.1.1](#).

12.6.1.5 Handling of DID

12.6.1.5.1 Handling of DID in active and in passive communication mode

When the Initiator has sent an ATR_REQ containing a DID equal to ZERO and

- a) received an ATR_RES containing DID equal to ZERO, the Initiator
 - shall send pdus containing no DID to the Target, and
 - shall not activate any other Target while this Target is not deactivated.

- b) received an ATR_RES containing DID not equal to ZERO, the Initiator
- shall continue with error handling.

When the Initiator has sent an ATR_REQ containing a DID not equal to ZERO and

- a) received an ATR_RES containing the same DID, the Initiator
- shall send pdus containing the DID to the Target,
 - shall not use the DID for any other Targets, and
 - shall not use DID=0 for any other Targets.
- b) received an ATR_RES containing any other DID, the Initiator
- shall continue with error handling.

12.6.2 Wakeup Request and Response Commands

12.6.2.1 General

The Wakeup Request and Response commands are only defined for the active communication mode.

12.6.2.2 Wakeup Request (WUP_REQ)

12.6.2.2.1 General

Figure 24 specifies the Wakeup Request for Attributes WUP_REQ with its parameter bytes. The Initiator sends the WUP_REQ to the Target only in the active communication mode. It shall be applied to reactivate a distinct Target device by its NFCID3, which was deactivated by the DSL command.

CMD 1	CMD 2	Byte 1	...	Byte 10	Byte 11
'D4'	'02'	nfcid3t1	...	nfcid3t10	DID

Figure 24 — Structure of the WUP_REQ

12.6.2.2.2 Definition of the WUP_REQ bytes

CMD 1: Shall be set to 'D4'.

CMD 2: WUP_REQ

The WUP_REQ byte shall specify the command Wake Up for the Initiator device. The value of WUP_REQ shall be '02'.

Byte 1 to Byte 10: NFCID3t

The 10 nfcid3t bytes shall be defined as the random identifier of the Target. For the WUP_REQ command the Initiator shall send the known NFCID3t random identifier to wake up the Target.

Byte 11: DID

The DID byte shall be used for multiple data transport protocol activation with more than one Targets. The range of the DID shall be defined between 1 and 14. The value 0 shall be used, if no DID is used during the data transport protocol. All other values shall not be used. The Initiator may assign a different value to the Target, as used before the last DSL command.

12.6.2.3 Wakeup Response (WUP_RES)

12.6.2.3.1 General

[Figure 25](#) specifies the structure of the Wakeup Response for attributes WUP_RES. The WUP_RES shall be the response to the WUP_REQ and shall be sent by the selected NFCIP-1 Target device.

CMD 1	CMD 2	Byte 1
'D5'	'03'	DID

Figure 25 — Structure of the WUP_RES

12.6.2.3.2 Definition of the WUP_RES bytes

CMD 1: Shall be set to 'D5'.

CMD 2: WUP_RES

The WUP_RES byte shall specify the response to the WUP_REQ. The value of WUP_RES shall be (03).

Byte 1: DID

The DID byte shall be used for multiple data exchange protocol activation with more than one Targets. The DIDt shall have the same value as the DIDi. All other values shall not be used.

12.6.2.4 Handling of WUP_REQ and WUP_RES

12.6.2.4.1 Initiator rules

When the Initiator has sent a WUP_REQ and receives a valid WUP_RES the Initiator shall continue with operation.

In any other case the Initiator shall retransmit the WUP_REQ before using the deactivation sequence as defined in [12.7](#).

In case of failure of the deactivation sequence in Passive communication mode at $f_c/128$, it may use the HLTA command (see ISO/IEC 14443-3:2018, 6.4.3).

12.6.2.4.2 Target rules

When the Target has been de-selected by the last command (for the active communication mode only) and

- a) receives a WUP_REQ with its NFCID3, the Target
 - shall send its WUP_RES, and
 - shall disable in order to not receive a subsequent WUP_REQ.
- b) receives any other valid or invalid frame, except a HLTA command only for passive communication mode at $f_c/128$, the Target
 - ignores the block, and
 - remains in receive mode.

12.6.3 Parameter Selection Request and Response Commands

12.6.3.1 Parameter Selection Request (PSL_REQ)

12.6.3.1.1 General

The Initiator may switch parameters for the subsequent transport protocol using the PSL_REQ command, see [Figure 26](#).

CMD 1	CMD 2	Byte 1	Byte 2	Byte 3
'D4'	'04'	DID	BRS	FSL

Figure 26 — Structure of the PSL_REQ

12.6.3.1.2 Definition of the PSL_REQ bytes

CMD 1: Shall be set to 'D4'.

CMD 2: PSL_REQ

The PSL_REQ byte shall specify the command Parameter Selection for the Initiator device. The value of PSL_REQ shall be '04'.

Byte 1: DID

The DID shall be similar to the DID defined during ATR or WUP.

Byte 2: BRS

The BRS byte (see [Figure 27](#)) shall specify the selected bit rates for Initiator and Target device.

bit 8	bit 7	bit 6	bit 5	bit 4	bit 3	bit 2	bit 1
ZERO	ZERO	DSI			DRI		

Figure 27 — Coding of the BRS byte

- bit 8 and bit 7: Shall be set to ZERO.
- bit 6 to bit 4: Bit duration of Initiator to Target, see [Table 7](#).
- bit 3 to bit 1: Bit duration of Target to Initiator, see [Table 7](#).

Table 7 — Coding of DRI and DSI

DRI and DSI	Divisor D
000	1
001	2
010	4
011	8
100	16
101	32
110	64
111	RFU

Byte 3: FSL

The FSL byte defines the maximum value for the Frame Length, see [Figure 28](#).

bit 8	bit 7	bit 6	bit 5	bit 4	bit 3	bit 2	bit 1
ZERO	ZERO	ZERO	ZERO	ZERO	ZERO	LR	

Figure 28 — Coding of FSL bytes

- bit 8 to bit 3: Shall be set to all ZERO.
- bit 2 and bit 1: Length Reduction (LR) value, see [Table 8](#).

Table 8 — Definition of LR

LR	LEN _{MAX}
00	Only Byte 1 to Byte 64 is valid in the Transport Data
01	Only Byte 1 to Byte 128 is valid in the Transport Data
10	Only Byte 1 to Byte 192 is valid in the Transport Data
11	Only Byte 1 to Byte 252 is valid in the Transport Data

12.6.3.2 Parameter Selection Response (PSL_RES)**12.6.3.2.1 General**

[Figure 29](#) specifies the frame Structure of PSL_RES.

CMD 1	CMD 2	Byte 1
'D5'	'05'	DID

Figure 29 — Structure of PSL_RES**12.6.3.2.2 Definition of the PSL_RES bytes**

CMD1: Shall be set to 'D5'.

CMD2: PSL_RES

The PSL_RES byte shall specify the command Parameter Selection response for the Target device. The value of PSL_RES shall be '05'.

Byte 1: DID

The DID shall be the same as the DID defined during ATR or WUP.

12.6.3.3 Handling of PSL_REQ and PSL_RES**12.6.3.3.1 Initiator rules**

The Initiator may change protocol parameters by sending the PSL_REQ to the Target. After reception of a valid PSL_RES, the Initiator

- shall change the framing to the format which is defined in [12.2](#), and

— shall continue with operation.

In any other case the Initiator may retransmit the PSL_REQ before using the deactivation sequence as defined in [12.7](#).

In case of failure of deactivation sequence in Passive communication mode at $f_c/128$, it may use the HLTA command (see [12.6.1.3.1](#)).

12.6.3.3.2 Target rules

When the Target has received an ATR_REQ, sent its ATR_RES and

- a) receives a valid PSL_REQ, the Target
 - shall send its PSL_RES,
 - shall disable the PSL_REQ (stop responding to received PSL_REQ),
 - shall change all parameters to the defined values, which are specified in [12.6.3](#), and
 - shall remain in receive mode.
- b) receives an invalid frame, the Target
 - shall ignore the block,
 - shall disable the PSL_REQ (stop responding to received PSL_REQ),
 - shall remain with the current framing, and
 - shall remain in receive mode.
- c) receives a valid frame, except a PSL_REQ, the Target
 - shall disable the PSL_REQ (stop responding to received PSL_REQ),
 - shall remain with the current framing, and
 - shall continue operation.

12.7 Data Exchange Protocol

12.7.1 Data Exchange Protocol Request and Response

12.7.1.1 Data Exchange Protocol Request (DEP_REQ) and Response (DEP_RES)

12.7.1.1.1 General

The protocol shall be half-duplex protocol supporting block-oriented data transmission with error handling. For data which does not fit in one frame, a chaining mechanism is defined. The format of the protocol frame as specified in [Figure 30](#) shall be used.

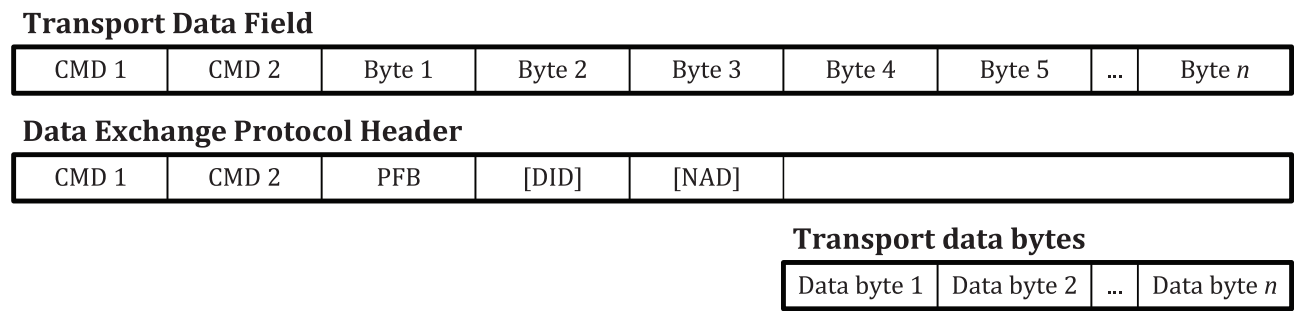


Figure 30 — Definition of the protocol frames

In information interchange, the content of the payload of the Transport Data Field requires agreement between the interchanging parties.

12.7.1.1.2 Definition of the Data Exchange Protocol Header bytes

CMD 1:

If the CMD2 is DEP_REQ then the CMD1 shall be set to 'D4'.

If the CMD2 is DEP_RES then the CMD1 shall be set to 'D5'.

CMD 2: DEP_REQ

The DEP_REQ bytes specify the command for the data exchange protocol for the Initiator device. The value of the DEP_REQ shall be '06'.

CMD 2: DEP_RES

The DEP_RES bytes specify the command for data exchange for the Target device. The value of the DEP_RES shall be '07'.

Byte 1: PFB

The PFB byte shall contain bits to control the data transmission and error recovery. The PFB byte is used to convey the information required controlling the transmission. The data exchange protocol defines these fundamental types of pdus:

- Information pdus to convey information for the application layer.
- ACK/NACK pdus to convey positive or negative acknowledgements. An ACK / NACK pdu never contains a data field. The acknowledgement relates to the last received block.
- Protected pdus to convey data which shall be in accordance with ISO/IEC 13157-1.
- Supervisory pdus to exchange control information between the Initiator and the Target. Two types of supervisory pdus are defined:
 - timeout extension containing a 1-byte data field;
 - attention containing no data field.

Table 9 specifies the coding of PFB.

Table 9 — Coding of the PFB bits 8 to 6

bit 8	bit 7	bit 6	PFB
0	0	0	Information pdu
0	0	1	Protected pdu
0	1	0	ACK/NACK pdu
1	0	0	Supervisory pdu
Other settings are RFU			

[Figure 31](#) specifies the structure of the Information pdu:

bit 8	bit 7	bit 6	bit 5	bit 4	bit 3	bit 2	bit 1
ZERO	ZERO	ZERO	MI	NAD	DID	PNI	

Figure 31 — Information pdu

- bit 8 to bit 6: Shall be set to all ZEROs.
- bit 5: If bit set to ONE then it indicates Multiple Information (MI) chaining activated.
- bit 4: If bit set to ONE then it indicates NAD available.
- bit 3: If bit set to ONE then it indicates DID available.
- bit 2 and bit 1: PNI packet number information.

The Packet Number Information (PNI) counts the number of packets sent by the Initiator to the Target and vice versa starting by 0. These bytes are used for error detection during the protocol handling.

[Figure 32](#) specifies the structure of the ACK/NACK pdu.

bit 8	bit 7	bit 6	bit 5	bit 4	bit 3	bit 2	bit 1
ZERO	ONE	ZERO	ACK/ NACK	NAD	DID	PNI	

Figure 32 — ACK/NACK pdu

- bit 8: Shall be set to ZERO.
- bit 7: Shall be set to ONE.
- bit 6: Shall be set to ZERO.
- bit 5: If bit set to ONE then it indicates NACK, otherwise ACK.
- bit 4: If bit set to ONE then it indicates NAD available.
- bit 3: If bit set to ONE then it indicates DID available.
- bit 2 and bit 1: PNI packet number

[Figure 33](#) specifies the Supervisory pdu (Attention-Target Present, Timeout extension).

bit 8	bit 7	bit 6	bit 5	bit 4	bit 3	bit 2	bit 1
ONE	ZERO	ZERO	Attention/ Timeout	NAD	DID	ZERO	ZERO

Figure 33 — Supervisory pdu

- bit 8: Shall be set to ONE.
- bit 7 and bit 6: shall be set to ZERO.
- bit 5: If bit set to ZERO then it indicates Attention (see [12.7.3](#)), otherwise Timeout extension (see [12.7.2](#)).
- bit 4: If bit set to ONE then it indicates NAD available.
- bit 3: If bit set to ONE then it indicates DID available.
- bit 2 and bit 1: Shall be set to ZERO.

[Figure 34](#) specifies the Protected pdu.

bit 8	bit 7	bit 6	bit 5	bit 4	bit 3	bit 2	bit 1
RFU	RFU	ONE	MI	NAD	DID	PNI	

Figure 34 — Protected pdu

- bit 8 and bit 7: RFU. The Initiator shall set it to ZERO. The Target shall ignore it.
- bit 6: shall be set to ONE.
- bit 5: If bit set to ONE then it indicates Multiple Information (MI) chaining activated.
- bit 4: If bit set to ONE then it indicates NAD available.
- bit 3: If bit set to ONE then it indicates DID available.
- bit 2 and bit 1: PNI packet number information.

The PNI counts the number of packets sent by the Initiator to the Target and vice versa starting by 0. These bytes are used for error detection during the protocol handling.

Byte 2: DID

The DID byte shall be the same as defined during activation of the protocol.

Byte 3: NAD

The NAD byte is reserved to build up and address different logical connections on both the Initiator and the Target device. Bit 8 to bit 5 code the logical address of the Initiator, bits 4 to 1 code the logical address of the Target. The following definitions shall apply for the usage of the NAD:

- The NAD shall only be used for the data exchange protocol.
- When the Initiator uses an NAD, the Target shall also use an NAD.
- If MI bit is set, the NAD shall only be transmitted in the first frame.
- The Initiator shall never use the NAD to address two different Targets.

Byte 4 to Byte *n*: User data bytes

The data field shall contain the transported data and is optional. When present, it conveys either application data or status information. The length of the data field is calculated by subtracting the mandatory and optional send bytes of the data exchange transport header from the length byte and additionally subtracting one.

12.7.1.2 Handling of pdu number information

12.7.1.2.1 Initiator rules

The PNI of the Initiator shall be initialized for each Target with all ZEROs.

When an Information, Protected or ACK/NACK pdu with an equal PNI is received, the Initiator shall increment the current PNI for that Target before optionally sending a new frame.

12.7.1.2.2 Target rules

The PNI of the Target shall be initialized with all ZEROs.

When an Information, Protected or ACK/NACK pdu with an equal PNI was received the Target shall send its response with this PNI and shall increment the PNI afterwards.

12.7.1.3 Handling of Blocks

12.7.1.3.1 General rules

The first pdu shall be sent by the Initiator.

When an Information or Protected pdu indicating more information is received the pdu shall be acknowledged by an ACK pdu.

Supervisory pdus are only used in pairs. A Supervisory Request shall always be followed by a Supervisory Response.

12.7.1.3.2 Initiator rules

When an invalid pdu was received a NACK pdu shall be sent (except in the case of DSL or RLS).

When a timeout occurs, a Supervisory pdu indicating Attention (Attention Request) shall be sent (except a NACK pdu has been sent before).

When a timeout occurs and a NACK pdu has been sent before, the NACK pdu shall be retransmitted.

When an ACK pdu is received, if its pdu number is equal to the current PNI of the Initiator, the chaining shall be continued.

If the DSL_REQ is not answered by a valid DSL_RES the DSL_REQ may be retransmitted or the Target command ignored.

12.7.1.3.3 Target rules

The Target is allowed to send a Supervisory pdu indicating Response timeout extension (Timeout extension Request) instead of an Information pdu.

When an Information or Protected pdu not containing chaining is received it shall be acknowledged by an Information or Protected pdu.

When a NACK pdu is received, if the PNI is equal to the PNI of the previous sent pdu, the previous block shall be re-transmitted.

When an erroneous pdu is received the Target shall not answer but stay in the same State.